

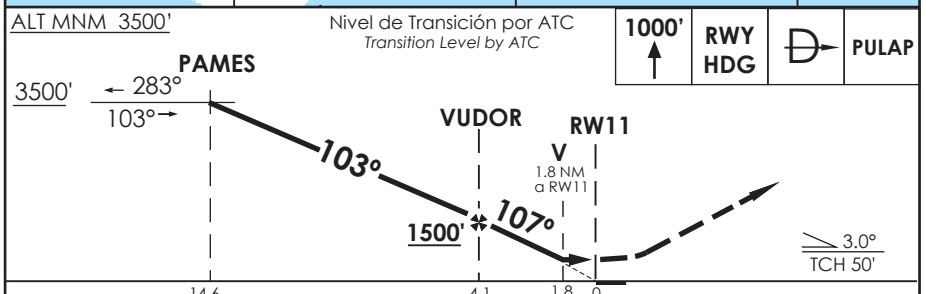
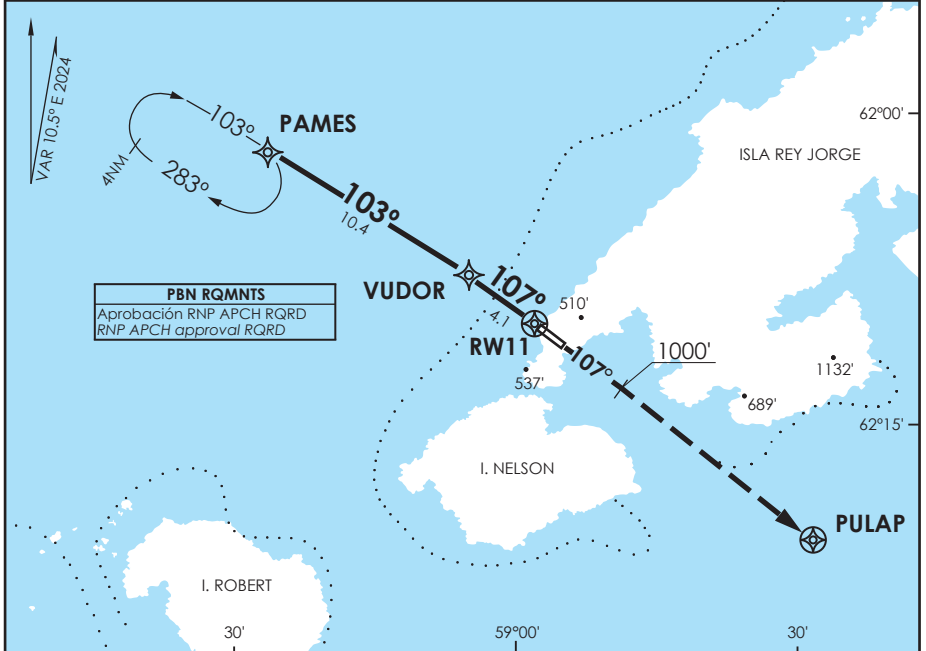
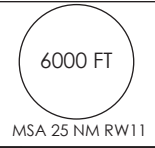
**ANTARTICA - CHILE**

**RNP Rwy 11(LNAV Only)**

APP MARSH Marsh Approach	119.7	TORRE MARSH Marsh Tower	118.1	CONTROL TERRESTRE Ground Control
<b>RNAV</b>	FINAL APCH CRS <b>107°</b>	MNM ALT VUDOR <b>1500'</b>	MDA(H) <b>760'(618')</b>	AD Elev. <b>147'</b> THR 11 Elev. <b>142'</b>

APCH FRUSTRADA: Ascenso 1000' en RWY HDG, luego directo PULAP.  
Ingreso HLDG 289 derecho o según autorización ATC.

Missed Apch: Climb to 1000' on RWY HDG, then direct to PULAP, enter on HLDG 289 right or according to ATC clearance.



CATEGORÍA	DIRECTO RWY 11 <i>Straight in RWY 11</i>		CIRCULANDO SUROESTE <i>Circling Southwest</i>	CIRCULANDO NORESTE <i>Circling Northeast</i>
	MDA <b>760' (618')</b>			
	A	1.6 Km	760' (613')	840' (693')
	B		860' (713')	860' (713')
C	2.8 Km	920' (773')	920' (773')	

Posibles témpanos en el área de aproximación, lecturas de Radioaltímetro pueden ser erráticas sobre hielo o nieve.  
Possible icebergs in the approach area, readings from Radioaltimeter can be erratic over ice or snow.

Veloc. Terrestre Kts	80	100	120	140	160
Angulo DES 3,0° FPM	425'	531'	637'	743'	849'
MAPt en RW11					

DASA / SECCION AFB-MAP

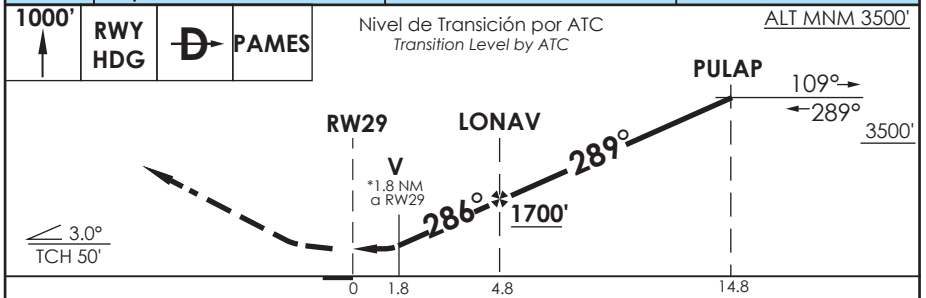
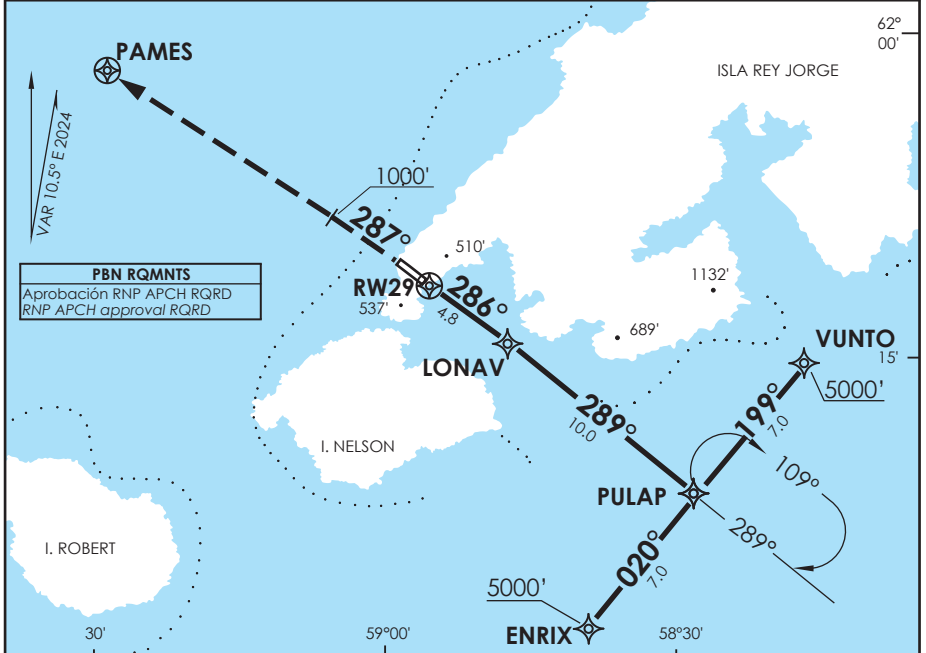
**ANTÁRTICA - CHILE**

**RNP Rwy 29 (LNAV Only)**

APP MARSH Marsh Approach	119.7	TORRE MARSH Marsh Tower	118.1	CONTROL TERRESTRE Ground Control
<b>RNAV</b>	FINAL APCH CRS <b>286°</b>	MNM ALT LONAV <b>1700'</b>	MDA <b>760' (633')</b>	AD Elev. THR 29 Elev. <b>147'</b> <b>127'</b>

APCH FRUSTRADA: Ascenso 1000' RWY HDG, luego directo PAMES, Ingrese HLDG 103 derecho o según autorización ATC.  
Missed Apch: Climb to 1000' on RWY HDG, then direct to PAMES, enter on HLDG 103 right or according to ATC clearance.

6000 FT  
MSA 25 NM RW29



CIRCULO DE APROXIMACIÓN	DIRECTO RWY 29 <i>Straight in RWY 29</i>	CIRCULANDO SUROESTE <i>Circling Southwest</i>	CIRCULANDO NORESTE <i>Circling Northeast</i>
	<b>MDA 760' (633')</b>		
A	1.6 Km	760' (613)	840' (693)
B		860' (713)	860' (713)
C	2.8 Km	920' (773)	920' (773)

Posibles témpanos en el área de aproximación, lecturas de Radioaltímetro pueden ser erráticas sobre hielo o nieve.  
Possible icebergs in the approach area, readings from Radioaltimeter can be erratic over ice or snow.

Veloc. Terrestre Kts	80	100	120	140	160
Angulo DES 3,0° FPM	425'	531'	637'	743'	849'
MAPt en RW29					