
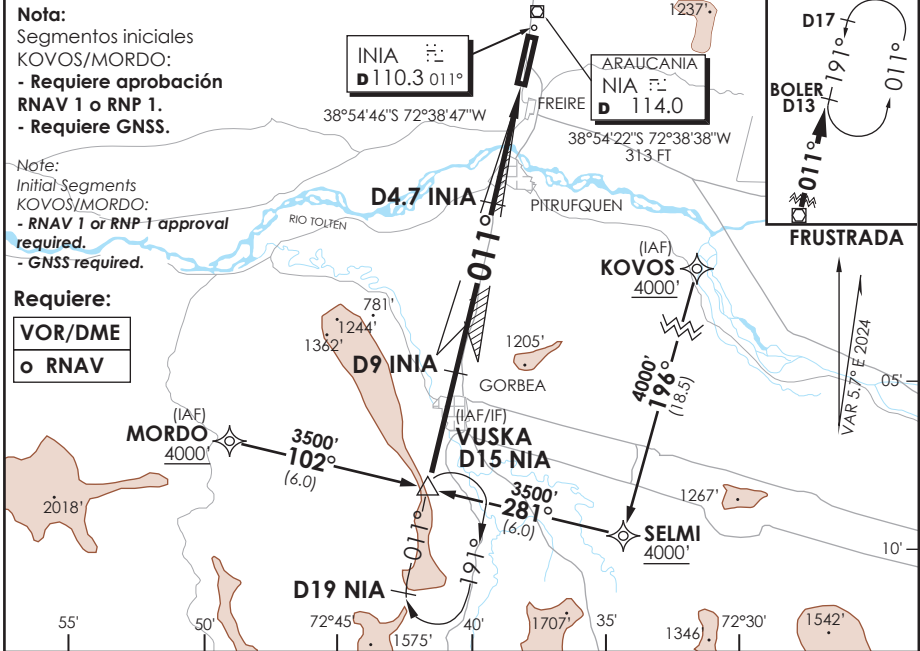


AD. LA ARAUCANIA FREIRE - CHILE

SCQP IAC 1
ILS Z Rwy 01

TEMUCO RADAR Temuco Radar	119.2/128.7	TORRE TEMUCO Temuco Tower	118.4	CONTROL TERRESTRE Ground Control	121.6
LOC INIA 110.3	FINAL APCH CRS 011°	MNM ALT D4.7 1800'	CAT II & IIA/B De acuerdo a CAT According to CAT	AD Elev 321' THR 01 Elev 321'	 MSA 25 NM NIA

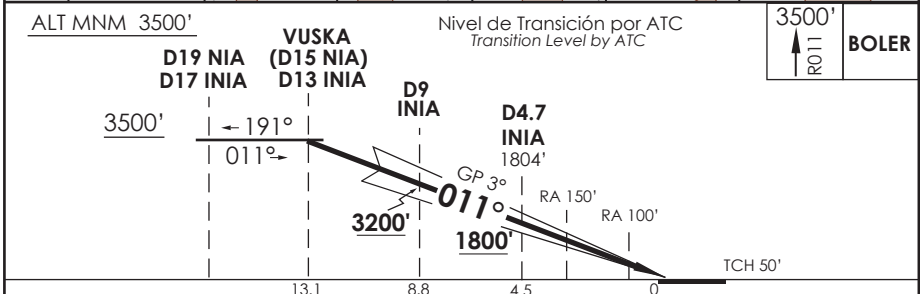
APCH FRUSTRADA: Ascenso a 3500' en R011 NIA directo BOLER D13 NIA, ingrese HLDG 191° izquierda o según autorización ATC.
 Missed Apch: Climb to 3500' on R011 NIA, direct to BOLER D13 NIA, enter HLDG 191° left or according to ATC clearance



Nota:
 Segmentos iniciales
 KOVOS/MORDO:
 - Requiere aprobación
 RNAV 1 o RNP 1.
 - Requiere GNSS.

Note:
 Initial Segments
 KOVOS/MORDO:
 - RNAV 1 or RNP 1 approval
 required.
 - GNSS required.

Requiere:
 VOR/DME
 o RNAV



CATEGORIA	** DIRECTO RWY 01 <i>Straight in RWY 01</i>				Aeronaves operando "FAIL PASSIVE" DA(H) 371' (50 FT) * Aircraft operating "FAIL PASSIVE" DA(H) 371' (50 FT)
	ILS CAT III-B *	ILS CAT III-A *	ILS CAT II		
			RA 100' DA 421'(100')	RA 150' DA 471'(150')	
	A				
B	RVR 150m	RVR 200m	RVR 350m	RVR 500m	MNM ALTN VER PAG GEN 2.19 ALTN MNM See pag 2.19
C					
D					


Se requiere certificación de ACFT y Habilitación de Tripulación Especial: DAN 06-02, 06-12
 Special Aircraft and aircrew certification required: DAN 06-02, 06-12

Veloc. Terrestre Kts	80	100	120	140	160	** WO INIA DME PROC NA
GP 3° FPM	425'	531'	637'	743'	849'	PROC not authorized without INIA DME

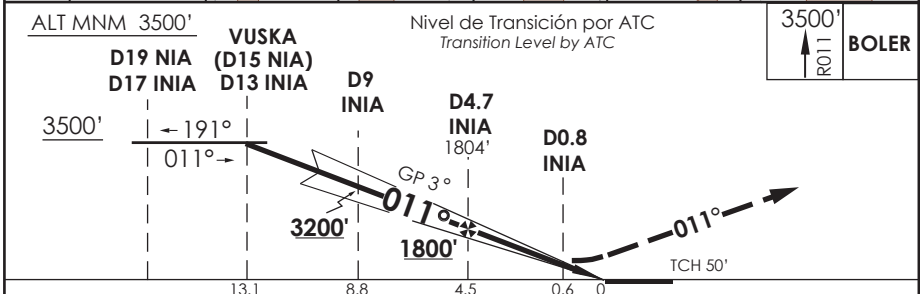
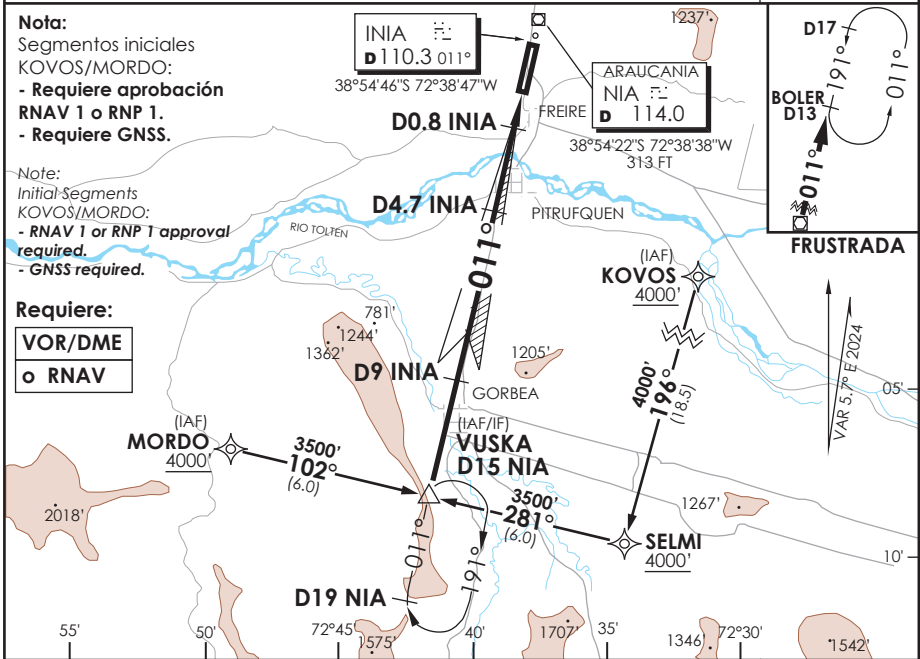
DASA / SECCION TAB-MAP

AD. LA ARAUCANIA FREIRE - CHILE

SCQP IAC 2
ILS Y o LOC Y Rwy 01

TEMUCO RADAR Temuco Radar	119.2 / 128.7	TORRE TEMUCO Temuco Tower	118.4	CONTROL TERRESTRE Ground Control	121.6
LOC INIA 110.3	FINAL APCH CRS 011°	MNM ALT D4.7 1800'	ILS DA (H) 560' (239')	AD Elev THR 01 Elev 321'	 <p>5000 FT MSA 25 NM NIA</p>

APCH FRUSTRADA: Ascenso a 3500' en R011 NIA directo BOLER D13 NIA, ingrese HLDG 191° izquierda o según autorización ATC.
 Missed Apch: Climb to 3500' on R011 NIA, direct to BOLER D13 NIA, enter HLDG 191° left or according to ATC clearance



A B C D	** DIRECTO RWY 01 Straight in RWY 01					CIRCULANDO Circling	ALTN Alternate Minimums
	DA 560' (239')			LOC MDA 700' (379')			
	TDZL y RCLL	WO TDZL o RCLL	WO ALSF-2	ALSF-2	WO ALSF-2		
RVR 550m	RVR 550m*	1.2 Km	1.2 Km	1.6 Km	760' (439')	VER PAG. GEN 2.19	
0.8 Km	RVR 750m		1.6 Km	2.0 Km	860' (539')		
	0.8 Km				960' (639')		

* Ver pagina GEN 2.11 See page GEN 2.11	** WO INIA DME PROC NA Procedure not authorized without INIA DME				
Veloc. Terrestre Kts	80	100	120	140	160
GP 3° FPM	425'	531'	637'	743'	849'
FAF to MAP± 3.9 NM	2:56	2:20	1:57	1:40	1:28

DASA / SECCION AS-MAP