

AD. CARRIEL SUR (INTL O/R)
CONCEPCION - CHILE

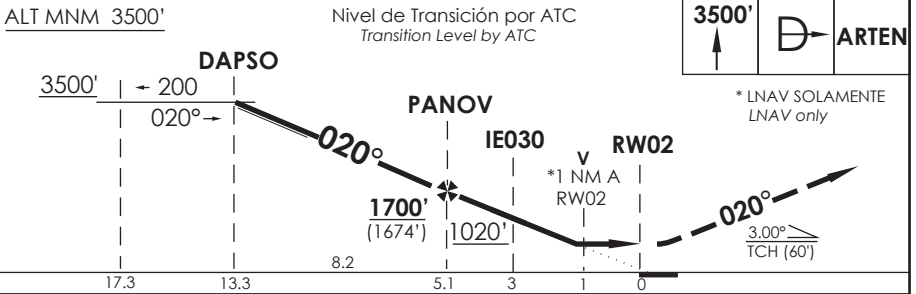
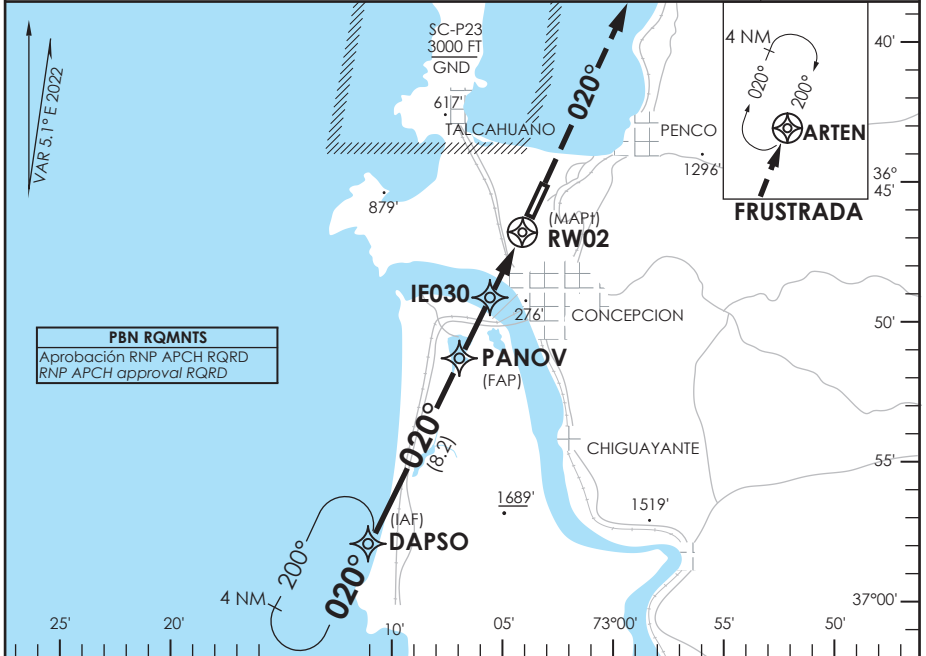
SCIE IAC 9
RNP Y RWY 02

CONCEPCION RADAR Concepción RADAR		125.8/129.35	TORRE CONCEPCION Concepción Tower		118.6	CONTROL TERRESTRE Ground Control		121.9
RNP	FINAL APCH CRS 020°	MNM ALT PANOV 1700' (1674')	LNNAV/VNAV DA(H) 330' (304')	AD Elev. 26'	THR 02 Elev. 26'			

APCH FRUSTRADA: Ascenso 3500' directo ARTEN, ingrese HLDG 200° derecha o según autorización ATC.

Missed Apch: Climb to 3500' direct to ARTEN, enter on HLDG 200° right or according to ATC clearance.

MSA 25 NM RWY02



CATEGORÍA	DIRECTO RWY 02 <i>Straight in RWY 02</i>				CIRCULANDO OESTE Circling West	ALTN Alternate Minimums
	LNNAV/VNAV DA 330' (304')		LNNAV MDA 400' (374')			
	A	1.2 Km	1.6 Km	1.2 Km	560' (534')	VER PAG. GEN 2.19
	B				1.6 Km	
C	640' (614')					
D		2.0 Km		3.2 Km		

Para sistemas BARO-VNAV no compensados PROC BARO-VNAV NA BLW -10°C ó ABV 47°C

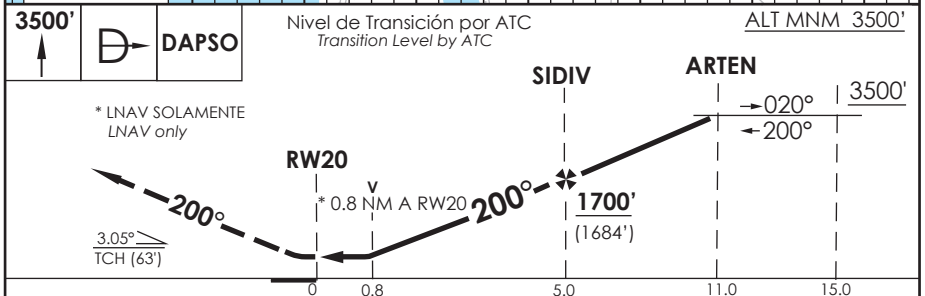
Veloc. Terrestre Kts	80	100	120	140	160
Angulo DES 3,0° FPM	425'	531'	637'	743'	849'
MAPt en RWY02					

DASA / SECCION IAS-MAP

AD. CARRIEL SUR (INTL O/R) CONCEPCION - CHILE

SCIE IAC 10
RNP RWY 20

CONCEPCION RADAR Concepción RADAR		125.8/129.35	TORRE CONCEPCION Concepción Tower		118.6	CONTROL TERRESTRE Ground Control		121.9
RNP	FINAL APCH CRS 200°	MNM ALT SIDIV 1700'	LNAV/VNAV DA(H) 270'(254')		AD Elev. 26'	THR 20 Elev. 16'		4300 FT MSA 25 NM RWY20
APCH FRUSTRADA: Ascenso 3500' directo DAPSO, ingrese HLDG 020° izquierda o según autorización ATC. Missed Apch: Climb to 3500' direct to DAPSO, enter on HLDG 020° left or according to ATC clearance.								



C A T E G O R Í A	DIRECTO RWY 20 <i>Straight in RWY 20</i>		CIRCULANDO OESTE <i>Circling West</i>	ALTN <i>Alternate Minimums</i>	
	LNAV/VNAV DA 270' (254')	LNAV MDA 320' (304')			
	A	1.6 Km	1.6 Km	560'(534')	VER PAG. GEN 2.19
	B			640'	
C	(614')				
D			3.2 Km		
Para sistemas BARO-VNAV no compensados PROC BARO-VNAV NA BLW -10°C ó ABV 47°C					
Veloc. Terrestre Kts	80	100	120	140	160
Angulo DES 3.05° FPM	432'	540'	648'	755'	863'
MAPt en RW20					

CAMBIO: Tabla de codificación
CHANGE: Coding table

AMDT 99

15 MAYO 2025

DASA / SECCION IAS-MAP

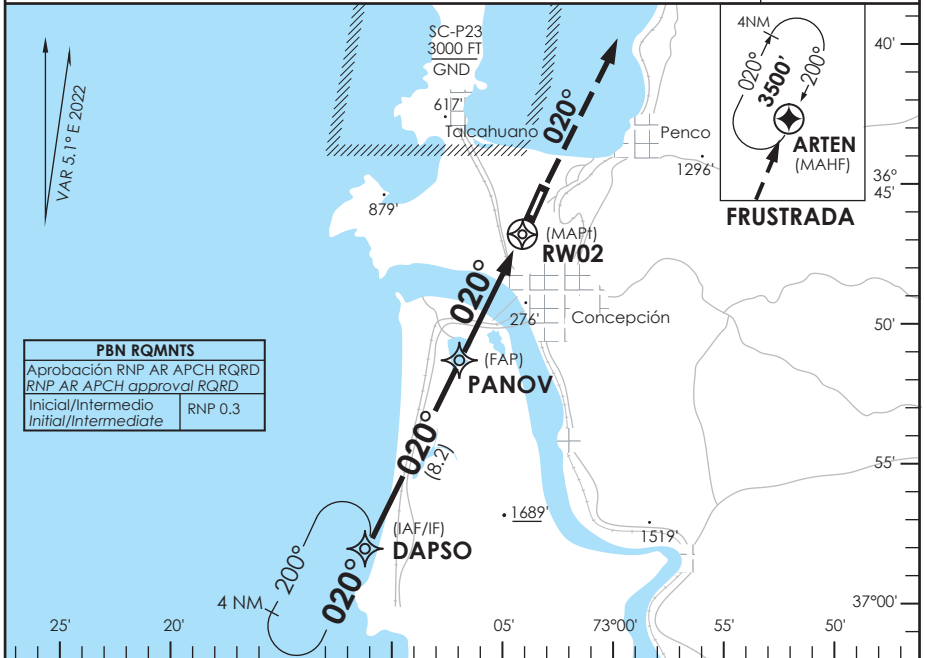
AD. CARRIEL SUR (INTL O/R)
CONCEPCION - CHILE

SCIE IAC 11
RNP Z RWY 02 (AR)

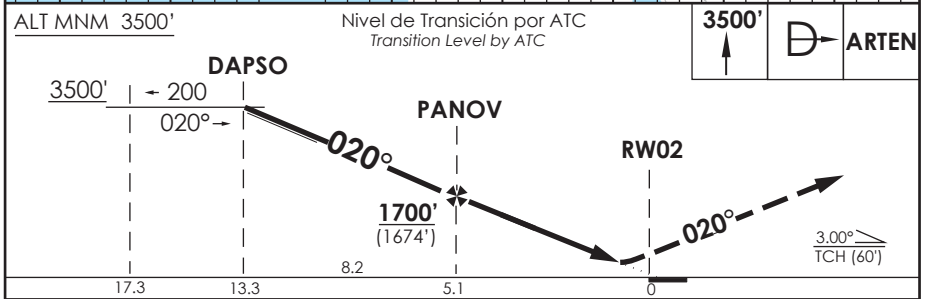
CONCEPCION RADAR Concepción RADAR	125.8/129.35	TORRE CONCEPCION Concepción Tower	118.6	CONTROL TERRESTRE Ground Control	121.9
RNP	FINAL APCH CRS 020°	MNM ALT PANOV 1700'	DA(H) 280'(254')	AD Elev. THR 02 Elev.	26' 26'

APCH FRUSTRADA: Ascenso 3500' directo ARTEN, ingrese HLDG 200° derecha o según autorización ATC.
 Missed Apch: Climb to 3500' direct to ARTEN, enter on HLDG 200° right or according to ATC clearance.

4300 FT
MSA 25 NM RW02



PBN RQMNTS	
Aprobación RNP AR APCH RQRD	
RNP AR APCH approval RQRD	
Inicial/Intermedio	RNP 0.3
Initial/Intermediate	



A	DIRECTO RWY 02 Straight in RWY 02		RNP AR RWY 02 SCIE: Para sistemas BARO-VNAV no compensados PROC NA BLW 0°C ó ABV 47°C
	RNP 0.1		
B	DA 280' (254')		ALTN NA (RNP BLW 0.3)
	ALSF-2	WO ALSF-2	
C	0.8 Km	1.6 Km	
D			

Veloc. Terrestre Kts	80	100	120	140	160	REQUIERE AUTORIZACIÓN ESPECIAL PARA ACFT Y TRIPULACIÓN SPECIAL ACFT AND AIRCREW AUTHORIZATION RQRD
Angulo DES 3.0° FPM	425'	531'	637'	743'	849'	
MAPt en DA						

DASA / SECCION AS-MAP