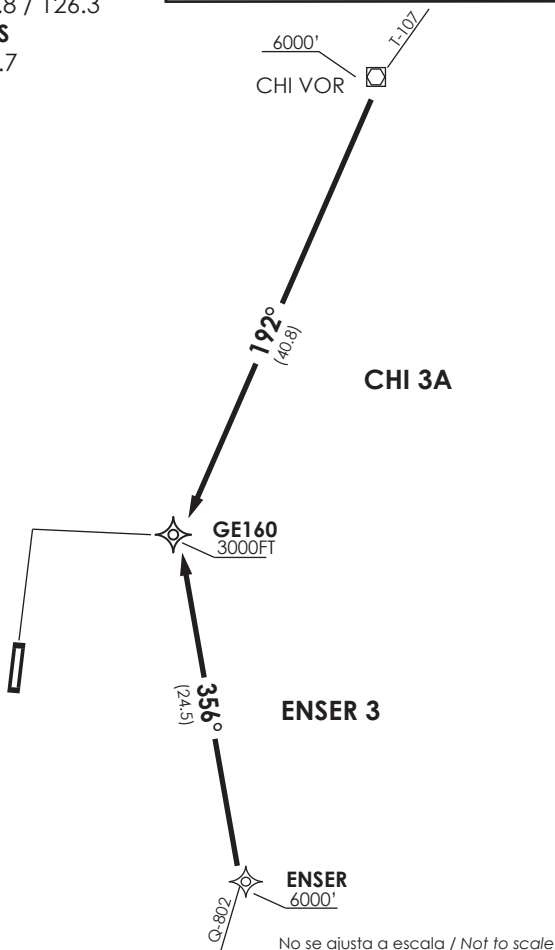




SANTIAGO
 CTL 135.8 / 126.3
LOS ANGELES
 INFO 126.7



Notas

- 1.- Requiere aprobación RNAV1 o RNP1.
- 2.-Requiere GNSS.

Notes

- 1.- RNAV1 OR RNP1 approval required.
- 2.- GNSS required.

Nivel de Transición por AFIS
 Transition Level by AFIS

No se ajusta a escala / Not to scale

STAR CHI 3A / ENSER 3 RNAV

CHI 3A: En AWY T-107, VOR CHI proceder directo a GE160. Cruzar VOR CHI a 6000FT o superior, GE160 a 3000 FT o superior, luego según autorización ATC.

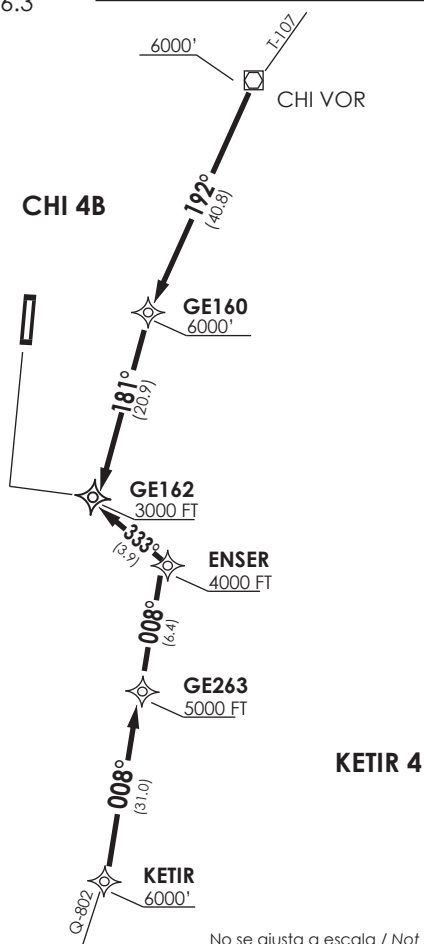
CHI 3A: On AWY T-107, from VOR CHI proceed direct to GE160. Cross VOR CHI at or above 6000FT, GE160 at or above 3000 FT, then according to ATC clearance.

ENSER 3: En AWY Q-802, desde ENSER proceder directo a GE160. Cruzar ENSER a 6000FT o superior, GE160 a 3000 FT o superior, luego según autorización ATC.

ENSER 3: On AWY Q-802, from ENSER proceed direct to GE160. Cross ENSER at or above 6000FT, GE160 at or above 3000 FT, then according to ATC clearance.

DASA / SECCION A1-S-MAP

SANTIAGO
 CTL 135.8 / 126.3
LOS ANGELES
 INFO 126.7



- Notas
- 1.- Requiere aprobación RNAV1 o RNP1.
 - 2.- Requiere GNSS.
- Notes
- 1.- RNAV1 OR RNP1 approval required.
 - 2.- GNSS required.

Nivel de Transición por AFIS
 Transition Level by AFIS

No se ajusta a escala / Not to scale

STAR CHI 4B / KETIR 4 RNAV

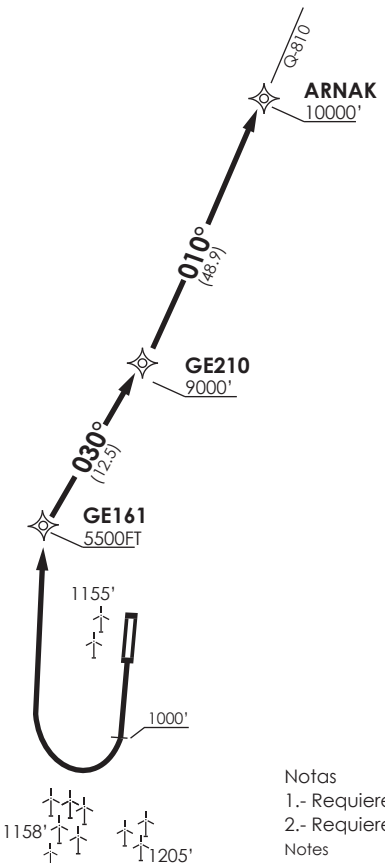
CHI 4B: En AWY T-107, desde CHI VOR proceder directo a GE160 - GE162. Cruzar CHI VOR a 6000FT o superior, GE-160 a 6000FT, GE162 a 3000 FT o superior, luego según autorización ATC.

CHI 4B: On AWY T-107, from CHI VOR proceed direct to GE160 - GE162. Cross CHI VOR at or above 6000FT, GE160 at or above 6000FT, GE162 at or above 3000 FT, then according to ATC clearance.

KETIR 4: En AWY Q-802, desde KETIR proceder directo a GE263-ENSER-GE162. Cruzar KETIR a 6000FT o superior, GE263 a 5000 FT o superior, ENSER a 4000 FT o superior, GE162 a 3000 FT o superior, luego según autorización ATC.

KETIR 4: On AWY Q-802, from KETIR proceed direct to GE263-ENSER-GE162. Cross KETIR at or above 6000FT, GE263 at or above 5000 FT, ENSER at or above 4000 FT, GE162 at or above 3000 FT, then according to ATC clearance.

DASA / SECCION AS-MAP



LOS ANGELES
 INFO 126.7
SANTIAGO
 CTL 135.8 / 126.3

MNM Razón ASC:
 MNM Climb rate:
 320 FT/NM TIL 9000FT

- Notas
- 1.- Requiere aprobación RNAV1 o RNP1.
 - 2.- Requiere GNSS.
- Notes
- 1.- RNAV1 or RNP1 approval required.
 - 2.- GNSS required.

Altitud de Transición 10000FT
 Transition Altitude 10000FT

No se ajusta a escala / Not to scale

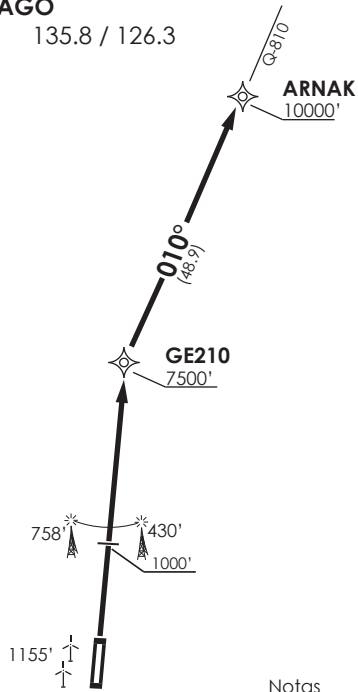
ARNAK 4J RNAV

Ascender hasta 1000FT, posterior viraje derecha directo a GE161- GE210 -ARNAK para interceptar AWY Q-810. Cruzar GE161 a 5500FT o superior, GE210 a 9000FT o superior, ARNAK 10000FT o superior, luego según autorización ATC.

Climb until 1000FT, then right turn direct to GE161- GE210 - ARNAK to intercept AWY Q-810. Cross GE161 at or above 5500FT, GE210 at or above 9000FT, ARNAK at or above 10000FT, then according to ATC clearance.



LOS ANGELES
 INFO 126.7
SANTIAGO
 CTL 135.8 / 126.3



MNM Razón ASC:
 MNM Climb rate:
 350 FT/NM TIL 10000FT

- Notas
- 1.- Requiere aprobación RNAV1 o RNP1.
 - 2.- Requiere GNSS.
- Notes
- 1.- RNAV1 or RNP1 approval required.
 - 2.- GNSS required.

Altitud de Transición 10000FT
 Transition Altitude 10000FT

No se ajusta a escala / Not to scale

ARNAK 3K RNAV

Ascender hasta 1000FT, posterior directo a GE210-ARNAK para interceptar AWY Q-810. Cruzar GE210 a 7500FT o superior, ARNAK 10000FT o superior, luego según autorización ATC.

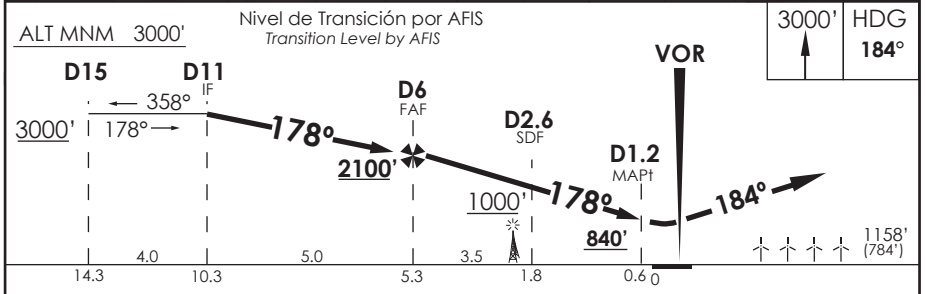
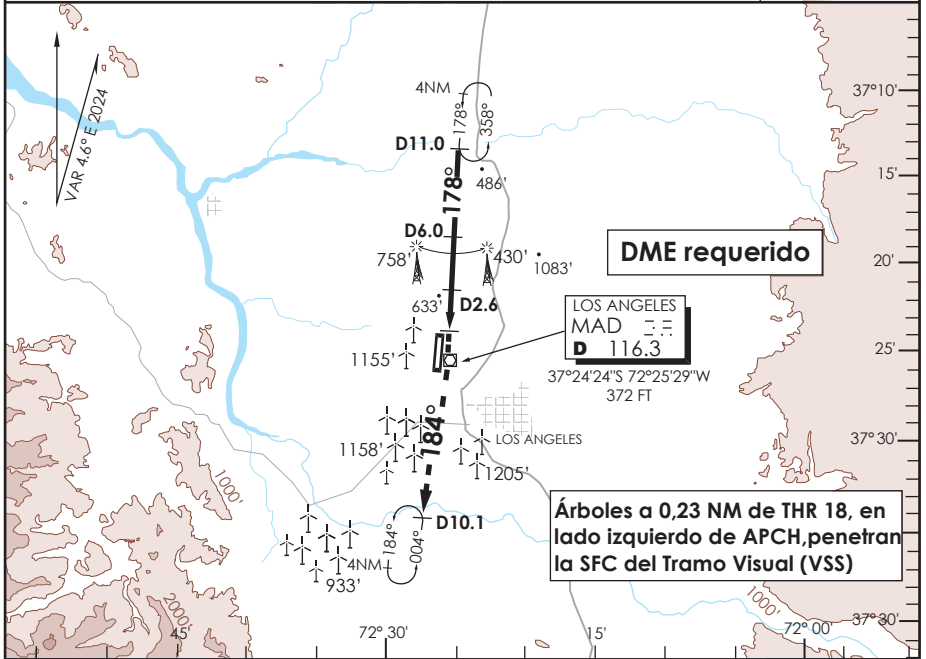
Climb until 1000FT, then direct to GE210-ARNAK to intercept AWY Q-810. Cross GE210 at or above 7500FT, ARNAK at or above 10000FT, then according to ATC clearance.

DASA / SECCION AIS-MAP

AD. MARIA DOLORES LOS ANGELES - CHILE

SCGE IAC 1
VOR Z Rwy 18

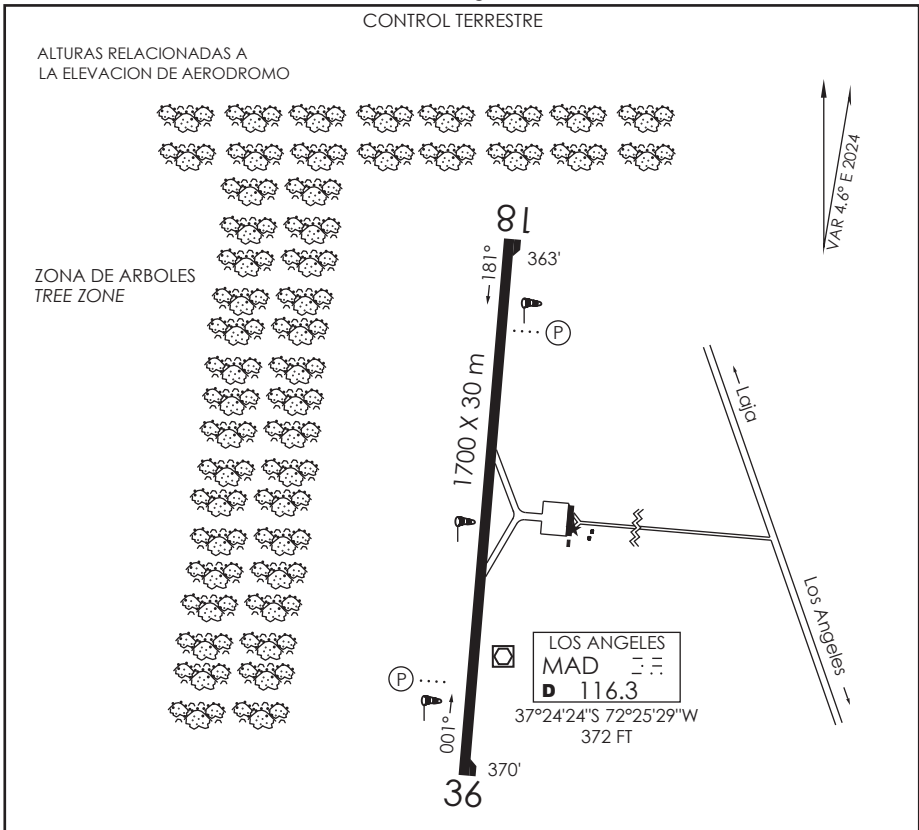
ACC SANTIAGO Santiago Center		135.8/126.3		LOS ANGELES INFORMACION Los Angeles Information		126.7	
VOR MAD 116.3	FINAL APCH CRS 178°	MNM ALT D.6.0 2100'	MDA(H) 840'(477')	AD Elev. THR 18 Elev.	374' 363'		
APCH FRUSTRADA: Ascenso 3000' en R184 VOR MAD, hasta D10.1 S VOR MAD, luego ingreso a HLDG 004° izquierdo. Missed Apch: Climb to 3000' on R184 VOR MAD, till D10.1 S VOR MAD, then enter on HLDG 004° left.							4500 FT
							MSA 25 NM MAD



CATEGORIA	DIRECTO RWY 18 <i>Straight in RWY 18</i>	CIRCULANDO <i>Circling</i>	ALTN <i>Alternate Minimums</i>
	MDA 840' (477')		
A	1.6 Km	NA	VER PAG. GEN 2.19
B			
C			SEE PAGE GEN 2.19

Veloc. Terrestre Kts	70	90	100	120	140	160
----------------------	----	----	-----	-----	-----	-----

DASA / SECCION AIS-MAP



INFORMACION ADICIONAL DE LA PISTA

PISTA	ILUMINACION	RESISTENCIA	DATOS OPERACION DE PISTA DISPONIBLE				
			TORA	TODA	ASDA	LDA	ANCHO
18	REIL MIRL (P) 3.0°	PCR 440 F/A/X/T	1700 m	1700 m	1700 m	1700 m	30 m
36	REIL MIRL (P) 3.4°						

SERVICIOS DISPONIBLES

POLICIA INTERNACIONAL ADUANA SANIDAD METEOROLOGIA S.E.I.

MINIMOS DE DESPEGUE

HORA OPERACION CONSULTE GEN Parte 6

AERONAVES	PISTA		* Consulte página 2.13 Tabla 2.2
	18	36	
MONOMOTOR/REACTOR/TURBO	*	*	
BIMOTOR/REACTOR/TURBO	1.6 km *	1.6 km *	
TRES O MAS MOTOR/REACTOR/TURBO	0.8 km *	0.8 km *	
SIN ALTERNATIVA POST DESPEGUE	MINIMOS ATERRIZAJE AD. SALIDA	MINIMOS ATERRIZAJE AD. SALIDA	

SCGE INFO RWY

DGAC

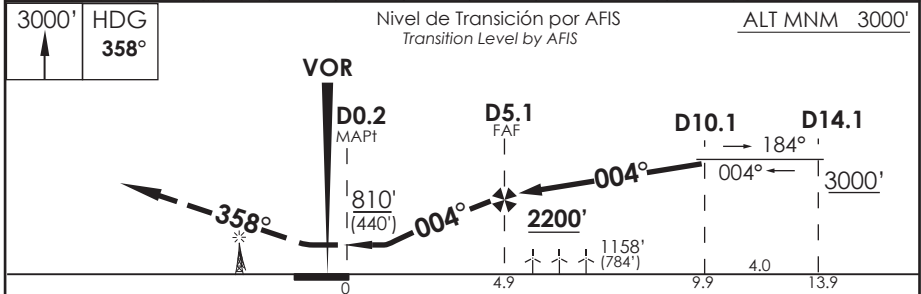
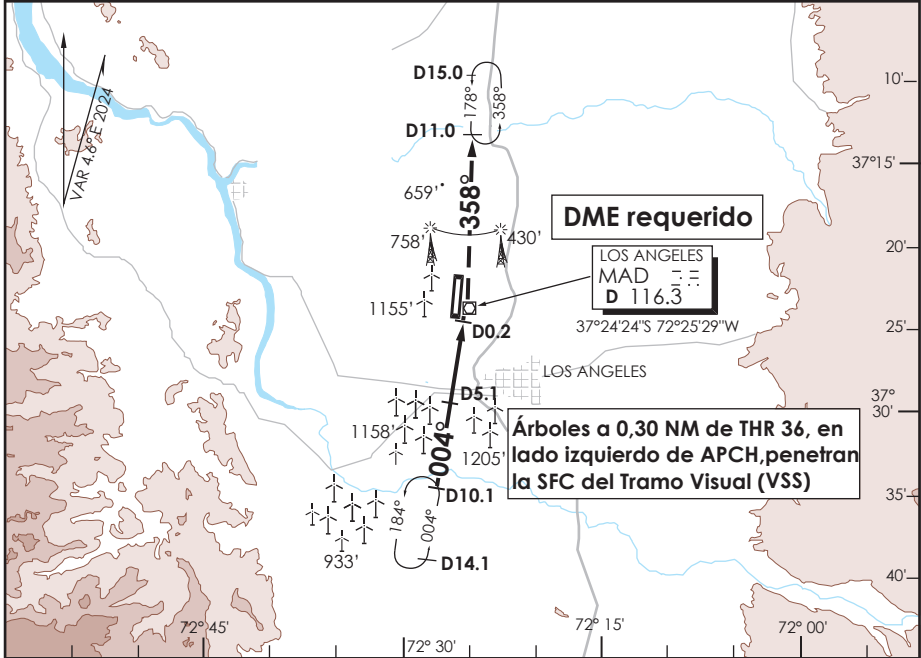
15 MAYO 2025

AD. MARIA DOLORES LOS ANGELES - CHILE

SCGE IAC 2
VOR Z Rwy 36

ACC SANTIAGO Santiago Center		135.8/126.3		LOS ANGELES INFORMACION Los Angeles Information		126.7		4500 FT MSA 25 NM MAD
VOR MAD 116.3	FINAL APCH CRS 004°	MNM ALT D5.1 2200'	MDA(H) 810'(440')	AD Elev. THR 36 Elev.	374' 370'			

APCH FRUSTRADA: Ascenso 3000' en R358 VOR MAD, hasta D11N VOR MAD, luego ingreso a HLDG 178° izquierdo.
Missed Apch: Climb to 3000' on R358 VOR MAD, fill D11N VOR MAD, then enter on HLDG 178° left.



CATEGORIA	DIRECTO RWY 36 <i>Straight in RWY 36</i>	CIRCULANDO <i>Circling</i>	ALTN <i>Alternate Minimums</i>
	MDA 810' (440')		
A	1.6 Km	NA	VER PAG. GEN 2.19 SEE PAGE GEN 2.19
B			
C	2.0 Km		

Veloc. Terrestre Kts	70	90	100	120	140	160
----------------------	----	----	-----	-----	-----	-----

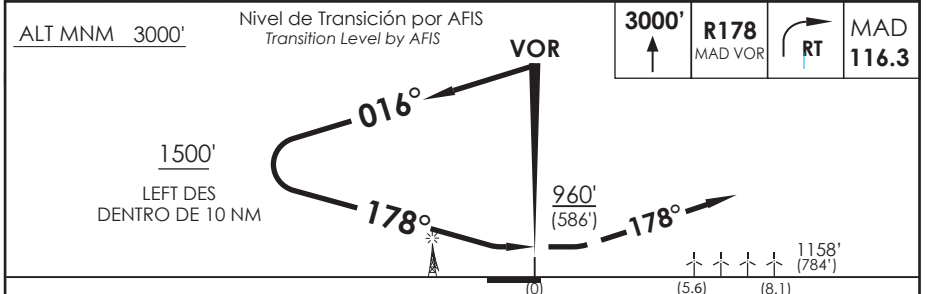
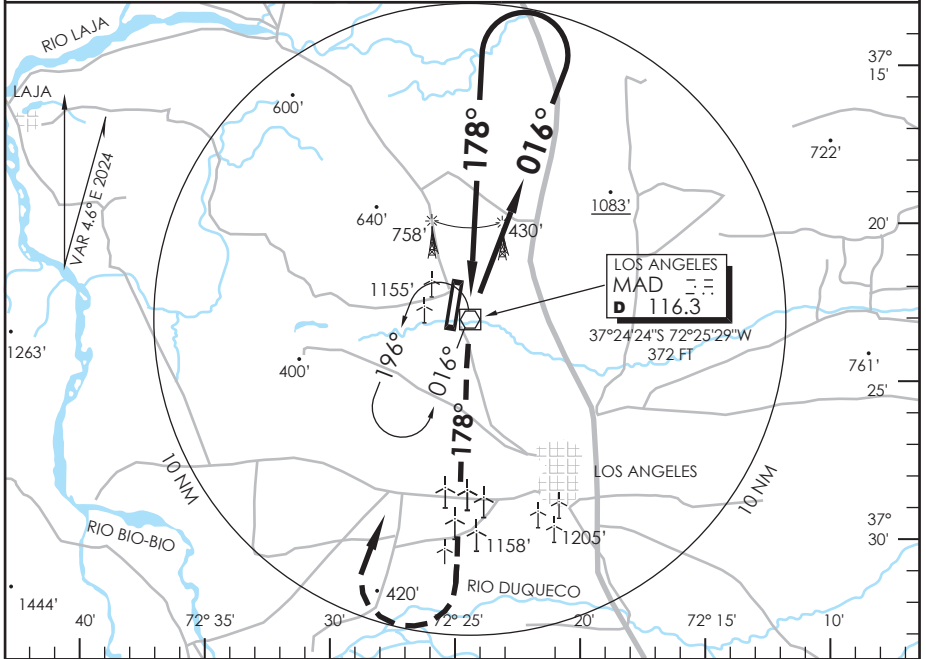
AD. MARIA DOLORES LOS ANGELES - CHILE

SCGE IAC 3
VOR Y Rwy 18

ACC SANTIAGO Santiago Center		135.8/126.3	LOS ANGELES INFORMACION Los Angeles Information		126.7	<div style="border: 1px solid black; border-radius: 50%; width: 60px; height: 60px; display: flex; align-items: center; justify-content: center; margin: 0 auto;"> 4500 FT </div>
VOR MAD 116.3	FINAL APCH CRS 178°	WO FAF	MDA(H) 960'(586')	AD Elev. THR 18 Elev.	374' 363'	

APCH FRUSTRADA: Ascenso 3000' en R178 viraje derecha directo VOR MAD, ingrese a HLDG 016° izquierdo.
Missed Apch: Climb to 3000' on R178, right turn direct to MAD VOR to enter on HLDG 016° left.

MSA 25 NM MAD



CATEGORIA	DIRECTO RWY 18 <i>Straight in RWY 18</i>	CIRCULANDO <i>Circling</i>	ALTN <i>Alternate Minimums</i>
	MDA 960' (586')		
A	1.6 Km	NA	VER PAG. GEN 2.19
B			
C			

DASA / SECCION AIS-MAP

AD. MARIA DOLORES
LOS ANGELES - CHILE

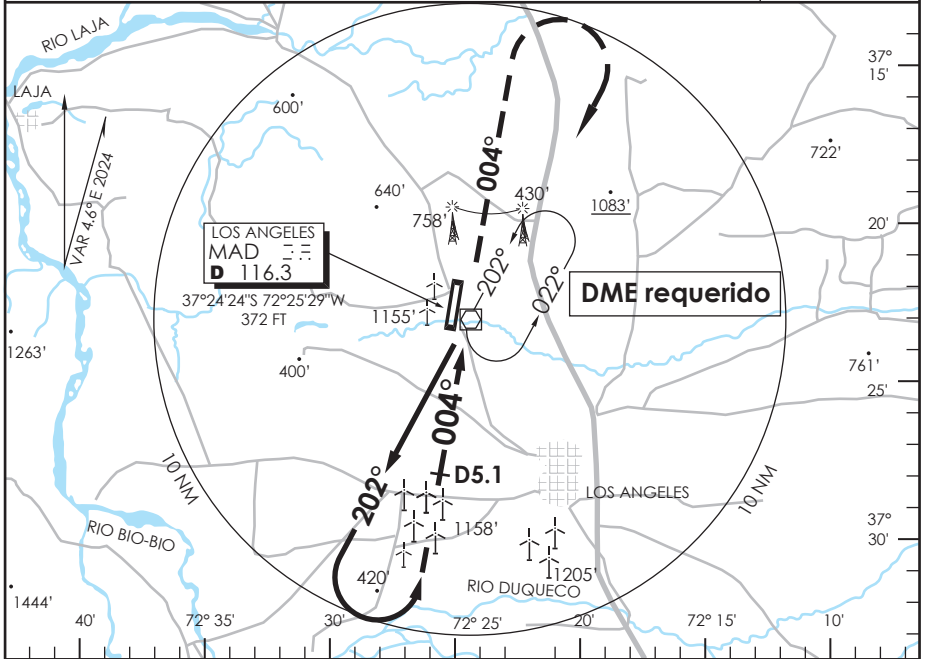
SCGE IAC 4
VOR Y Rwy 36

ACC SANTIAGO Santiago Center		135.8/126.3	LOS ANGELES INFORMACION Los Angeles Information		126.7
VOR MAD 116.3	FINAL APCH CRS 004°	WO FAF	MDA(H) 810'(436')	AD Elev. THR 36 Elev.	374' 370'



APCH FRUSTRADA: Ascenso 3000' R004, viraje derecha directo VOR MAD, ingrese a HLDG 202° izquierdo.
 Missed Apch: Climb to 3000' on R004, right turn direct to MAD VOR to enter on HLDG 202° left.

MSA 25 NM MAD



ALT MNM 3000' Nivel de Transición por AFIS Transition Level by AFIS

VOR

3000' R004 MAD VOR RT MAD 116.3

810' (436') 1520' (1146') 12200' 1158' (784')

3000' LEFT DES DENTRO DE 10 NM


0 4.9 (5.4) (7.9)

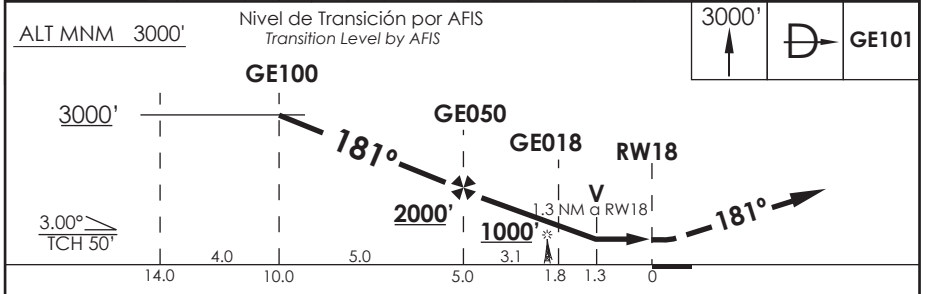
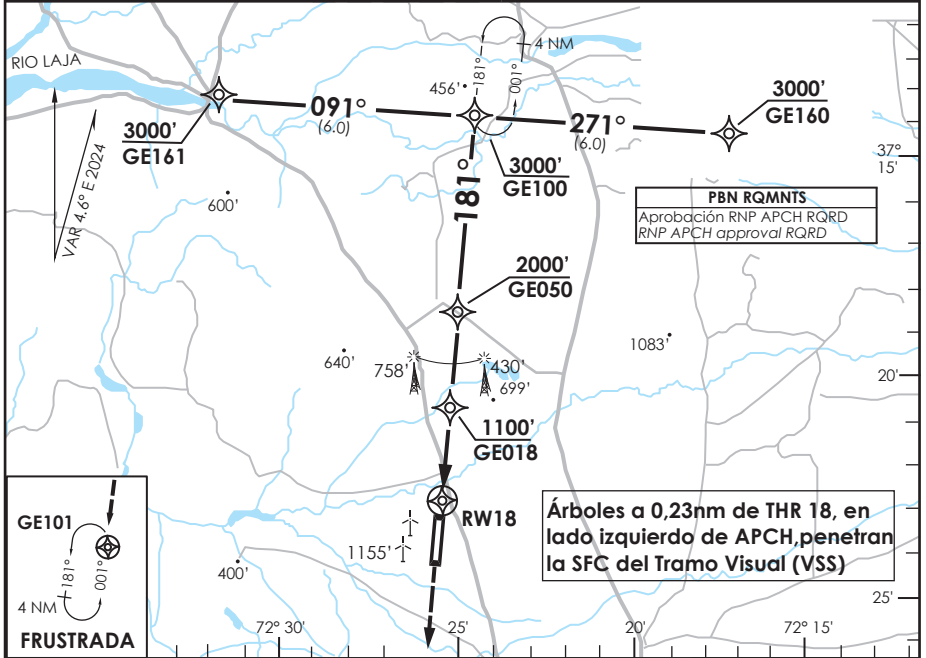
CATEGORIA	DIRECTO RWY 36 Straight in RWY 36		CIRCULANDO Circling	ALTN Alternate Minimums	
	MDA 810' (436')	WO DME MDA 1520' (1146')			
A	1.6 Km	2.0 Km	NA	VER PAG. GEN 2.19 SEE PAGE GEN 2.19	
B					2.4 Km
C					5.0 Km

DASA / SECCION AIS-MAP

AD. MARIA DOLORES
LOS ANGELES - CHILE

SCGE IAC 5
RNP Rwy 18 (LNAV only)

ACC SANTIAGO Santiago Center		135.8/126.3		LOS ANGELES INFORMACION Los Angeles Information		126.7		
RNP	FINAL APCH CRS 181°	MNM ALT GE050 2000' (1637')	LNAV MDA(H) 840' (477')	AD Elev. THR 18 Elev.	374'		363'	
APCH FRUSTRADA: Ascenso 3000' directo GE101. Ingreso HLDG 001° izquierdo o según autorización ATC. Missed Apch: Climb to 3000' direct to GE101. Enter on HLDG 001° left o according to ATC clearance.								MSA 25 NM MAD




CATEGORÍA	DIRECTO RWY 18 <i>Straight in RWY 18</i>	CIRCULANDO <i>Circling</i>	ALTN <i>Alternate Minimums</i>
	LNAV MDA 840' (477')		
A	1.6 Km	NA	VER PAG. GEN 2.19
B			
C			

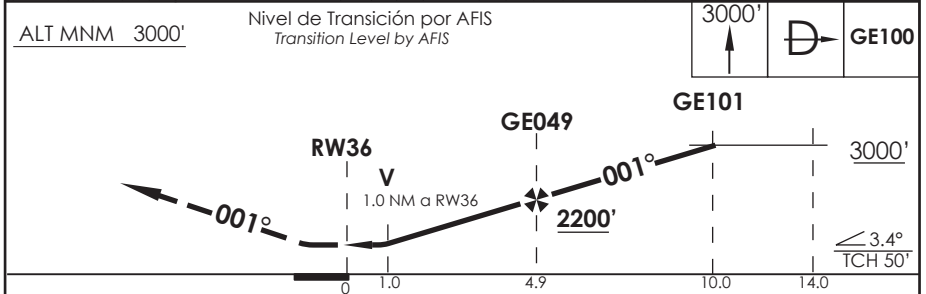
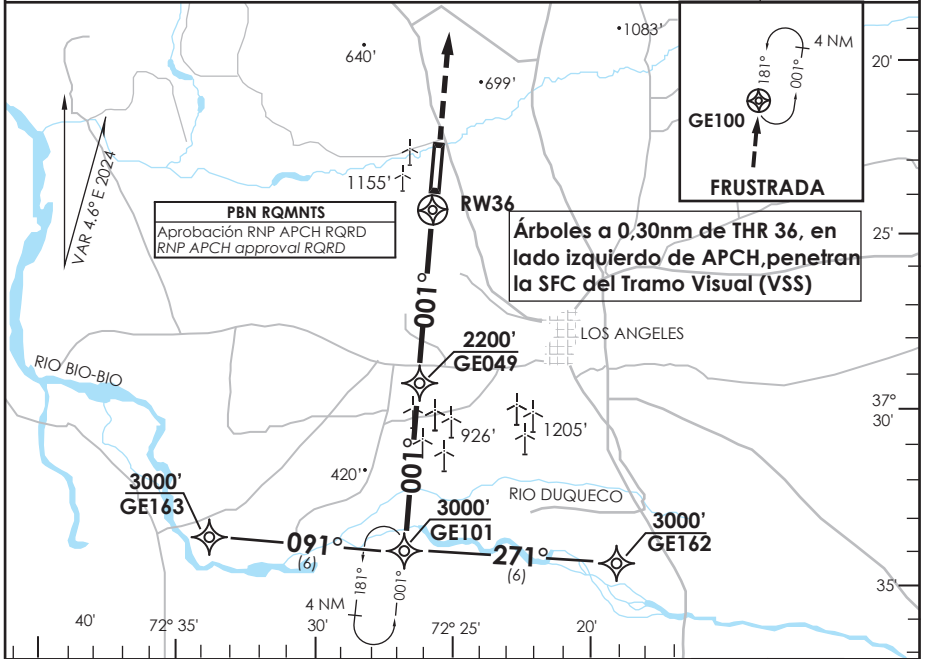
Veloc. Terrestre Kts	70	90	100	120	140	160
----------------------	----	----	-----	-----	-----	-----

DASA / SECCION AIS-MAP

AD. MARIA DOLORES
LOS ANGELES - CHILE

SCGE IAC 6
RNP Rwy 36 (LNAV only)

ACC SANTIAGO Santiago Center		135.8/126.3		LOS ANGELES INFORMACION Los Angeles Information		126.7	
RNP	FINAL APCH CRS 001°	MNM GE049 2200' (1830')	MDA(H) 780' (410')	AD Elev. THR 36 Elev.	374' 370'	 4500 FT MSA 25 NM MAD	
APCH FRUSTRADA: Ascenso 3000' directo GE100, ingrese a HLDG 181° izquierdo o según autorización ATC. Missed Apch: Climb to 3000' direct to GE100. Enter on HLDG 181° left o according to ATC clearance.							



CATEGORIA	DIRECTO RWY 36 <i>Straight in RWY 36</i>	CIRCULANDO <i>Circling</i>	ALTN <i>Alternate Minimums</i>
	MDA 780' (410')		
A	1.6 Km	NA	VER PAG. GEN 2.19
B			
C			

Veloc. Terrestre Kts	70	90	100	120	140	160

DASA /SECCION AIS-MAP