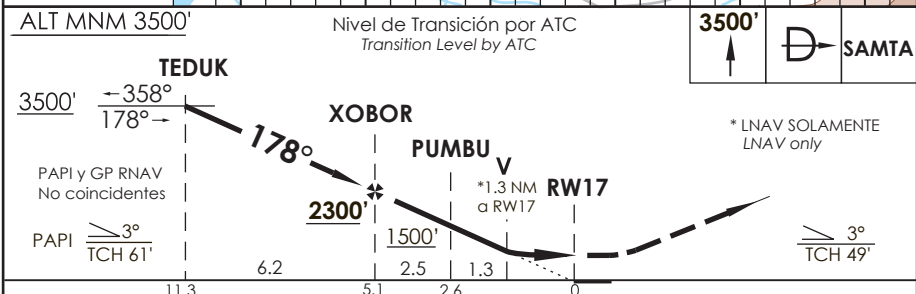
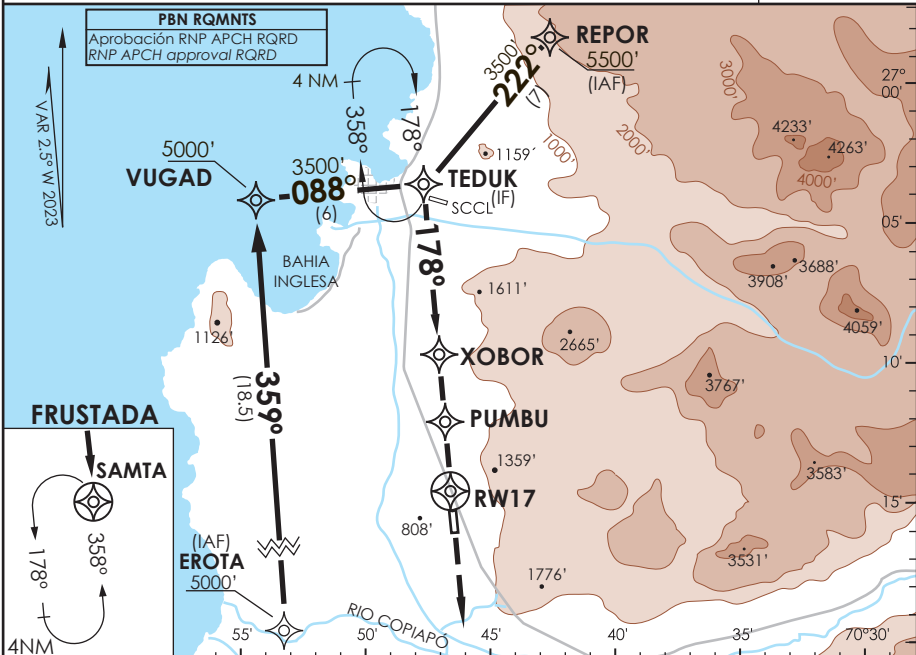


AD. DESIERTO DE ATACAMA CALDERA - CHILE

SCAT IAC 5
RNP RWY 17

APP IQUIQUE RADAR <i>Iquique Radar Approach</i>	120.3/128.3	TORRE ATACAMA <i>Atacama Tower</i>	118.3	CONTROL TERRESTRE <i>Ground Control</i>	121.6
RNP	FINAL APCH CRS 178°	MNM ALT XOBOR 2300'	LNAV/VNAV DA(H) 960'(340')	AD Elev. 670' THR 17 Elev. 620'	7000 FT MSA 25 NM RW17
APCH FRUSTRADA: Ascenso 3500' directo a SAMTA, ingreso HLDG 358° izquierdo o según autorización ATC. <i>Missed Apch: Climb to 3500' direct to SAMTA, enter on HLDG358° left or according to ATC clearance.</i>					



C A T E G O R Í A	DIRECTO RWY 17 <i>Straight in RWY 17</i>				CIRCULANDO OESTE <i>Circling west</i>		ALTN <i>Alternate Minimums</i>
	LNAV/VNAV DA 960'(340')		LNAV MDA 1080'(460')				
	ALSF-1	WO ALSF-1	ALSF-1	WO ALSF-1			
A	1.2 Km	1.6 Km	1.2 Km	1.6 Km	1120'	1.6 Km	VER PAG. GEN 2.19
B			1.6 Km	2.0 Km	(450')	2.4 Km	
C			2.0 Km	2.4 Km	1220'	3.2 Km	
D			2.4 Km		(550')		

Para sistemas BARO VNAV no compensados PROC
BARO-VNAV NA BLW 0°C ó ABV 38°C

Veloc. Terrestre Kts	80	100	120	140	160
Angulo DES 3,0°	425'	525'	631'	736'	841'
MAPt en RW17					

DASA / SECCION AIB-MAP