

DUMAS 3

DEP RWY 26: Viraje derecha para interceptar R273 PWL VOR/DME ascendiendo hasta 4000 FT, luego viraje izquierda para interceptar R255 continuando ascenso en AWY.

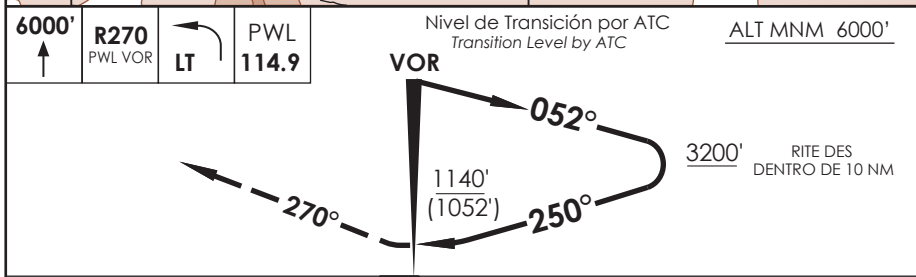
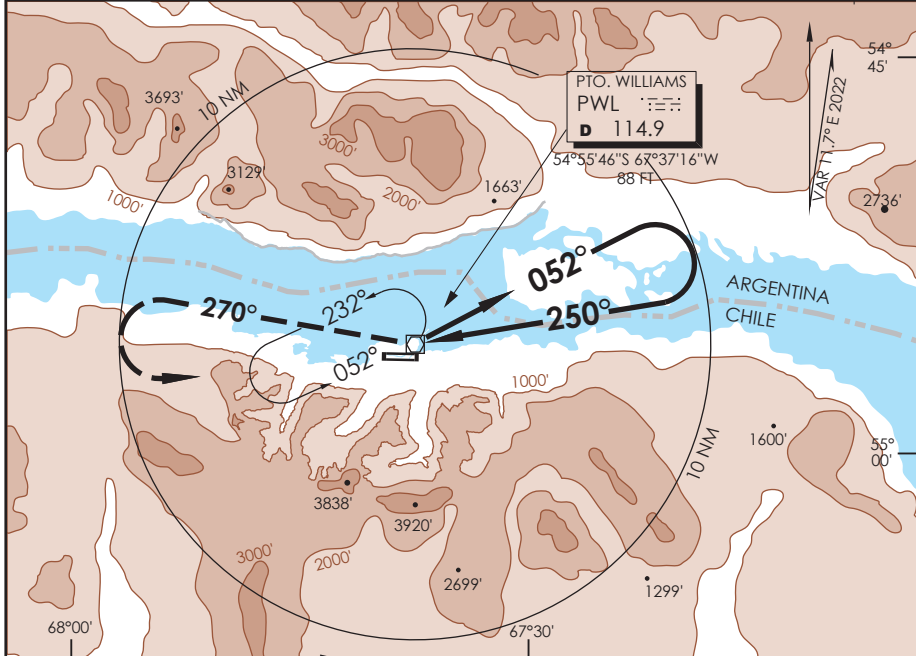
TAKE-OFF RWY 26: Turn right to intercept R273 PWL VOR/DME climbing until 4000 FT, then turn left to intercept R255 to continue climbing on AWY.

DASA / SECCION A3-MAP

AD. GUARDIA MARINA ZAÑARTU PUERTO WILLIAMS - CHILE

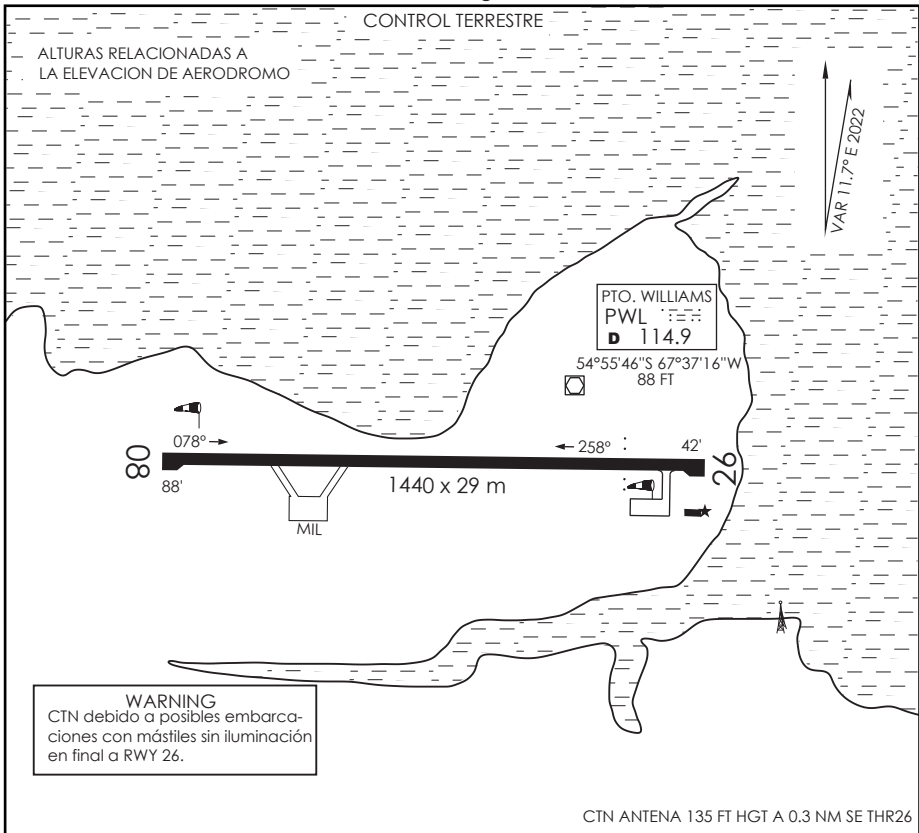
SCGZ IAC 1
VOR A

| | | | | | |
|---|-------------------------------|---------------|--------------------------------|---------------------|--|
| TORRE / APP WILLIAMS Williams Tower / Approach | | 118.5 | | | |
| VOR PWL 114.9 | FINAL APCH CRS 250° | WO FAF | MDA(H) 1140' (1052') | AD Elev. 88' |  MSA 25 NM PWL |
| APCH FRUSTRADA: Ascenso 6000' en R270 PWL viraje izquierda directo VOR PWL, ingreso en HLDG 052° izquierdo. Missed Apch: Climb to 6000' on R270 PWL, left turn direct to PWL VOR, enter on HLDG 052° left. | | | | | |



| | | | |
|------------------|--|---------------------------------------|----------------------------|
| C A B C | | CIRCULANDO NORTE Circling North | ALTN Alternate Minimums |
| | | 1140' (1052') | VER PAG. GEN 2.19 |
| | | | 2.0 Km |
| | | | 2.4 Km |
| | | 4.8 Km | SEE PAGE GEN 2.19 |

DASA / SECCION AIS-MAP



INFORMACION ADICIONAL DE LA PISTA

| PISTA | ILUMINACION | RESISTENCIA | DATOS OPERACION DE PISTA DISPONIBLE | | | | |
|-------|-------------------------|----------------|-------------------------------------|--------|--------|--------|-------|
| | | | TORA | TODA | ASDA | LDA | ANCHO |
| 08 | REDL | PCN 33 F/A/X/T | 1440 m | 1440 m | 1440 m | 1440 m | 29 m |
| 26 | REDL REIL APAPI 2.8° | | | | | | |

SERVICIOS DISPONIBLES

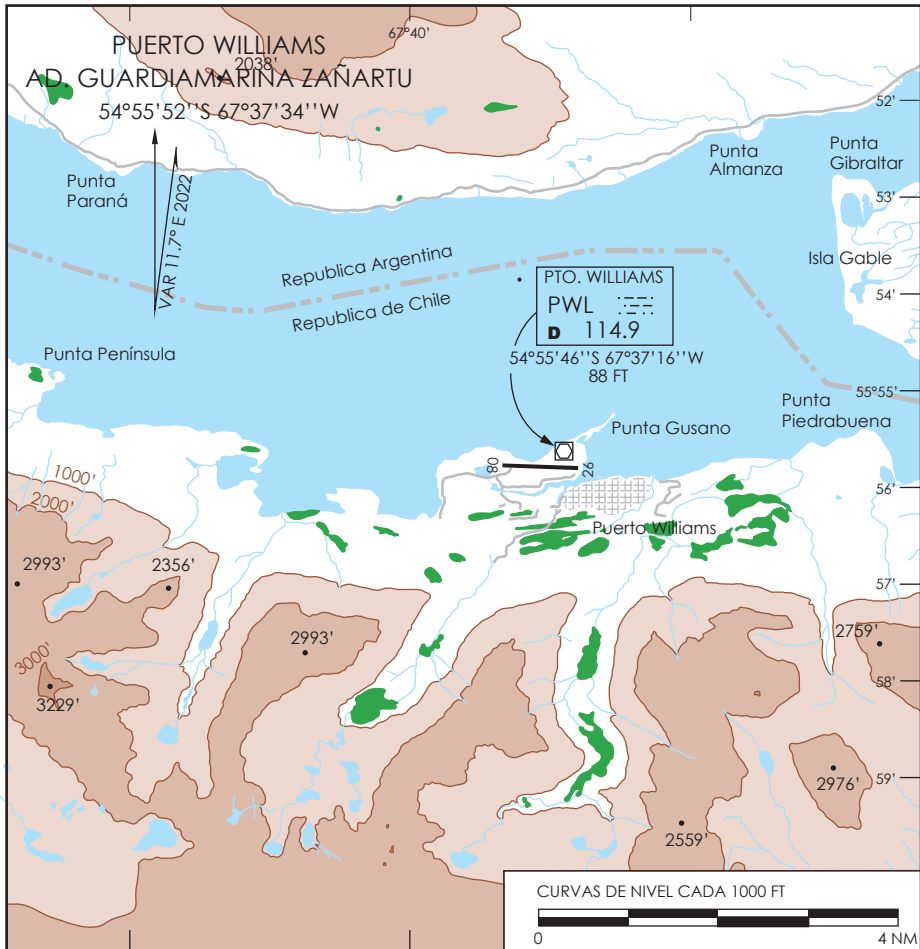
POLICIA INTERNACIONAL ADUANA SANIDAD METEOROLOGIA S.E.I.

MINIMOS DE DESPEGUE

HORA OPERACIÓN
 CONSULTE GEN Parte 6 y NOTAM

| AERONAVES | PISTA | | * Consulte página 2.13 Tabla 2.2 |
|--------------------------------|----------------------------------|----------------------------------|---|
| | 08 | 26 | |
| MONOMOTOR/REACTOR/TURBO | * | * | PLATAFORMA MILITAR: USO EXCLUSIVO ACFT NAVALES |
| BIMOTOR/REACTOR/TURBO | 1.6 km * | 1.6 km * | |
| TRES O MAS MOTOR/REACTOR/TURBO | 0.8 km * | 0.8 km * | |
| SIN ALTERNATIVA POST DESPEGUE | MINIMOS ATERRIZAJE AD. SALIDA | MINIMOS ATERRIZAJE AD. SALIDA | |

SCGZ INFO RWY DGAC 16 MAYO 2024



ELEVACION AERODROMO
 88 FT (27 m)

RESISTENCIA
 PCN 33 F/A/X/T

COMUNICACIONES
 APP/TWR PTO. WILLIAMS 118.5 MHz / RADIO 6649 KHZ.

DISTANCIAS DECLARADAS

| RWY | TORA | TODA | ASDA | LDA |
|-----|--------|--------|--------|--------|
| 08 | 1440 m | 1440 m | 1440 m | 1440 m |
| 26 | 1440 m | 1440 m | 1440 m | 1440 m |

RADIOAYUDAS
 PWL VOR / DME 114.9 MHz

