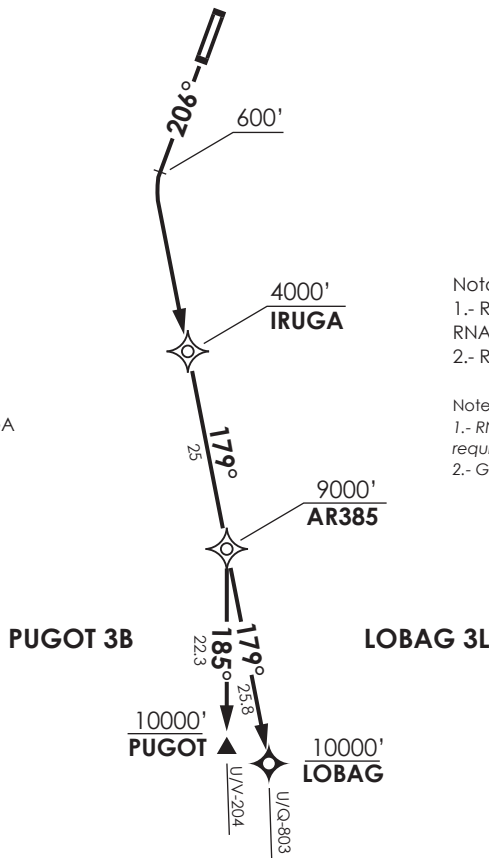


VAR 6.4° W 2022

MNM Razón ASC:
MNM Climb Rate:
270 FT/NM TIL IRUGA



ARICA
GNDC 121.9
TWR 118.5
APP 119.9

Notas
1.- Requiere aprobación
RNAV 1 ó RNP1
2.- Requiere GNSS

Notes
1.- RNAV 1 or RNP 1 approval
required
2.- GNSS required

Altitud de Transición 10000 FT
Transition Altitude 10000 FT

No se ajusta a escala / Not to scale

LOBAG 3L / PUGOT 3B RNAV RWY20

LOBAG 3L: Ascender en TR206° hasta 600 FT, viraje izquierda para continuar via IRUGA - AR385 - LOBAG para interceptar AWY. Cruzar IRUGA 4000 FT o superior, AR385 9000 FT o superior, LOBAG 10000 FT o superior.

LOBAG 3L: Climb on TR 206° until 600 FT, left turn to continue via IRUGA - AR385 - LOBAG to intercept AWY. Cross IRUGA at or above 4000 FT, AR385 at or above 9000 FT, LOBAG at or above 10000 FT.

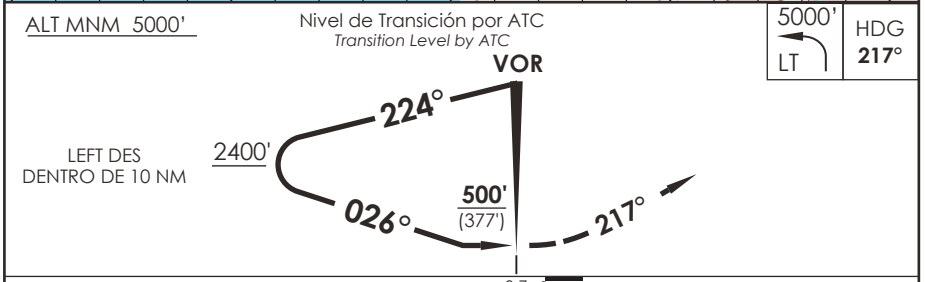
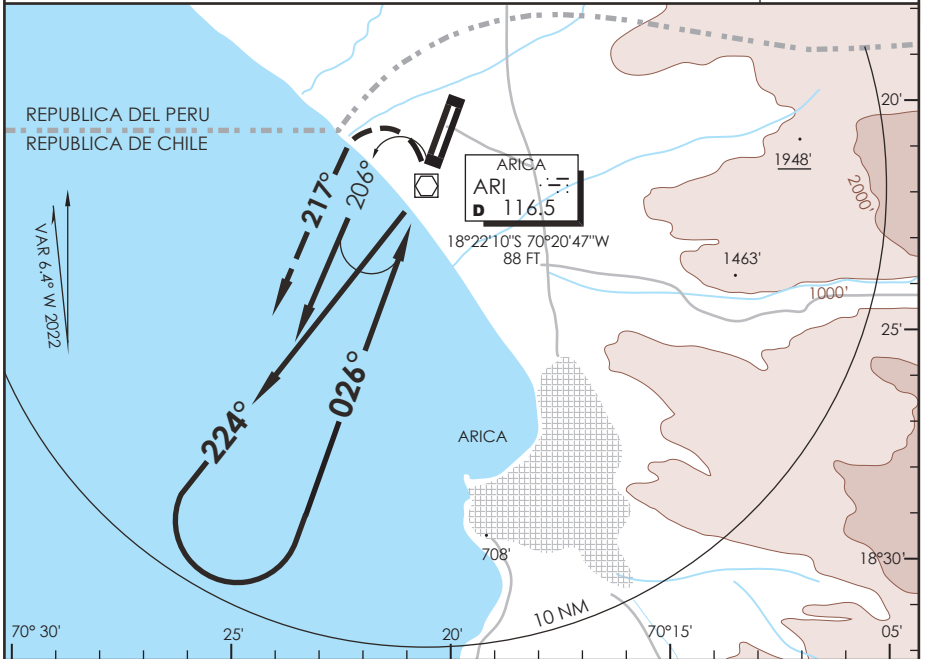
PUGOT 3B: Ascender en TR206° hasta 600 FT, viraje izquierda para continuar via IRUGA - AR385 - PUGOT para interceptar AWY. Cruzar IRUGA 4000 FT o superior, AR385 9000 FT o superior, PUGOT 10000 FT o superior.

PUGOT 3B: Climb on TR 206° until 600 FT, left turn to continue via IRUGA - AR385 - PUGOT to intercept AWY. Cross IRUGA at or above 4000 FT, AR385 at or above 9000 FT, PUGOT at or above 10000 FT

AP. CHACALLUTA
ARICA - CHILE

SCAR IAC 2
VOR Y Rwy 02

APP ARICA Arica Approach	119.9	TORRE ARICA Arica Tower	118.5	CONTROL TERRESTRE Ground Control	121.9
VOR ARI 116.5	FINAL APCH CRS 026°	WO FAF	MDA (H) 500' (377')	AD Elev 166' THR 02 Elev 123'	11000 FT MSA 25 NM ARI
APCH FRUSTRADA: Viraje izquierda HDG 217° en ascenso para 5000', luego viraje izquierda directo ARI VOR e ingreso HLDG 026° izquierdo. Missed Apch: Left turn HDG 217° climbing to 5000', then left turn direct to ARI VOR and enter on HLDG 026° left.					



C A B C D	DIRECTO RWY 02 Straight in RWY 02	CIRCULANDO ESTE Circling East	ALTN Alternate Minimums
	MDA 500' (377')		VER PAG. GEN 2.19
	A	640' (474')	1.6 Km
	B	960' (794')	
C	1120' (954')	4.8 Km	
D	1460' (1294')		

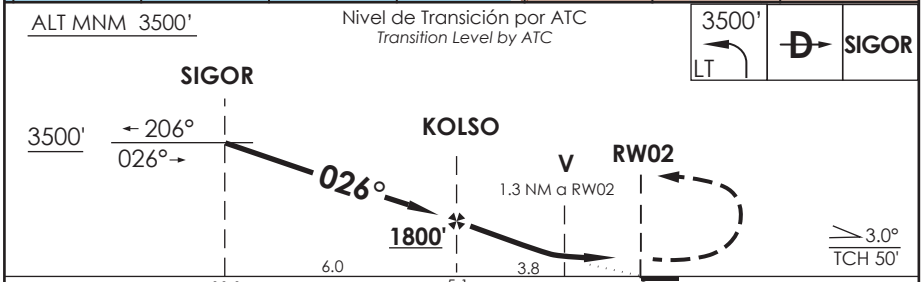
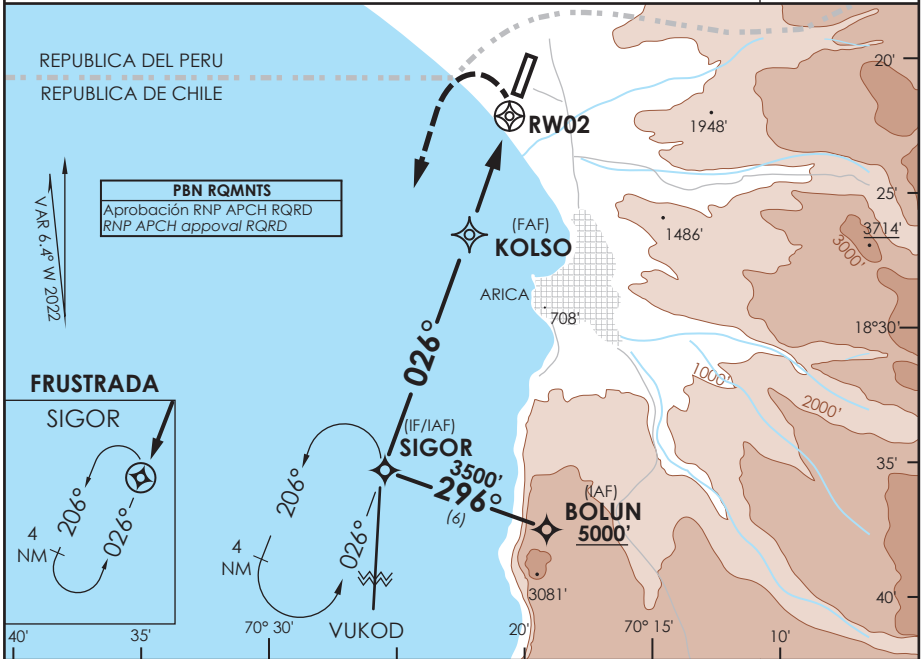
CAMBIO: Menor
 Change: Minor

DGAC AMDT 91

11 AGOSTO 2022

DASA / SECCION A6-MAP

APP ARICA Arica Approach	119.9	TORRE ARICA Arica Tower	118.5	CONTROL TERRESTRE Ground Control	121.9
RNP	FINAL APCH CRS 026°	MNM ALT KOLSO 1800'	LNAV MDA (H) 580' (457')	AD Elev THR 02 Elev	166' 123'
APCH FRUSTRADA: Viraje izquierda en ascenso para 3500' directo SIGOR Ingreso HLDG 026° izquierdo, luego según autorización ATC.					11000 FT
Missed Apch: Left turn climbing to 3500' direct SIGOR, enter on HLDG 026° left, then according to ATC clearance.					
					MSA 25 NM RW02



CATEGORIA	DIRECTO RWY 02 <i>Straight in RWY 02</i>	CIRCULANDO ESTE Circling East	ALTN Alternate Minimums		
	LNAV MDA 580' (457')				
	A	1.6 Km	640' (474') 960' (794')	1.6 Km	
	B	2.4 Km	1120' (954') 1460' (1294')	4.8 Km	
C			VER PAG. GEN 2.19		
D					
Veloc. Terrestre Kts	80	100	120	140	160
Angulo DES 3.0° FPM	425'	531'	637'	743'	849'
MAPt en RW02					

DASA / SECCION AIS-WAP

Tablas de coordenadas / Procedimientos RNAV de SCAR

PROCEDIMIENTOS DE APROXIMACION, SALIDA Y LLEGADA RNAV

Approach, Departure and Arrival RNAV procedures

(Esta información complementa a las cartillas publicadas en la AIP Chile VOL II / This information complements the charts published in the AIP Chile VOL II)

ARICA / AP CHACALLUTA – SCAR
SID 4 RNAV LOBAG 3L / AMDT 91 – 11 AUG 2022

NR SERIE	PATH TERM	PUNTO DE RECORRIDO (WPT)	LAT SEC (SUR)	LONG SEC (WESTE)	FB / FO	COURSE/ TRACK °M (T)	DIST. (NM)	TURN DIRECTION	ALTITUD	REST. VELOCIDAD	ESPECIF. DE NAV
10	CA	-	-	-	-	206°(199,28)	-	-	600FT+	-	RNAV 1 O RNP 1
20	DF	IRUGA	18°35'10.40"	70°19'39.43"	FB	-	-	LT	4000FT+	-	
30	TF	AR385	19°00'02.66"	70°16'07.60"	FB	179°(172,31)	25.00	-	9000FT+	-	
40	TF	LOBAG	19°25'42.00"	70°12'45.00"	FB	179°(172,88)	25,76	-	10000FT+	-	

SID 4 RNAV PUGOT 3B / AMDT 91 – 11 AUG 2022

NR SERIE	PATH TERM	PUNTO DE RECORRIDO (WPT)	LAT SEC (SUR)	LONG SEC (WESTE)	FB / FO	COURSE/ TRACK °M (T)	DIST. (NM)	TURN DIRECTION	ALTITUD	REST. VELOCIDAD	ESPECIF. DE NAV
10	CA	-	-	-	-	206° (199,28)	-	-	600FT+	-	RNAV 1 O RNP 1
20	DF	IRUGA	18°35'10.40"	70°19'39.43"	FB	-	-	LT	4000FT+	-	
30	TF	AR385	19°00'02.66"	70°16'07.60"	FB	179° (172,31)	25.00	-	9000FT+	-	
40	TF	PUGOT	19°22'28.00"	70°15'35.00"	FB	185° (178,68)	22,34	-	10000FT+	-	

SID 5 RNAV VAGUR 2 RWY 20 / AMDT 90 - 21 APR 2022

NR SERIE	PATH TERM	PUNTO DE RECORRIDO (WPT)	LAT SEC (SUR)	LONG SEC (WESTE)	FB / FO	COURSE/ TRACK °M (T)	DIST. (NM)	TURN DIRECTION	ALTITUD	REST. VELOCIDAD	ESPECIF. DE NAV
10	CF	PAKIN	18°34' 40.08"	70°25' 22.37"	FO	206° (199,28)	13,93	LT	5000FT+	-	RNAV 1 O RNP 1
20	DF	ERISO	18°22' 10.00"	69°47' 49.00"	FB	-	-	LT	FL180+	-	
30	TF	AR817	17°54' 33.73"	69°35' 12.98"	FB	030° (023,61)	30.00	-	FL210+	-	
40	TF	VAGUR	17°35' 22.00"	69°26' 30.00"	FB	030° (023,54)	20,85	-	-	-	

Tablas de coordenadas / Procedimientos RNAV de SCAR

PROCEDIMIENTOS DE APROXIMACION, SALIDA Y LLEGADA RNAV											
Approach, Departure and Arrival RNAV procedures											
(Esta información complementa a las cartillas publicadas en la AIP Chile VOL II / This information complements the charts published in the AIP Chile VOL II)											
ARICA / AP CHACALLUTA – SCAR											
IAC 3 RNP RWY 02 (LNAV only) / AMDT 91 – 11 AUG 2022											
NR SERIE	PATH TERM	PUNTO DE RECORRIDO (WPT)	LAT SEC (SUR)	LONG SEC (WESTE)	FB / FO	COURSE/ TRACK °M/T	DIST. (NM)	TURN DIRECTION	ALTITUD	VPA/TCH	PERF DE NAV
10	IF	SIGOR (IAF/IF)	18°31'59,21''	70°24'23,26''	FB	-	-	-	3500 FT +	-	1,0
20	TF	KOLSO (FAF)	18°26'18,12''	70°22'18,04''	FB	026° (019,29)	6,00	-	1800 FT +	-	1,0
30	TF	RW02 (MAPt)	18°21'28,17''	70°20'31,71''	FO	026° (019,29)	5,10	-	173FT+	3,0/50	0,3
40	DF	SIGOR	18°31'59,21''	70°24'23,26''	FO	--	-	LT	3500 FT +	-	1,0
50	HM	SIGOR (MAHF)	18°31'59,21''	70°24'23,26''	FB	026° (019,29)	4,00	-	3500FT+	-	1,0
10	IF	BOLUN (IAF)	18°33'58,51''	70°18'25,58''	FB	-	-	-	5000FT+	-	1,0
20	TF	SIGOR (IAF/IF)	18°31'59,21''	70°24'23,26''	FB	296°(289,26)	6,00	-	3500FT +	-	1,0