

STAR OPURA 3C / UDОВИ 2C / SURTA 2B RNAV

OPURA 3C: Desde OPURA directo a BA330 - KULIR. Cruzar OPURA FL100 o superior, BA330 FL90 o superior, KULIR FL80 o superior, luego según autorización ATC.

OPURA 3C: From OPURA direct to BA330 - KULIR. Cross OPURA at or above FL100, BA330 at or above FL90, KULIR at or above FL80, then according to ATC clearance.

UDОВИ 2C: Desde UDОВИ directo a BA330 - KULIR. Cruzar UDОВИ FL110 o superior, BA330 FL90 o superior, KULIR FL80 o superior, luego según autorización ATC.

UDОВИ 2C: From UDОВИ direct to BA330 - KULIR. Cross UDОВИ at or above FL110, BA330 at or above FL90, KULIR at or above FL80, then according to ATC clearance.

SURTA 2B: Desde SURTA directo BA331 - RENOR. Cruzar SURTA FL170 o superior, BA331 FL110 o superior, RENOR FL90 o superior, luego según autorización ATC.

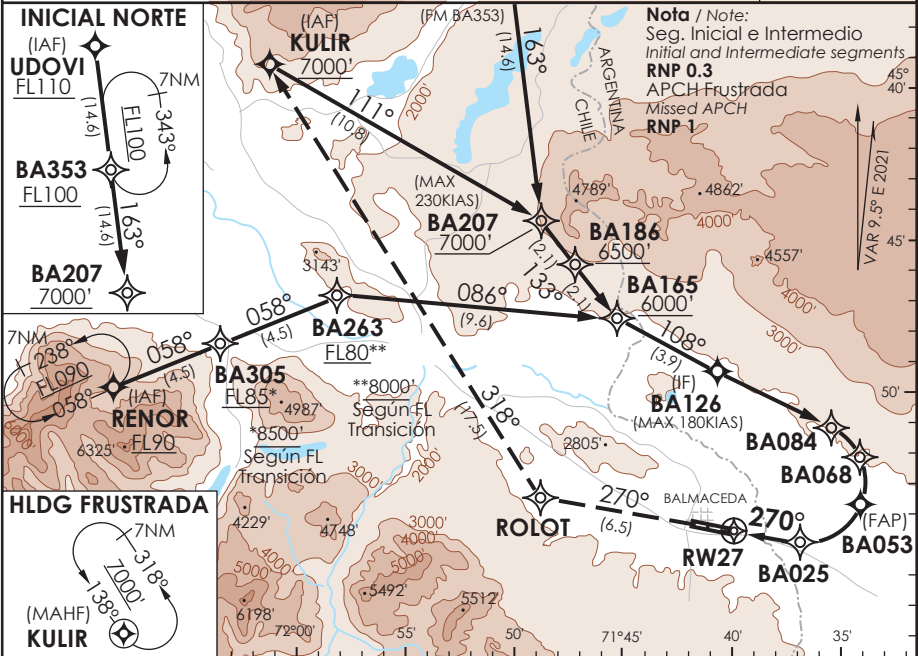
SURTA 2B: From SURTA direct to BA331 - RENOR. Cross SURTA at or above FL170, BA331 at or above FL110, RENOR at or above FL90, then according to ATC clearance.

DASA / SECCION AIS-WP

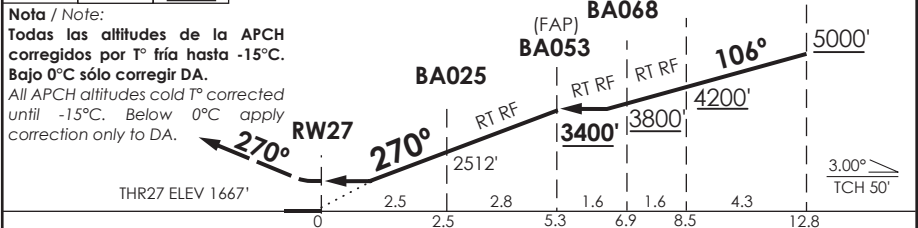
AD. BALMACEDA
BALMACEDA - CHILE

SCBA IAC 7
RNAV (RNP) X Rwy 27

APP PUERTO MONIT RADAR Puerto Montt Approach	128.3 / 119.7	TORRE BALMACEDA Balmaceda Tower	118.5	CONTROL TERRESTRE Ground Control	121.9
RNAV	FINAL APCH CRS 270°	MNM ALT BA053 3400'	DA/H ver mínimos DA/H refer to minimums	AD Elev 1722' THR 27 Elev 1667'	<div style="border: 1px solid black; border-radius: 50%; width: 60px; height: 60px; margin: 0 auto; display: flex; align-items: center; justify-content: center;"> 11300 FT </div>
APCH FRUSTRADA: Ascenso 7000' vía ROLOT directo KULIR, ingrese en HLDG 138° izquierdo o según autorización ATC. Missed Apch: Climb to 7000' via ROLOT direct to KULIR, enter on HLDG 138° left or according to ATC clearance.					
					MSA 25 NM RW27



↑ TR270° ROLOT KULIR 7000'	Nivel de Transición por ATC Transition Level by ATC	(IF) BA084 BA126
---	--	------------------------



C A T E G O R Í A	DIRECTO RWY 27 Straight in RWY 27				RNP AR RWY 27 SCBA: Requiere RF. Para sistemas Baro VNAV no compensados proc NA bajo -15°C o sobre 42°C. Requiere aprobación RNP AR APCH RF required. For uncompensated Baro VNAV systems procedure NA below -15°C or above 42°C. RNP AR APCH approval required		
	RNP 0.1 DA 2000'(333')		RNP 0.3 DA 2170'(503')				
	SSALR	WO SSALR	SSALR	WO SSALR			
A							
B	800m	1.6 Km	1.6 Km	2.4 Km			
C							
D							
Veloc. Terrestre Kts		80	100	120	140	160	MNM ALTN RNP 0.30: VER PAG GEN 2.19 See pag 2.19 RQR AUTORIZACIÓN ESPECIAL PARA ACFT Y TRIPULACIÓN SPECIAL ACFT AND AIRCREW AUTHORIZATION RQRD
Angulo DES 3,0° FPM		425'	531'	637'	743'	849'	
MAPT en DA							

DASA / SECCION AS-WAP