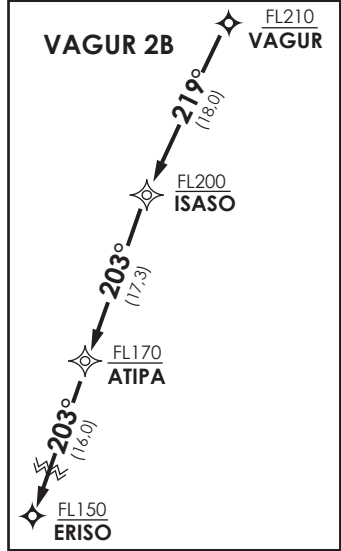


**ARICA**  
 APP 119.9  
 TWR 118.5

**VAGUR 2B**

**FUERA DE ESCALA**



**Notas**  
 1.- Requiere aprobación RNAV 1 ó RNP1  
 2.- Requiere GNSS

**Notes**  
 1.- RNAV 1 or RNP 1 approval required  
 2.- GNSS required

**REPUK 2B**

Nivel de Transición by ATC  
 Transition Level by ATC

No se ajusta a escala / Not to scale

**STAR VAGUR 2B / REPUK 2B RNAV**

**VAGUR 2B:** Desde VAGUR proceder via ISASO - ATIPA - ERISO, viraje dercha para continuar via AR390 - AR270 - AR220 - BOLUN. Cruzar VAGUR FL210 o superior, ISASO FL200 o superior, ATIPA FL 170 o superior, ERISO FL150 o superior, AR390 FL120 o superior, AR270 7000 Ft o superior, AR220 6000 Ft o superior, BOLUN 5000 FT o superior, luego según autorización ATC.

**VAGUR 2B:** From VAGUR proceed via ISASO - ATIPA - ERISO, right tur to continue via AR390 - AR270 - AR220 - BOLUN. Cross VAGUR at or above FL210, ISASO at or above FL200, ATIPA at or above FL170, ERISO at or above FL150, AR390 at or above FL120, AR270 at or above 7000 Ft, AR220 at or above 6000 Ft, BOLUN at or above 5000FT, then according to ATC clearance.

**REPUK 2B:** Desde REPUK proceder via VUKOD - SIGOR. Cruzar VUKOD 8000 Ft o superior, SIGOR 3500 FT o superior, luego según autorización ATC.

**REPUK 2B :** From REPUK proceed via VUKOD - SIGOR. Cross VUKOD at or above 8000 Ft, SIGOR at or above 3500 FT then according to ATC clearance.