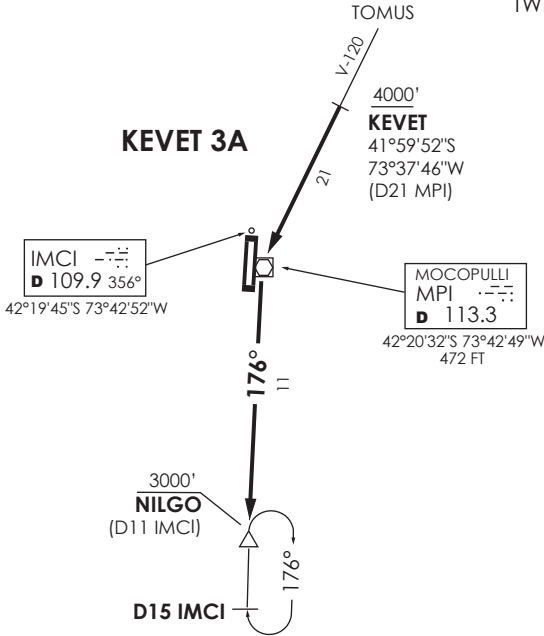


VAR 8.7° E 2024

| | |
|-------------------|-------|
| PTO. MONTT | |
| RDR | 120.1 |
| CHILOÉ | |
| TWR | 118.4 |



Nivel de Transición por ATC
 Transition Level by ATC

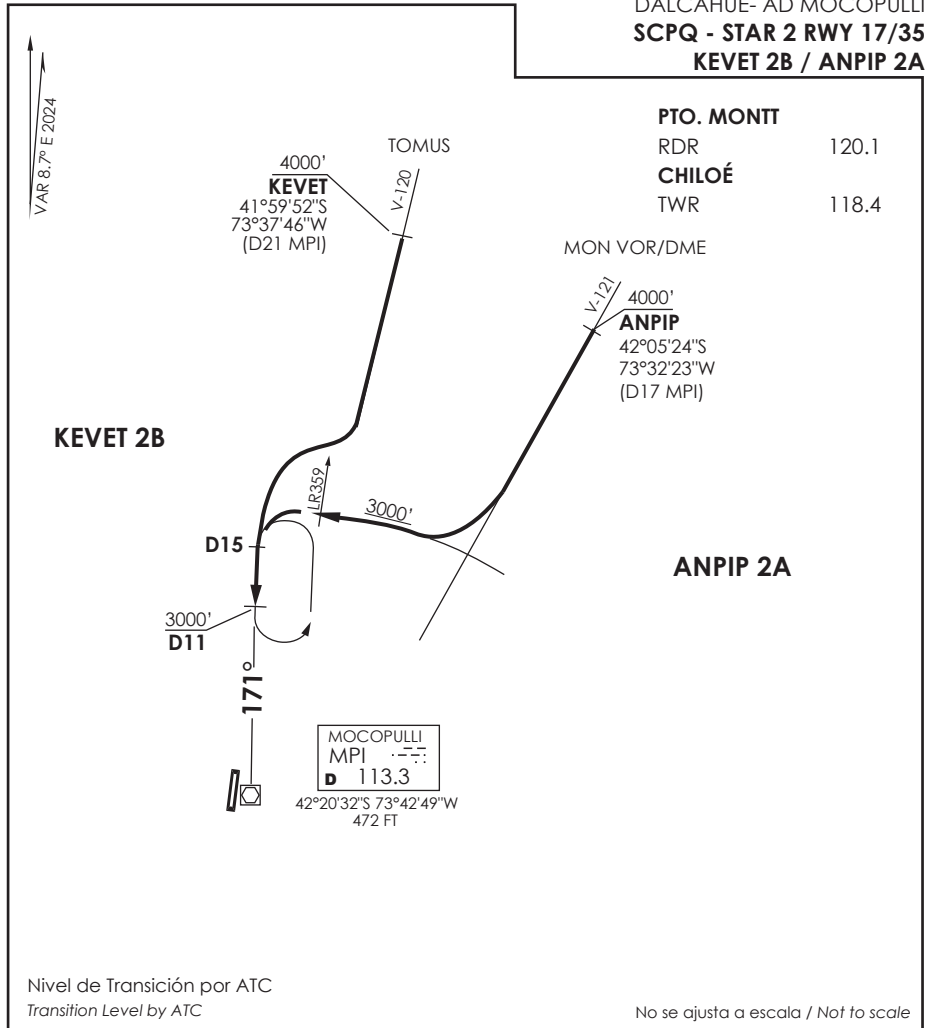
No se ajusta a escala / Not to scale

STAR KEVET 3A

KEVET 3A: Desde KEVET continuar directo a MPI VOR, luego viraje izquierda para interceptar R176 hasta NILGO. Cruzar KEVET a 4000 Ft o superior, NILGO 3000 Ft o superior, luego según autorización ATC.

KEVET 3A: From KEVET continue direct to MPI VOR, then turn left to intercept R176 until NILGO. Cross KEVET at or above 4000 Ft, NILGO at or above 3000FT, then according to ATC clearance.

DALCAHUE- AD MOCOPULLI
SCPQ - STAR 2 RWY 17/35
KEVET 2B / ANPIP 2A



Nivel de Transición por ATC
 Transition Level by ATC

No se ajusta a escala / Not to scale

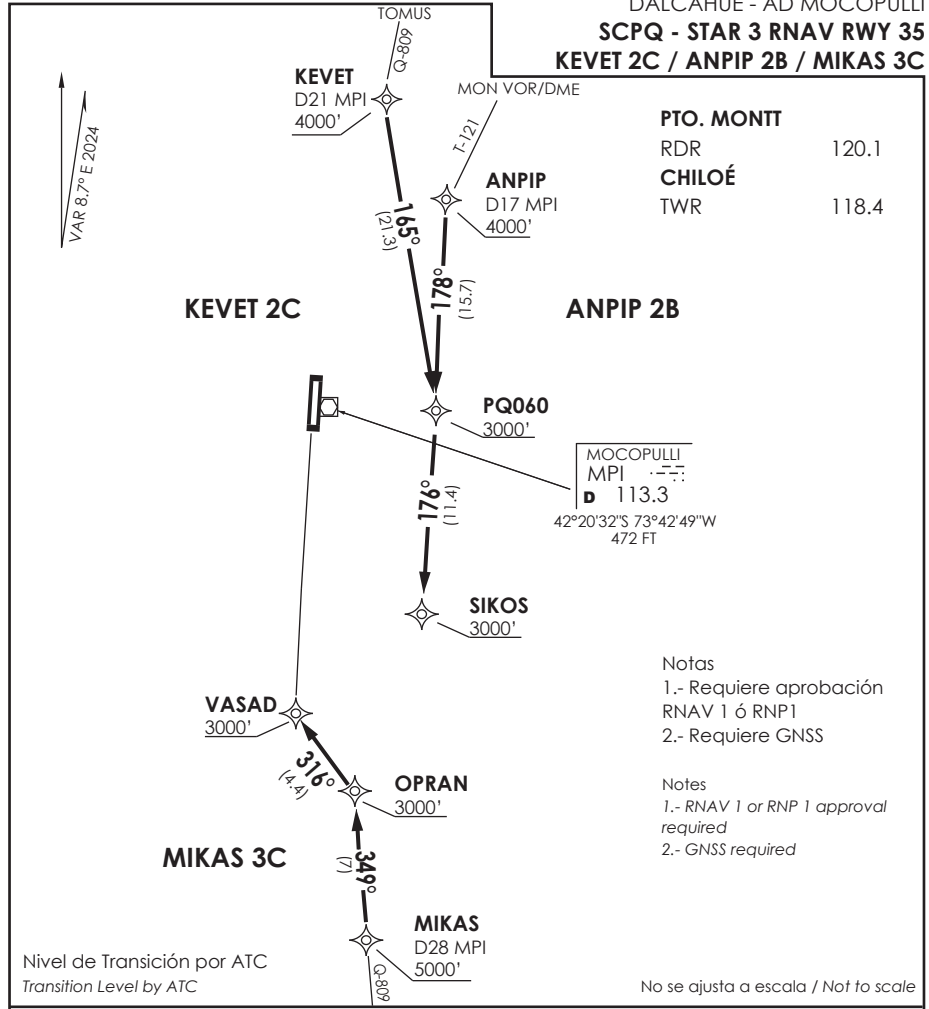
STAR KEVET 2B / ANPIP 2A

KEVET 2B: En KEVET abandonar AWY para interceptar R351 (TR171°) hasta D11 N MPI. Cruce KEVET 4000 Ft o superior, D11 N 3000FT o superior, luego según autorización ATC.

KEVET 2B: At KEVET leave AWY to intercept R351 (TR171°) until D11 N MPI. Cross KEVET at or above 4000 Ft, D11 N at or above 3000FT, then according to ATC clearance.

ANPIP 2A: En ANPIP abandonar AWY para orbitar D15 MPI VOR e interceptar R351 (TR171°) hasta D11 N MPI. Cruce ANPIP 4000 Ft o superior, D11 N 3000FT o superior, luego según autorización ATC.

ANPIP 2A: At ANPIP leave AWY to join D15 MPI VOR and then intercept R351 (TR171°) until D11 N MPI. Cross ANPIP at or above 4000 Ft, D11 N MPI at or above 3000FT, then according to ATC clearance.



| | |
|-------------------|-------|
| PTO. MONTT | |
| RDR | 120.1 |
| CHILOÉ | |
| TWR | 118.4 |

- Notas
- 1.- Requiere aprobación RNAV 1 ó RNP1
 - 2.- Requiere GNSS
- Notas
- 1.- RNAV 1 or RNP 1 approval required
 - 2.- GNSS required

Nivel de Transición por ATC
 Transition Level by ATC

No se ajusta a escala / Not to scale

STAR KEVET 2C/ANPIP 2B/MIKAS 3C RNAV

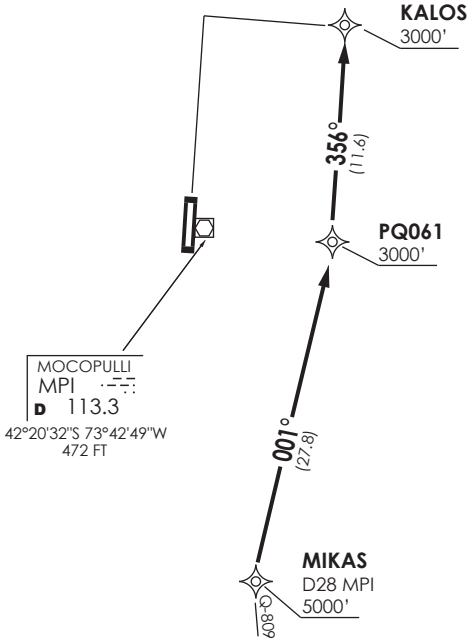
KEVET 2C: Desde KEVET proceder directo a PQ060-SIKOS. Cruzar KEVET a 4000 Ft o superior, PQ060 a 3000FT o superior, SIKOS a 3000FT o superior, luego según autorización ATC.
KEVET 2C: From KEVET proceed direct to PQ060-SIKOS. Cross KEVET at or above 4000 Ft, PQ060 at or above 3000FT, SIKOS at or above 3000FT, then according to ATC clearance.

ANPIP 2B: Desde ANPIP proceder directo a PQ060-SIKOS. Cruzar ANPIP a 4000 Ft o superior, PQ060 a 3000FT o superior, SIKOS a 3000FT o superior, luego según autorización ATC.
ANPIP 2B: From ANPIP proceed direct to PQ060-SIKOS. Cross ANPIP at or above 4000 Ft, PQ060 at or above 3000FT, SIKOS at or above 3000FT, then according to ATC clearance.

MIKAS 3C: Desde MIKAS proceder directo a OPRAN-VASAD. Cruzar MIKAS a 5000 Ft, cruzar OPRAN a 3000FT o superior, VASAD 3000FT o superior, luego según autorización ATC.
MIKAS 3C: From MIKAS proceed direct to OPRAN-VASAD. Cross MIKAS at or above 5000 Ft, OPRAN at or above 3000FT, VASAD at or above 3000FT, then according to ATC clearance.

VAR 8,7° E 2024

| | |
|-------------------|-------|
| PTO. MONTT | |
| RDR | 120.1 |
| CHILOÉ | |
| TWR | 118.4 |



- Notas
- 1.- Requiere aprobación RNAV 1 ó RNP 1
 - 2.- Requiere GNSS

- Notes
- 1.- RNAV 1 or RNP 1 approval required
 - 2.- GNSS required

Nivel de Transición por ATC
 Transition Level by ATC

No se ajusta a escala / Not to scale

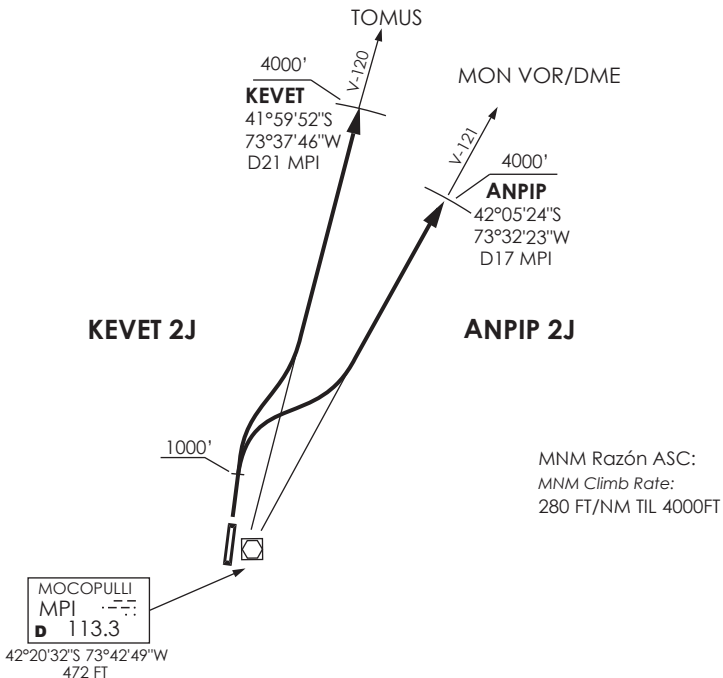
STAR MIKAS 3D RNAV

MIKAS 3D: En AWY Q-809, desde MIKAS proceder directo a PQ061-KALOS. Cruzar MIKAS a 5000 Ft o superior, cruzar PQ061 a 3000FT o superior, KALOS a 3000FT, luego según autorización ATC.

MIKAS 3D: On AWY Q-809, from MIKAS proceed direct to PQ061-KALOS. Cross MIKAS at or above 5000 Ft, cross PQ061 at or above 3000FT, KALOS at or above 3000FT, then according to ATC clearance.

| | |
|-------------------|-------|
| CHILLOÉ | |
| GNDC | 121.6 |
| TWR | 118.4 |
| PTO. MONTT | |
| RDR | 120.1 |

↑
 VAR 8.7° E 2024



Altitud de Transición 10000FT
 Transition Altitude 10000FT

No se ajusta a escala / Not to scale

KEVET 2J/ANPIP 2J

DEP RWY 35: Ascender en RWY HDG hasta 1000 FT, luego...

TAKE OFF RWY 35: Climb on RWY HDG until 1000 FT, then...

KEVET 2J: Viraje derecha para interceptar AWY V-120. Cruzar KEVET 4000 Ft o superior, luego según autorización ATC.

KEVET 2J: Right turn to intercept AWY V-120. Cross KEVET at or above 4000 Ft, then according to ATC clearance.

ANPIP 2J: Viraje derecha para interceptar AWY V-121. Cruzar ANPIP 4000 Ft o superior, luego según autorización ATC.

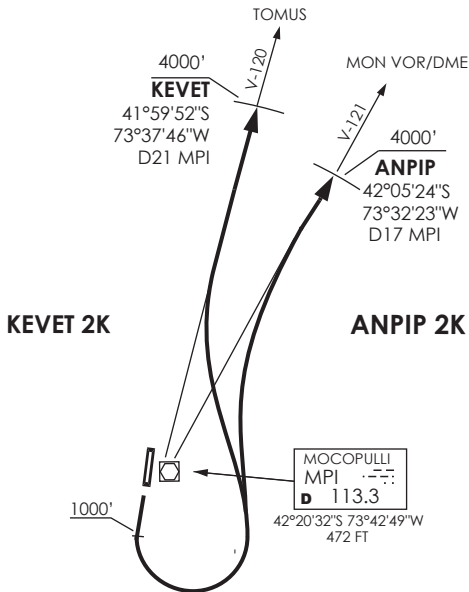
ANPIP 2J: Right turn to intercept AWY V-121. Cross ANPIP at or above 4000 Ft, then according to ATC clearance.

DASA / SECCION AIS-MAP

CHILOÉ

GNDG 121.6
 TWR 118.4
PTO. MONTT
 RDR 120.1

↑
 VAR 8.7° E 2024



MNM Razón ASC:
 MNM Climb Rate:
 280 FT/NM TIL 4000 FT

Altitud de Transición 10000FT
 Transition Altitude 10000FT

No se ajusta a escala / Not to scale

KEVET 2K/ANPIP 2K

DEP RWY 17: Ascender en RWY HDG hasta 1000 FT, luego...

TAKE OFF RWY 17: Climb on RWY HDG until 1000 FT, then...

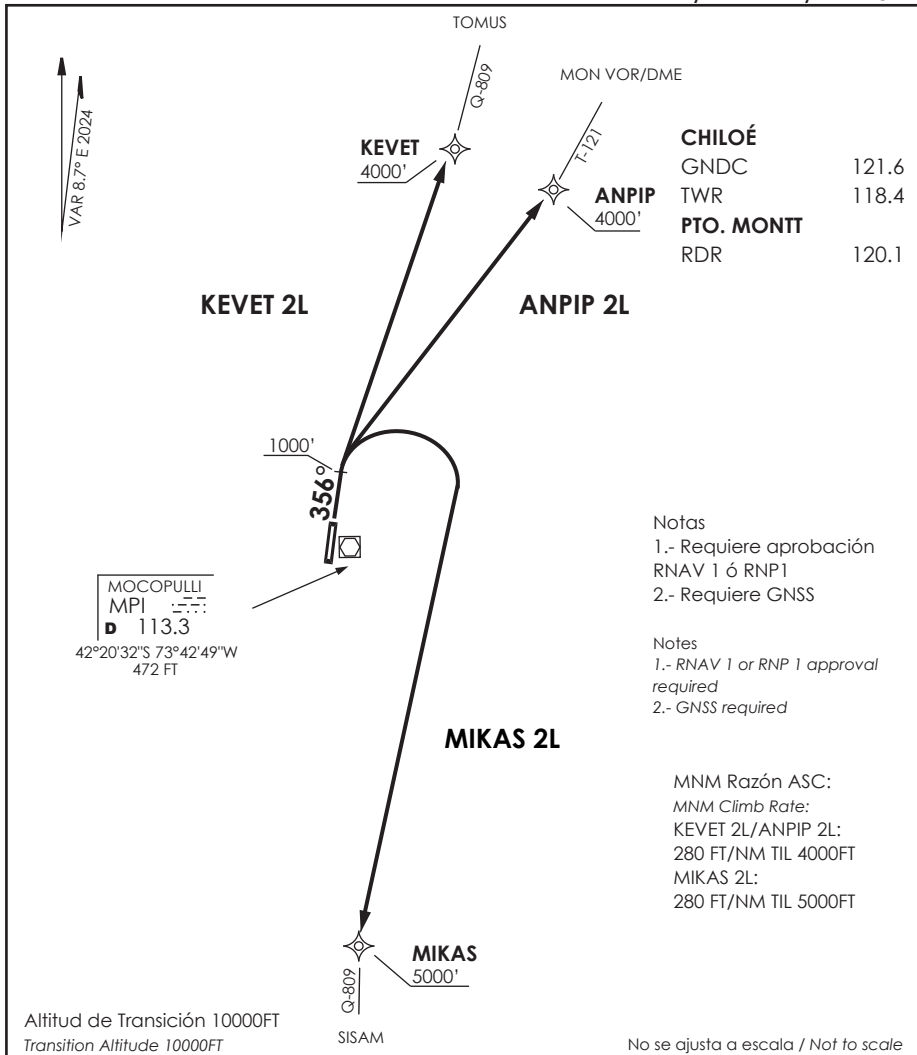
KEVET 2K: Viraje izquierda para interceptar AWY V-120. Cruzar KEVET 4000 Ft o superior, luego según autorización ATC.

KEVET 2K: Left turn to intercept AWY V-120. Cross KEVET at or above 4000 Ft, then according to ATC clearance.

ANPIP 2K: Viraje izquierda para interceptar AWY V-121. Cruzar ANPIP 4000 Ft o superior, luego según autorización ATC.

ANPIP 2K: Left turn to intercept AWY V-121. Cross ANPIP at or above 4000 Ft, then according to ATC clearance.

DASA / SECCION AIS-MAP



KEVET 2L/ANPIP 2L/MIKAS 2L RNAV

DEP RWY 35: Ascender en TR 356° hasta 1000 FT, posterior...

TAKE OFF RWY 35: Climb on TR 356° until 1000 FT, then...

KEVET 2L: Viraje derecha directo a KEVET para interceptar AWY Q-809. Cruzar KEVET a 4000 Ft o superior, luego según autorización ATC.

KEVET 2L: Right turn direct to KEVET to intercept AWY Q-809. Cross KEVET at or above 4000 Ft, then according to ATC clearance.

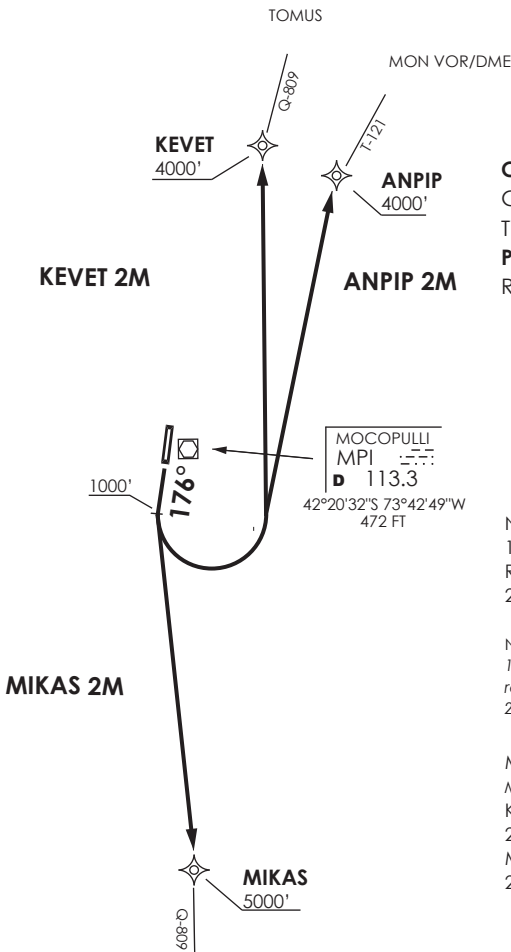
ANPIP 2L: Viraje derecha directo a ANPIP para interceptar AWY T-121. Cruzar ANPIP a 4000 Ft o superior, luego según autorización ATC.

ANPIP 2L: Right turn direct to ANPIP to intercept AWY T-121. Cross ANPIP at or above 4000 Ft, then according to ATC clearance.

MIKAS 2L: Viraje derecha directo a MIKAS para interceptar AWY Q-809. Cruzar MIKAS a 5000 Ft o superior, luego según autorización ATC.

MIKAS 2L: Right turn direct to MIKAS to intercept AWY Q-809. Cross MIKAS at or above 5000 Ft, then according to ATC clearance.

VAR 8.7° E 2024



| | |
|-------------------|-------|
| CHILOÉ | |
| GNDC | 121.6 |
| TWR | 118.4 |
| PTO. MONTT | |
| RDR | 120.1 |

MOCOPULLI
 MPI
 D 113.3
 42°20'32"S 73°42'49"W
 472 FT

- Notas
- 1.- Requiere aprobación RNAV 1 ó RNP1
 - 2.- Requiere GNSS

- Notas
- 1.- RNAV 1 or RNP 1 approval required
 - 2.- GNSS required

MNM Razón ASC:
 MNM Climb Rate:
 KEVET 2M/ANPIP 2M:
 280 FT/NM TIL 4000FT
 MIKAS 2M:
 280 FT/NM TIL 5000FT

Altitud de Transición 10000FT
 Transition Altitude 10000FT

SISAM

No se ajusta a escala / Not to scale

KEVET 2M/ANPIP 2M/MIKAS 2M RNAV

DEP RWY 17: Ascender en TR 176° hasta 1000 FT, posterior...

TAKE OFF RWY 17: Climb on TR 176° until 1000 FT, then...

KEVET 2M: Viraje izquierda directo a KEVET para interceptar AWY Q-809. Cruzar KEVET a 4000 Ft o superior, luego según autorización ATC.

KEVET 2M: Left turn direct to KEVET to intercept AWY Q-809. Cross KEVET at or above 4000 Ft, then according to ATC clearance.

ANPIP 2M: Viraje izquierda directo a ANPIP para interceptar AWY T-121. Cruzar ANPIP a 4000 Ft o superior, luego según autorización ATC.

ANPIP 2M: Left turn direct to ANPIP to intercept AWY T-121. Cross ANPIP at or above 4000 Ft, then according to ATC clearance.

MIKAS 2M: Viraje izquierda directo a MIKAS para interceptar AWY Q-809. Cruzar MIKAS 5000 Ft o superior, luego según autorización ATC.

MIKAS 2M: Left turn direct to MIKAS to intercept AWY Q-809. Cross MIKAS at or above 5000 Ft, then according to ATC clearance.

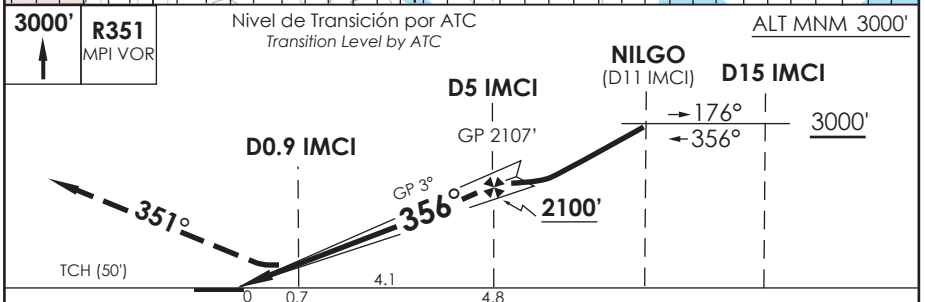
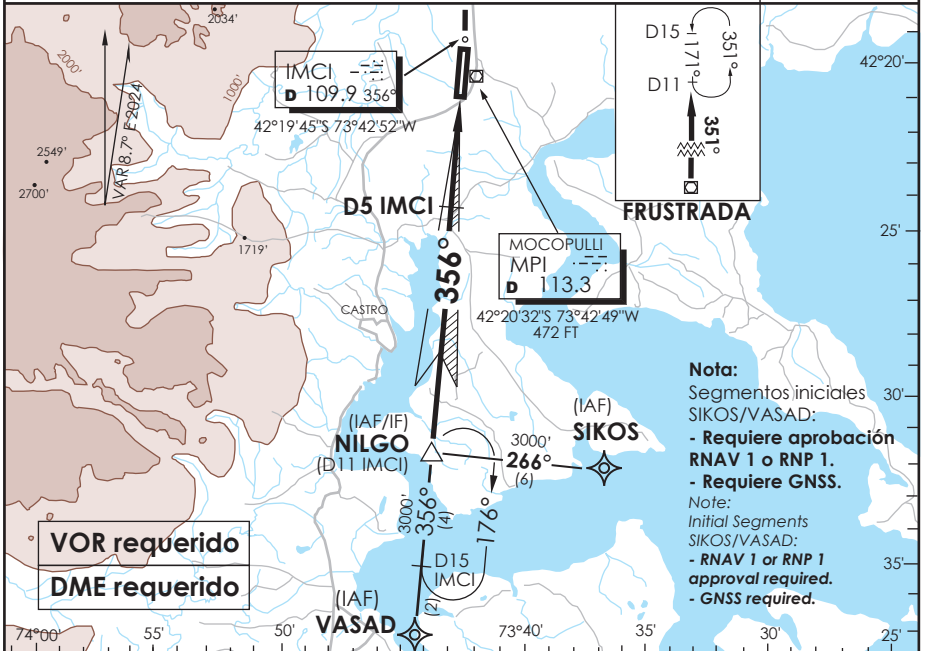
AD. MOCOPULLI DALCAHUE - CHILE

SCPQ IAC 1
ILS o LOC Rwy 35

| | | | | | |
|---|-------------------------------|------------------------------------|----------------------------|---|--------------------------|
| APP PUERTO MONTI RADAR Puerto Montt Radar Approach 120.1 | | CHILOÉ Torre CHILOÉ Tower 118.4 | | CONTROL TERRESTRE Ground Control 121.6 | |
| LOC 109.9 | FINAL APCH CRS 356° | MNM ALT D5 2100' | DA(H) 790'(262') | AD Elev. 528' | THR 35 Elev. 528' |

APCH FRUSTRADA: Ascenso 3000FT R351 VOR MPI, ingreso HLDG BTN D11 y D15 N 171° izquierda o según autorización ATC.
Missed Apch: Climb to 3000FT on R351 MPI VOR, enter on HLDG BTN D11 and D15 N 171° left or according to ATC clearance.

4100 FT
MSA 25 NM MPI



| CATEGORÍA | DIRECTO RWY 35 Straight in RWY 35 * | | | | CIRCULANDO Circling | ALTN Alternate Minimums |
|-----------|-------------------------------------|----------|------------------------|----------|------------------------|---|
| | ILS DA 790' (262') | | LOC MDA 940' (412') | | | |
| | SSALF | WO SSALF | SSALF | WO SSALF | | |
| A | | | 1.2 Km | 1.6 Km | 980' (452') | VER PAG. GEN 2.19 SEE PAGE GEN 2.19 |
| B | 1.2 Km | 1.6 Km | 1.6 Km | 2.0 Km | 1.6 Km | |
| C | | | | | 2.4 Km | |
| D | | | | | 3.2 Km | |

* WO IMCI DME PROC NA
Procedure not authorized without IMCI DME

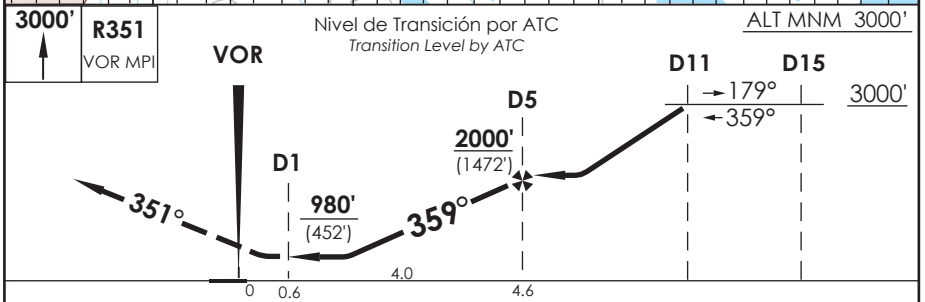
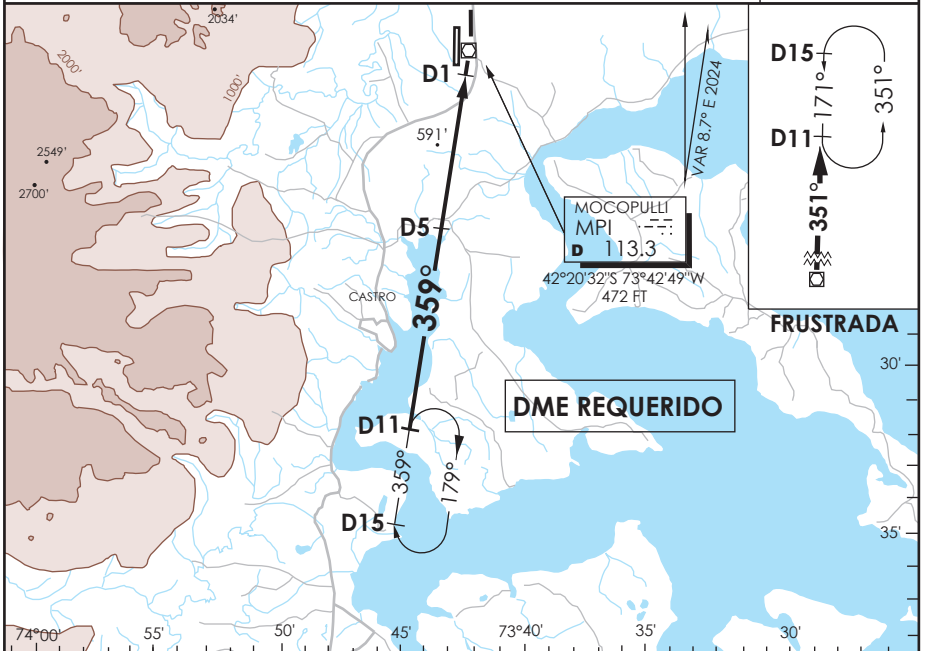
| | | | | | |
|-------------------------|------|------|------|------|------|
| Veloc. Terrestre Kts | 80 | 100 | 120 | 140 | 160 |
| GP 3.0° FPM | 425' | 531' | 637' | 743' | 849' |
| Dist. FAF a MAPT 4.1 NM | 3:05 | 2:28 | 2:03 | 1:45 | 1:32 |

DASA / SECCION AS-MAP

AD. MOCOPULLI DALCAHUE - CHILE

SCPQ IAC 2
VOR Rwy 35

| | | | | | | |
|--|-------------------------------|------------------------------------|------------------------------------|------------------|---|---|
| APP PUERTO MONTI RADAR Puerto Montt Radar Approach 120.1 | | | CHILOÉ Torre CHILOÉ Tower 118.4 | | CONTROL TERRESTRE Ground Control 121.6 | |
| VOR MPI 113.3 | FINAL APCH CRS 359° | MNM ALT D5 2000' (1472') | MDA 980' (452') | AD Elev. 528' | THR 35 Elev. 528' |  4100 FT MSA 25 NM MPI |
| APCH FRUSTRADA: Ascenso 3000FT R351 VOR MPI, ingrese HLDG BTN D11 y D15 N 171° izquierda o según autorización ATC. Missed Apch: climb to 3000FT on R351 MPI VOR, enter on HLDG BTN D11 and D15 N 171° left or according to ATC clearance. | | | | | | |



| | | | | | |
|-----------|-----------------------------------|--------|------------------------|----------------------------|--------|
| CATEGORÍA | DIRECTO RWY 35 Straight in RWY 35 | | CIRCULANDO Circling | ALTN Alternate Minimums | |
| | MDA 980' (452') | | | | |
| | | SSALF | WO SSALF | | |
| | A | 1.2 Km | 1.6 Km | 980' (452') | 1.6 Km |
| B | 2.0 Km | 2.4 Km | 1120' (592') | 2.4 Km | |
| C | | | 3.2 Km | | |
| D | | | SEE PAGE GEN 2.19 | | |

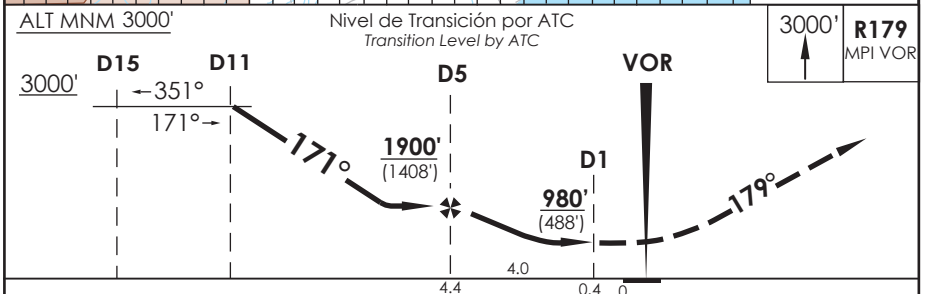
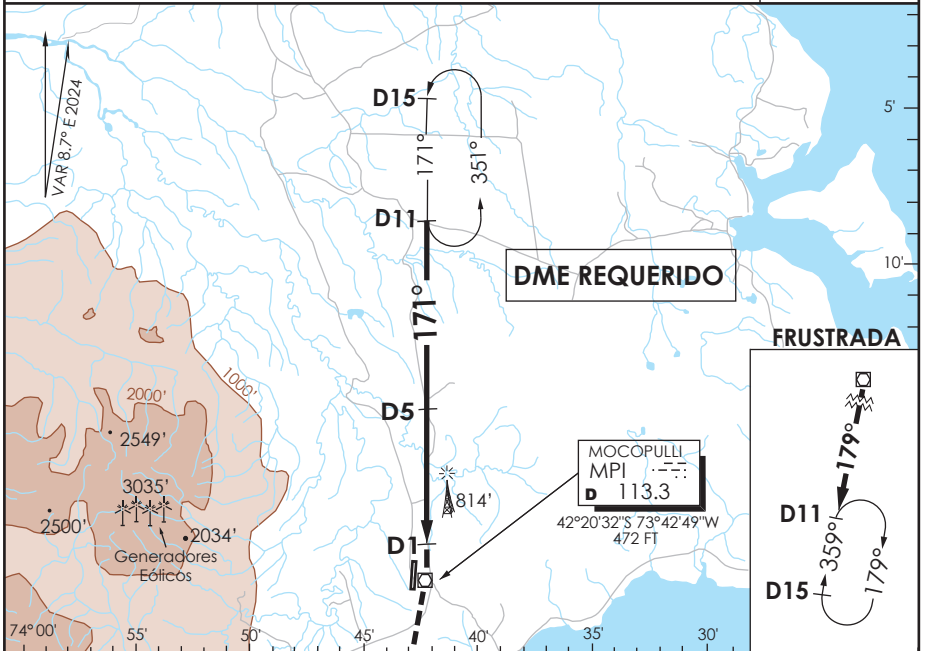
| | | | | | |
|--------------------------|------|------|------|------|------|
| Veloc. Terrestre Kts | 80 | 100 | 120 | 140 | 160 |
| Angulo DES 3.0° FPM | 425' | 531' | 637' | 743' | 849' |
| MIN:SEC (FAFTO MAPT 4.0) | 3:00 | 2:24 | 2:00 | 1:43 | 1:30 |

DASA / SECCION AS-MAP

AD. MOCOPULLI DALCAHUE - CHILE

SCPQ IAC 3
VOR Rwy 17

| | | | | | |
|--|-------------------------------|------------------------------------|---------------------------|---|--------------------------|
| APP PUERTO MONTI RADAR Puerto Montt Radar Approach 120.1 | | CHILOÉ Torre CHILOÉ Tower 118.4 | | CONTROL TERRESTRE Ground Control 121.6 | |
| VOR MPI 113.3 | FINAL APCH CRS 171° | MNM ALT D5 1900' (1408') | MDA 980' (488') | AD Elev. THR 17 Elev. 528' | 4100 FT MSA 25 NM MPI |
| APCH FRUSTRADA: Ascenso 3000FT R179 VOR MPI, ingreso HLDG BTN D11 y D15 S 359° derecho o según autorización ATC. Missed Apch: Climb to 3000FT on R179 MPI VOR/DME, enter on HLDG BTN D11 and D15 S 359°, right or according to ATC clearance. | | | | | |



| | | | |
|---|-----------------------------------|---------------------|--|
| A | DIRECTO RWY 17 Straight in RWY 17 | CIRCULANDO Circling | ALTN Alternate Minimums |
| | MDA 980' (488') | | |
| B | 1.6 Km | 980' (452') | VER PAG. GEN 2.19 SEE PAGE GEN 2.19 |
| C | | 1120' (592') | |
| D | 2.4 Km | 1.6 Km | |
| | | 2.4 Km | |
| | | 3.2 Km | |

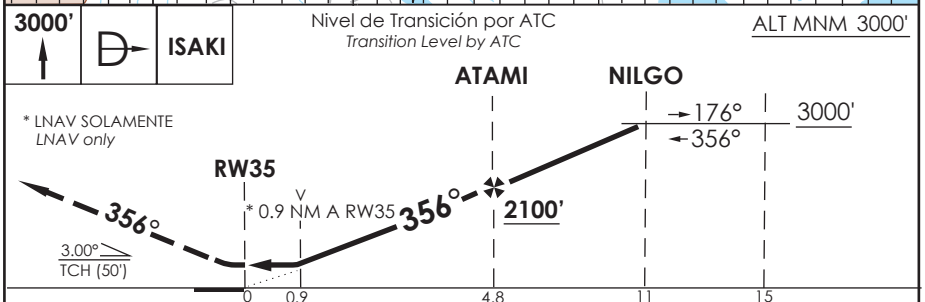
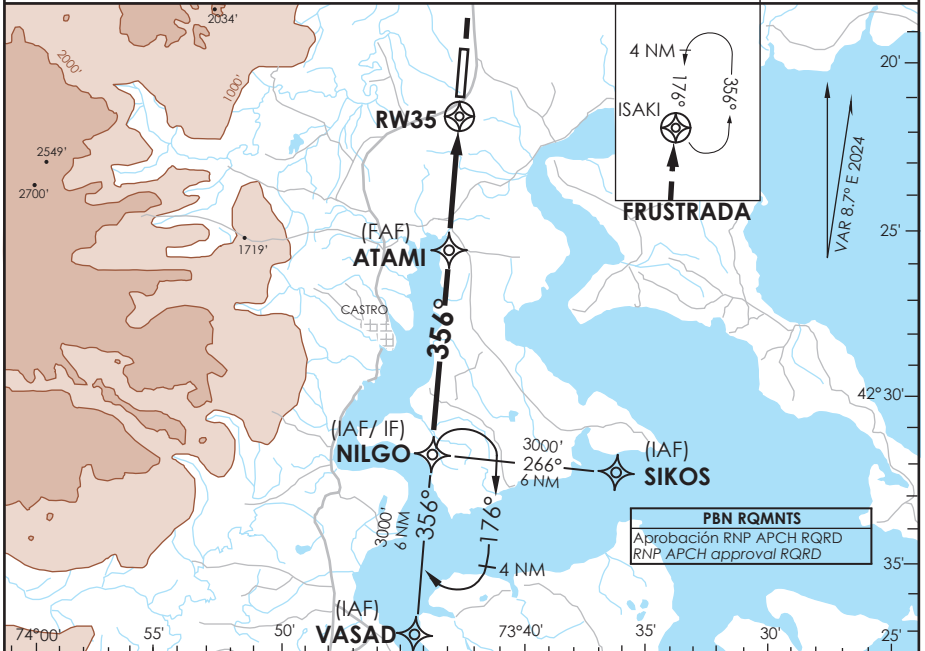
| | | | | | |
|---------------------------|------|------|------|------|------|
| Veloc. Terrestre Kts | 80 | 100 | 120 | 140 | 160 |
| Angulo DES 3.0° FPM | 425' | 531' | 637' | 743' | 849' |
| MIN:SEC (FAF TO MAP1 4.0) | 3:00 | 2:24 | 2:00 | 1:43 | 1:30 |

DASA / SECCION AS-MAP

AD. MOCOPULLI DALCAHUE - CHILE

SCPQ IAC 4
RNP Rwy 35

| | | | | | |
|---|-------------------------------|------------------------------------|--------------------------------------|---|-----------------------------|
| APP PUERTO MONTI RADAR Puerto Montt Radar Approach 120.1 | | CHILOÉ Torre CHILOÉ Tower 118.4 | | CONTROL TERRESTRE Ground Control 121.6 | |
| RNP | FINAL APCH CRS 356° | MNM ATAMI 2100' | LNAV/VNAV DA(H) 830'(302') | AD Elev. 528' | THR 35 Elev. 528' |
| APCH FRUSTRADA: Ascenso 3000' directo ISAKI, ingreso HLDG 176° izquierda o según autorización ATC. Missed Apch: Climb to 3000' direct to ISAKI, enter on HLDG 176° left or according to ATC clearance. | | | | | 4100 FT |
| MSA 25 NM RW 35 | | | | | |



| | | | | | | |
|-----------|-----------------------------------|----------|-----------------------------|----------|------------------------|---|
| CATEGORÍA | DIRECTO RWY 35 Straight in RWY 35 | | | | CIRCULANDO Circling | ALTN Alternate Minimums |
| | LNAV/VNAV DA 830' (302') | | LNAV MDA 880' (352') | | | |
| | SSALF | WO SSALF | SSALF | WO SSALF | | |
| A | | | | | 880' (352') | VER PAG. GEN 2.19 SEE PAGE GEN 2.19 |
| B | | | | | 1.6 Km | |
| C | 1.2 Km | 1.6 Km | 1.2 Km | 1.6 Km | 1120' (592') | |
| D | | | | | 3.2 Km | |

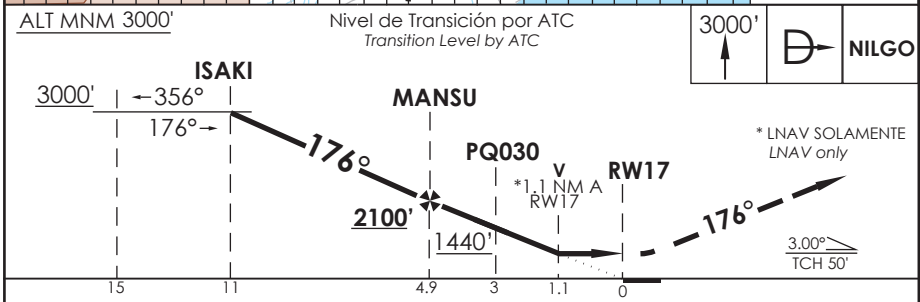
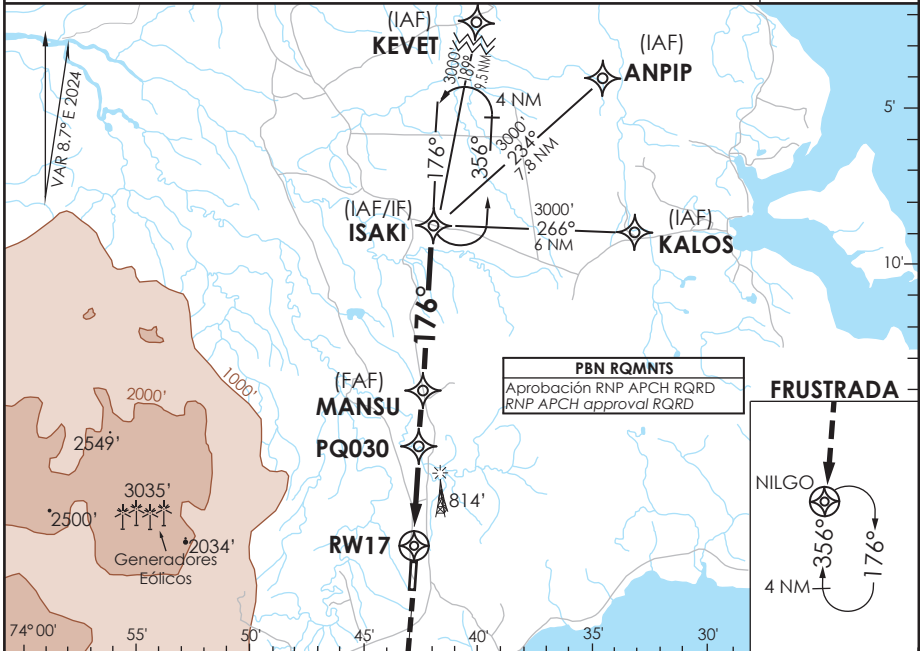
| | | | | | |
|--|------|------|------|------|------|
| Para sistemas Baro VNAV no compensados PROC BARO-VNAV NA BLW -10°C ó ABV 47°C | | | | | |
| Veloc. Terrestre Kts | 80 | 100 | 120 | 140 | 160 |
| Angulo DES 3° FPM | 425' | 531' | 637' | 743' | 849' |
| MAPt en RW35 | | | | | |

DASA / SECCION AS-MAP

AD. MOCOPULLI DALCAHUE - CHILE

SCPQ IAC 5
RNP Rwy 17

| | | | | | |
|--|-------------------------------|------------------------------------|---------------------------------------|---|----------------------------|
| APP PUERTO MONTT RADAR Puerto Montt Radar Approach 120.1 | | CHILOÉ Torre CHILOÉ Tower 118.4 | | CONTROL TERRESTRE Ground Control 121.6 | |
| RNP | FINAL APCH CRS 176° | MNM MANSU 2100' | LNAV/VNAV DA(H) 880' (388') | AD Elev. 528' THR 17 Elev. 492' | 4100 FT MSA 25 NM RW 17 |
| APCH FRUSTRADA: Ascenso 3000' directo NILGO, ingrese HLDG 356° derecho o según autorización ATC. Missed Apch: Climb to 3000' direct to NILGO, enter on HLDG 356° right or according to ATC clearance. | | | | | |



| CATEGORÍA | DIRECTO RWY 17 Straight in RWY 17 | | CIRCULANDO Circling | ALTN Alternate Minimums |
|-----------|-----------------------------------|----------------------|---------------------|-------------------------|
| | LNAV/VNAV DA 880' (388') | LNAV MDA 880' (388') | | |
| A | 1.6 Km | 1.6 Km | 880' (352') | VER PAG. GEN 2.19 |
| B | | | 1.6 Km | |
| C | 2.0 Km | 2.0 Km | 1120' (592') | SEE PAGE GEN 2.19 |
| D | | | 2.4 Km | |

Para sistemas Baro VNAV no compensados
PROC BARO-VNAV NA BLW -10°C ó ABV 47°C

| | | | | | |
|----------------------|------|------|------|------|------|
| Veloc. Terrestre Kts | 80 | 100 | 120 | 140 | 160 |
| Angulo DES 3° FPM | 425' | 531' | 637' | 743' | 849' |
| MÁP en RW17 | | | | | |

DASA / SECCION AS-MAP

DALCAHUE / AD MOCOPULLI - SCPQ STAR 3

| PROCEDIMIENTOS DE LLEGADA RNAV / RNAV ARRIVAL PROCEDURES | | | | | | | | | |
|--|-----------|--------------------------|----|-------------------|-----------|------|----------|----------------|----------------------|
| (Esta información complementa a las cartillas publicadas en la AIP Chile VOL II / This information complements the charts published in the AIP Chile VOL II) | | | | | | | | | |
| STAR 3 RWY 35 KEVET 2C | | | | | | | | | |
| NR SERIE | PATH TERM | PUNTO DE RECORRIDO (WPT) | FO | COURSE/TRACK °M/T | DIST (NM) | TURN | ALTITUD | REST VELOCIDAD | NAV |
| 10 | IF | KEVET | - | - | - | - | 4000 FT+ | - | RNAV 1 ó RNP 1 |
| 20 | TF | PQ060 | - | 165° (174,18) | 21,26 | - | 3000 FT+ | - | |
| 30 | TF | SIKOS | - | 176° (184,64) | 11,43 | - | 3000 FT+ | - | |
| STAR 3 RWY 35 ANPIP 2B | | | | | | | | | |
| NR SERIE | PATH TERM | PUNTO DE RECORRIDO (WPT) | FO | COURSE/TRACK °M/T | DIST (NM) | TURN | ALTITUD | REST VELOCIDAD | NAV |
| 10 | IF | ANPIP | - | - | - | - | 4000 FT+ | - | RNAV 1 ó RNP 1 |
| 20 | TF | PQ060 | - | 178° (186,71) | 15,72 | - | 3000 FT+ | - | |
| 30 | TF | SIKOS | - | 176° (184,64) | 11,43 | - | 3000 FT+ | - | |
| STAR 3 RWY 35 MIKAS 3C | | | | | | | | | |
| NR SERIE | PATH TERM | PUNTO DE RECORRIDO (WPT) | FO | COURSE/TRACK °M/T | DIST (NM) | TURN | ALTITUD | REST VELOCIDAD | NAV |
| 10 | IF | MIKAS | - | - | - | - | 5000 FT+ | - | RNAV 1 ó RNP 1 |
| 20 | TF | OPRAN | - | 349° (357,23) | 7 | - | 3000 FT+ | - | |
| 30 | TF | VASAD | - | 316° (324,92) | 4,43 | - | 3000 FT+ | - | |

DALCAHUE / AD MOCOPULLI - SCPQ STAR 4

| PROCEDIMIENTOS DE LLEGADA RNAV / RNAV ARRIVAL PROCEDURES | | | | | | | | | |
|--|--------------|-----------------------------|----|----------------------|--------------|------|----------|-------------------|----------------------|
| (Esta información complementa a las cartillas publicadas en la AIP Chile VOL II / This information complements the charts published in the AIP Chile VOL II) | | | | | | | | | |
| STAR 4 RWY 17 MIKAS 3D | | | | | | | | | |
| NR SERIE | PATH TERM | PUNTO DE RECORRIDO (WPT) | FO | COURSE/TRACK °M/T | DIST (NM) | TURN | ALTITUD | REST VELOCIDAD | NAV |
| 10 | IF | MIKAS | - | - | - | - | 5000 FT+ | - | RNAV 1 ó RNP 1 |
| 20 | TF | PQ061 | - | 001° (009,31) | 27,85 | - | 3000 FT+ | - | |
| 30 | TF | KALOS | - | 356° (004,66) | 11,64 | - | 3000 FT+ | - | |

DALCAHUE / AD MOCOPULLI - SCPQ SID 3

| PROCEDIMIENTOS DE SALIDA RNAV / RNAV DEPARTURE PROCEDURES | | | | | | | | | |
|--|-----------|--------------------------|----|-------------------|-----------|------|----------|----------------|----------------------|
| (Esta información complementa a las cartillas publicadas en la AIP Chile VOL II / This information complements the charts published in the AIP Chile VOL II) | | | | | | | | | |
| SID 3 RWY 35 KEVET 2L | | | | | | | | | |
| NR SERIE | PATH TERM | PUNTO DE RECORRIDO (WPT) | FO | COURSE/TRACK °M/T | DIST (NM) | TURN | ALTITUD | REST VELOCIDAD | NAV |
| 10 | CA | - | - | 356° (004,67) | - | - | 1000 FT+ | - | RNAV 1 ó RNP 1 |
| 20 | DF | KEVET | - | - | - | - | 4000 FT+ | - | |
| SID 3 RWY 35 ANPIP 2L | | | | | | | | | |
| NR SERIE | PATH TERM | PUNTO DE RECORRIDO (WPT) | FO | COURSE/TRACK °M/T | DIST (NM) | TURN | ALTITUD | REST VELOCIDAD | NAV |
| 10 | CA | - | - | 356° (004,67) | - | - | 1000 FT+ | - | RNAV 1 ó RNP 1 |
| 20 | DF | ANPIP | - | - | - | - | 4000 FT+ | - | |
| SID 3 RWY 35 MIKAS 2L | | | | | | | | | |
| NR SERIE | PATH TERM | PUNTO DE RECORRIDO (WPT) | FO | COURSE/TRACK °M/T | DIST (NM) | TURN | ALTITUD | REST VELOCIDAD | NAV |
| 10 | CA | - | - | 356° (004,67) | - | - | 1000 FT+ | - | RNAV 1 ó RNP 1 |
| 20 | DF | MIKAS | - | - | - | RT | 5000 FT+ | - | |

DALCAHUE / AD MOCOPULLI - SCPQ SID 4

| PROCEDIMIENTOS DE SALIDA RNAV / RNAV DEPARTURE PROCEDURES | | | | | | | | | |
|--|-----------|--------------------------|----|-------------------|-----------|------|----------|----------------|----------------------|
| (Esta información complementa a las cartillas publicadas en la AIP Chile VOL II / This information complements the charts published in the AIP Chile VOL II) | | | | | | | | | |
| SID 4 RWY 17 KEVET 2M | | | | | | | | | |
| NR SERIE | PATH TERM | PUNTO DE RECORRIDO (WPT) | FO | COURSE/TRACK °M/T | DIST (NM) | TURN | ALTITUD | REST VELOCIDAD | NAV |
| 10 | CA | - | - | 176° (184,67) | - | - | 1000 FT+ | - | RNAV 1 ó RNP 1 |
| 20 | DF | KEVET | - | - | - | LT | 4000 FT+ | - | |
| SID 4 RWY 17 ANPIP 2M | | | | | | | | | |
| NR SERIE | PATH TERM | PUNTO DE RECORRIDO (WPT) | FO | COURSE/TRACK °M/T | DIST (NM) | TURN | ALTITUD | REST VELOCIDAD | NAV |
| 10 | CA | - | - | 176° (184,67) | - | - | 1000 FT+ | - | RNAV 1 ó RNP 1 |
| 20 | DF | ANPIP | - | - | - | LT | 4000 FT+ | - | |
| SID 4 RWY 17 MIKAS 2M | | | | | | | | | |
| NR SERIE | PATH TERM | PUNTO DE RECORRIDO (WPT) | FO | COURSE/TRACK °M/T | DIST (NM) | TURN | ALTITUD | REST VELOCIDAD | NAV |
| 10 | CA | - | - | 176° (184,67) | - | - | 1000 FT+ | - | RNAV 1 ó RNP 1 |
| 20 | DF | MIKAS | - | - | - | - | 5000 FT+ | - | |

DALCAHUE / AD MOCOPULLI - SCPQ IAC 1

| PROCEDIMIENTOS DE APROXIMACIÓN RNP / RNP APPROACH PROCEDURES | | | | | | | | | | | | |
|--|----------|-----------|--------------------------|----|-------------------|-----------|------|----------|----------|-----|-------|-----|
| (Esta información complementa a las cartillas publicadas en la AIP Chile VOL II / This information complements the charts published in the AIP Chile VOL II) | | | | | | | | | | | | |
| IAC 1 ILS o LOC RWY 35 | | | | | | | | | | | | |
| NR SERIE | TRANS ID | PATH TERM | PUNTO DE RECORRIDO (WPT) | FO | COURSE/TRACK °M/T | DIST (NM) | TURN | ALTITUD | REST VEL | VPA | TCH | NAV |
| 10 | | IF | (IAF/IF) NILGO | - | - | - | - | 3000 FT+ | - | - | - | ILS |
| 20 | | CF | (FAP) D5 IMCI | - | 356° | 6 | - | 2100 FT+ | - | - | - | ILS |
| 30 | | CF | (MAPt) RW35 | Y | 356° | 4,8 | - | 578 FT+ | - | 3° | 50 FT | ILS |
| 40 | | CA | - | - | 351° | - | - | 3000 FT+ | - | - | - | VOR |
| | | | | | | | | | | | | |
| 10 | SIKOS | IF | (IAF) SIKOS | - | - | - | - | 3000 FT+ | - | - | - | 1 |
| 20 | SIKOS | TF | (IAF/IF) NILGO | - | 266° (274,58) | 6 | - | 3000 FT+ | - | - | - | 1 |
| | | | | | | | | | | | | |
| 10 | VASAD | IF | (IAF) VASAD | - | - | - | - | 3000 FT+ | - | - | - | 1 |
| 20 | VASAD | TF | (IAF/IF) NILGO | - | 356° (004,70) | 6 | - | 3000 FT+ | - | - | - | 1 |

DALCAHUE / AD MOCOPULLI - SCPQ IAC 4

| PROCEDIMIENTOS DE APROXIMACIÓN RNP / RNP APPROACH PROCEDURES | | | | | | | | | | | | |
|--|----------|-----------|--------------------------|----|-------------------|-----------|------|----------|----------|-----|-------|-----|
| (Esta información complementa a las cartillas publicadas en la AIP Chile VOL II / This information complements the charts published in the AIP Chile VOL II) | | | | | | | | | | | | |
| IAC 4 RNP RWY 35 | | | | | | | | | | | | |
| NR SERIE | TRANS ID | PATH TERM | PUNTO DE RECORRIDO (WPT) | FO | COURSE/TRACK °M/T | DIST (NM) | TURN | ALTITUD | REST VEL | VPA | TCH | NAV |
| 10 | | IF | (IAF/IF) NILGO | - | - | - | - | 3000 FT+ | - | - | - | 1 |
| 20 | | TF | (FAF) ATAMI | - | 356° (004,68) | 6,22 | - | 2100 FT+ | - | - | - | 1 |
| 30 | | TF | (MAPt) RW35 | Y | 356° (004,68) | 4,78 | - | 578 FT+ | - | 3° | 50 FT | 0,3 |
| 40 | | DF | (MAHF) ISAKI | Y | - | - | - | 3000 FT+ | - | - | - | 1 |
| 50 | | HM | (MAHF) ISAKI | - | 176° (184,68) | 4 | - | 3000 FT+ | - | - | - | 1 |
| 10 | SIKOS | IF | (IAF) SIKOS | - | - | - | - | 3000 FT+ | - | - | - | 1 |
| 20 | SIKOS | TF | (IAF/IF) NILGO | - | 266° (274,58) | 6 | - | 3000 FT+ | - | - | - | 1 |
| 10 | VASAD | IF | (IAF) VASAD | - | - | - | - | 3000 FT+ | - | - | - | 1 |
| 20 | VASAD | TF | (IAF/IF) NILGO | - | 356° (004,70) | 6 | - | 3000 FT+ | - | - | - | 1 |

DALCAHUE / AD MOCOPULLI - SCPQ IAC 5

| PROCEDIMIENTOS DE APROXIMACIÓN RNP / RNP APPROACH PROCEDURES | | | | | | | | | | | | |
|--|----------|-----------|--------------------------|----|-------------------|-----------|------|----------|----------|-----|-------|-----|
| (Esta información complementa a las cartillas publicadas en la AIP Chile VOL II / This information complements the charts published in the AIP Chile VOL II) | | | | | | | | | | | | |
| IAC 5 RNP RWY 17 | | | | | | | | | | | | |
| NR SERIE | TRANS ID | PATH TERM | PUNTO DE RECORRIDO (WPT) | FO | COURSE/TRACK °M/T | DIST (NM) | TURN | ALTITUD | REST VEL | VPA | TCH | NAV |
| 10 | | IF | (IAF/IF) ISAKI | - | - | - | - | 3000 FT+ | - | - | - | 1 |
| 20 | | TF | (FAF) MANSU | - | 176° (184,66) | 6,11 | - | 2100 FT+ | - | - | - | 1 |
| 30 | | TF | (SDF) PQ030 | - | 176° (184,66) | 1,89 | - | 1440 FT+ | - | 3° | - | 0,3 |
| 40 | | TF | (MAPt) RW17 | Y | 176° (184,67) | 3 | - | 542 FT+ | - | 3° | 50 FT | 0,3 |
| 50 | | DF | (MAHF) NILGO | Y | - | - | - | 3000 FT+ | - | - | - | 1 |
| 60 | | HM | (MAHF) NILGO | - | 356° (004,67) | 4 | - | 3000 FT+ | - | - | - | 1 |
| 10 | KEVET | IF | (IAF) KEVET | - | - | - | - | 4000 FT+ | - | - | - | 1 |
| 20 | KEVET | TF | (IAF/IF) ISAKI | - | 189° (197,79) | 9,51 | - | 3000 FT+ | - | - | - | 1 |
| 10 | ANPIP | IF | (IAF) ANPIP | - | - | - | - | 4000 FT+ | - | - | - | 1 |
| 20 | ANPIP | TF | (IAF/IF) ISAKI | - | 234° (242,96) | 7,76 | - | 3000 FT+ | - | - | - | 1 |
| 10 | KALOS | IF | (IAF) KALOS | - | - | - | - | 3000 FT+ | - | - | - | 1 |
| 20 | KALOS | TF | (IAF/IF) ISAKI | - | 266° (274,58) | 6 | - | 3000 FT+ | - | - | - | 1 |