

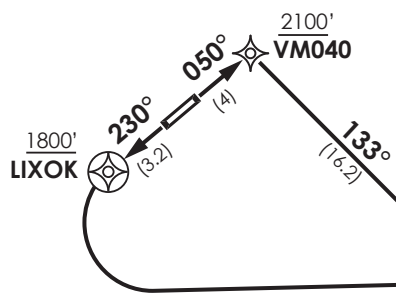
↑
 VAR 2.0° E 2019

VIÑA DEL MAR
 GNDC 121.85
 TWR 118.9
 APP 129.3

SANTIAGO
 CTL 129.1

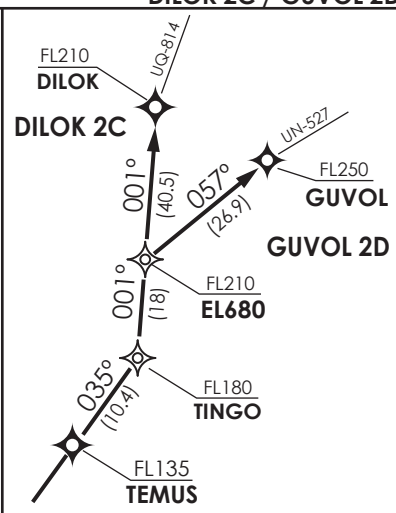
REQUIERE VIGILANCIA ATS DESDE VM200
 ATS SURVEILLANCE REQUIRED FM VM200

MNM Razón ASC:
 MNM Climb Rate:
RWY 05/23: 420 FT/NM BTN DEP - VM200
 BTN EL476 - FL180



Distancia directa:
 Direct distance:
 LIXOK - VM200: 19 NM

Altitud de Transición 10000FT
 Transition Altitude 10000FT



- Notas
- 1.- Requiere aprobación RNAV 1 ó RNP 1
 - 2.- Requiere GNSS
- Notes
- 1.- RNAV 1 or RNP 1 approval required
 - 2.- GNSS required

Not to scale / No se ajusta a escala

DILOK 2C / GUVOL 2D RNAV

DEP RWY 23: Asc en TR230° hasta LIXOK, viraje izquierda DCT VM200. Cruzar LIXOK 1800 FT o superior, VM200 a 10000 FT, luego...
TAKE-OFF RWY 23: Climb on TR230° until LIXOK, turn left direct to VM200. Cross LIXOK at or above 1800 FT, VM200 at 10000 FT, then...

DEP RWY 05: ASC en TR050° hasta VM040, viraje derecha TR133° hasta VM200. Cruzar VM040 2100 FT o superior, VM200 a 10000 FT, luego...
TAKE-OFF RWY 05: Climb on TR050° until VM040, turn right on TR133° to VM200. Cross VM040 at or above 2100FT, cross VM200 at 10000 FT, then...

DILOK 2C: Continúe DCT EL476 - TEMUS - TINGO - EL680 - DILOK. Cruce EL476 a 10000 FT, TEMUS FL135 o superior, TINGO FL180 o superior, EL680 FL210 o superior, DILOK FL 210 o superior.

DILOK 2D: Continue DCT EL476 - TEMUS - TINGO - EL680 - DILOK. Cross EL476 at 10000 FT, TEMUS at or above FL135, TINGO at or above FL180, EL680 at or above FL210, DILOK at or above FL210.

GUVOL 2D: Continúe DCT EL476 - TEMUS - TINGO - EL680 - GUVOL. Cruce EL476 a 10000 FT, TEMUS FL135 o superior, TINGO FL180 o superior, EL680 FL210 o superior, GUVOL FL250 o superior.

GUVOL 2D: Continue DCT EL476 - TEMUS - TINGO - EL680 - GUVOL. Cross EL476 at 10000 FT, TEMUS at or above FL135, TINGO at or above FL180, EL680 at or above FL210, GUVOL at or above FL250.