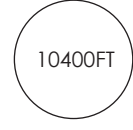
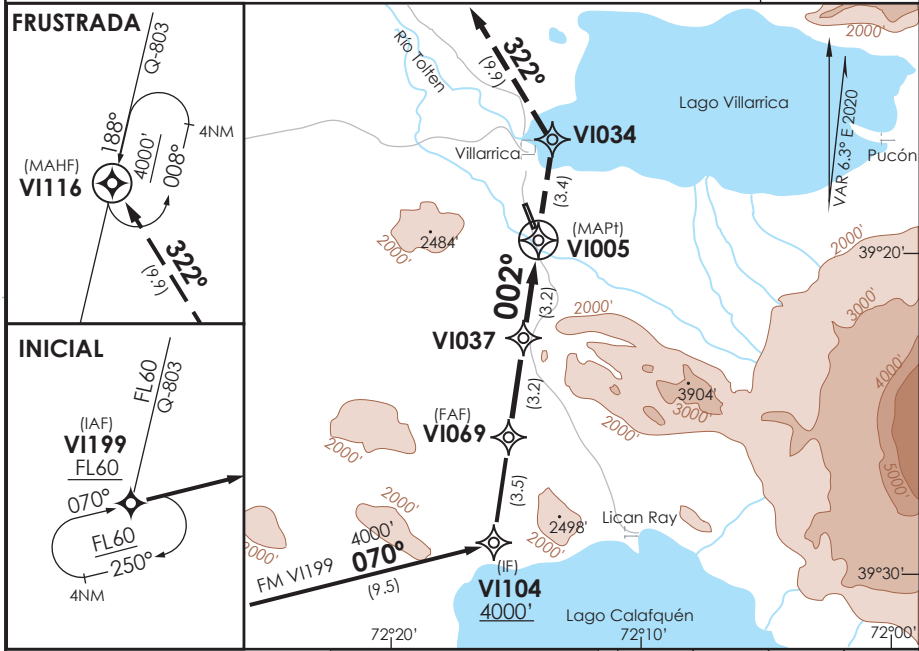


AD. VILLARRICA VILLARRICA - CHILE

SCVI IAC 2 RNAV (GNSS) Rwy 33

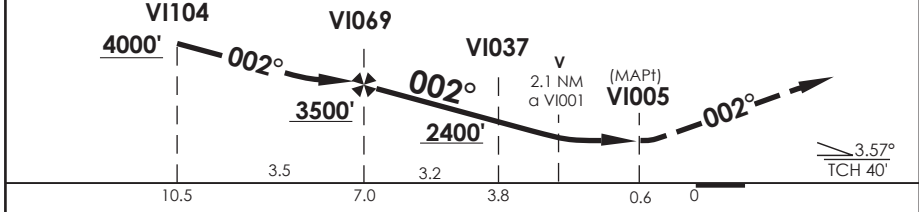
TEMUCO RADAR Temuco Radar		118.7/119.2		TIBA TIBA		118.2	
RNAV	FINAL APCH CRS 002°	MNM ALT V1069 3500'	LNAV MDA (H) 1980' (1029')	AD Elev. 967'	THR 33 Elev. 951'	10400FT 	
APCH FRUSTRADA: ASC 4000' vía V1034 LT TR322° hasta V1116, ingrese en HLDG 188° izquierdo. Missed Apch: Climb to 4000' via V1034 LT TR322° until V1116, enter on HLDG 188° left.							
						MSA 25 NM ARP	



**-Requiere aprobación RNP APCH.
-RNP APCH approval RQRD.**

SFC del Tramo Visual (VSS) vulnerada por árboles cercanos a THR 33.

↑ TR002° V1034 LT 4000' V1116



CATEGORÍA	DIRECTO RWY 33 <i>Straight in RWY 33 *</i>	CIRCULANDO Circling	ALTN Alternate Minimums
	QNH SCQP LNAV MDA 1980' (1029')		
A	5.0 Km	NA	NA
B			

AD NO CERTIFICADO PARA OPS IFR. VER DAP 11 133 Y NOTAS SOBRE CONDICIONES PARA APROXIMAR

Usar ajuste altimétrico de Temuco Radar Freq 118.7 MHz / *Desalineado 30° respecto a RCL
Use Temuco Radar altimeter setting freq 118.7 MHz / * Offset 30° from RWY center line

Veloc. Terrestre Kts	80	100	120	
FPM (ángulo 3.45°)				

Procedimiento no ejecutable sin QNH
Procedure non-executable without QNH

DATA / SECCION AIS-MAP