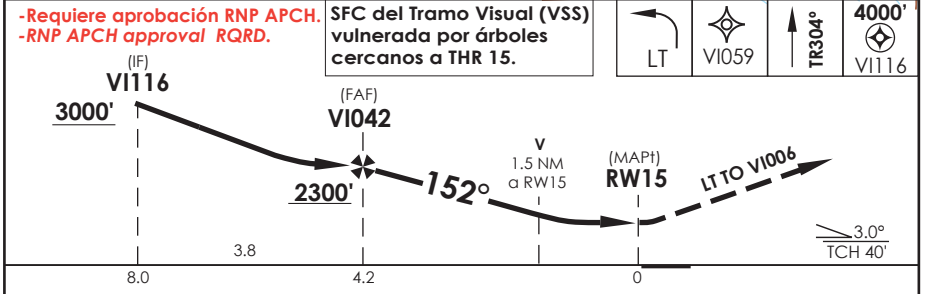
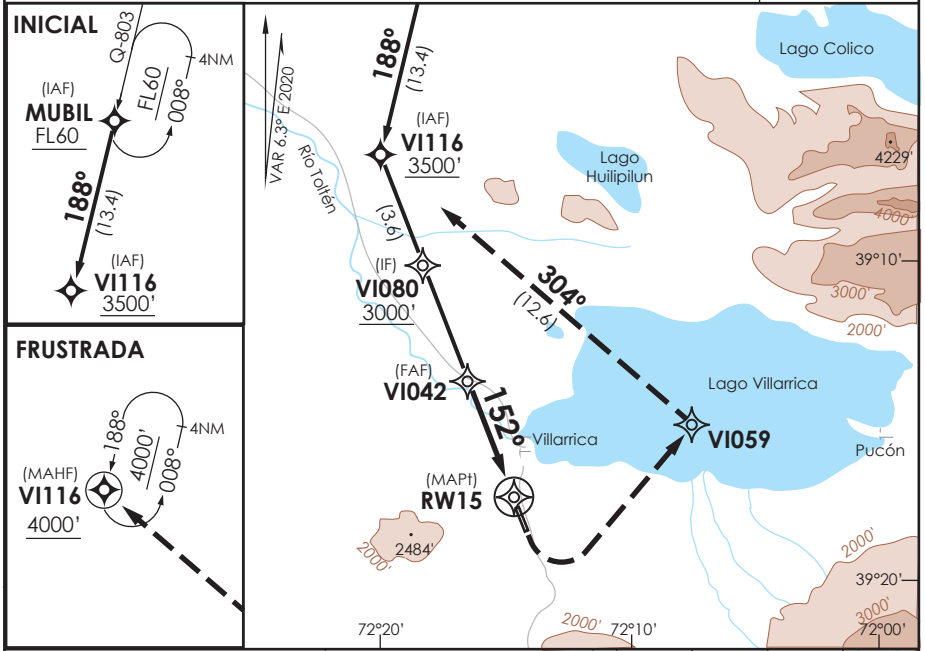


AD. VILLARRICA
VILLARRICA - CHILE

SCVI IAC 1
RNAV (GNSS) Rwy 15

| | | | |
|--|-------------------------------|-------------------------------|-------------------------------------|
| TEMUCO RADAR Temuco Radar | 118.7/119.2 | TIBA TIBA | 118.2 |
| RNAV | FINAL APCH CRS 152° | MNM ALT VIO42 2300' | LNAV MDA (H) 1460' (521') |
| | | AD Elev. 967' | THR 15 Elev. 939' |
| APCH FRUSTRADA: Viraje izquierda inmediato en ASC para 4000' vía VIO59, LT TR304° hasta VI116, ingreso en HLDG 188° izquierdo. | | | 10400FT |
| Missed Apch: Turn left immediately climbing to 4000' via VIO59 LT TR304° until VI116, enter on HLDG 188° left. | | | MSA 25 NM RW15 |



| | | | |
|-----------|--|------------------------|----------------------------|
| CATEGORÍA | DIRECTO RWY 15 Straight in RWY 15 | CIRCULANDO Circling | ALTN Alternate Minimums |
| | QNH SCQP LNAV MDA 1460' (521') | | |
| A | 2.9 Km | NA | NA |
| B | | | |

AD NO CERTIFICADO PARA OPS IFR. VER DAP 11 133 Y NOTAS SOBRE CONDICIONES PARA APROXIMAR

Usar ajuste altimétrico de Temuco Radar Freq 118.7 MHz
 Use Temuco Radar altimeter setting freq 118.7 MHz

| | | | | |
|----------------------|----|-----|-----|--|
| Veloc. Terrestre Kts | 80 | 100 | 120 | |
| FPM (ángulo 3.0°) | | | | |

Procedimiento no ejecutable sin QNH
 Procedure non-executable without QNH