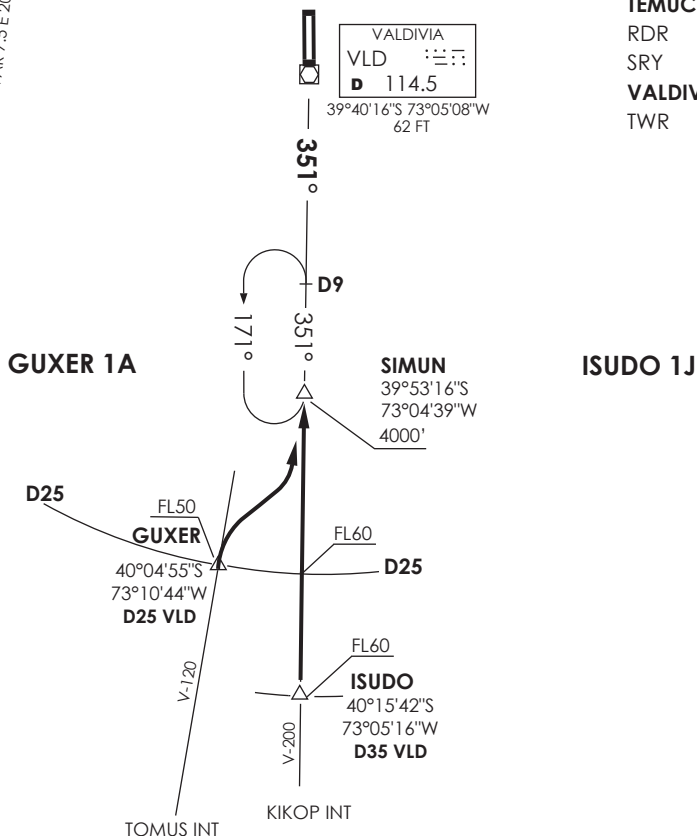


| TEMUCO APP |       |
|------------|-------|
| RDR        | 118.7 |
| SRY        | 119.2 |
| VALDIVIA   |       |
| TWR        | 118.3 |

VAR 7,5 E 2018



Nivel de Transición by ATC  
 Transition Level by ATC

No se ajusta a escala / Not to scale

**STAR ISUDO 1J / GUXER 1A**

**ISUDO 1J:** En AWY V-200, cruzar ISUDO, (D35 VLD VOR/DME), FL60 o superior. Cruzando D25 VLD, abandonar FL60 e interceptar R171 (TR351°). Cruzar SIMUN INT (D13) 4000FT o superior, luego según autorización ATC.

**ISUDO 1J:** On AWY V-200, cross ISUDO, (D35 VLD VOR/DME) at or above FL60. Crossing D25 VLD, leave FL60 and intercept R171 (TR351°). Cross SIMUN INT (D13) at or above 4000FT, then according to ATC clearance.

**GUXER 1A:** En AWY V-120, cruzando GUXER, (D25 VLD VOR/DME), abandonar FL50 para interceptar R171 (TR351°). Cruzar SIMUN INT (D13 VLD) 4000FT o superior, luego según autorización ATC.

**GUXER 1A:** On AWY V-120, crossing GUXER, (D25 VLD VOR/DME), leave FL50 to intercept R171 (TR351°). Cross SIMUN INT (D13 VLD) at or above 4000FT, then according to ATC clearance.

DASA / SECCION AISM-AP