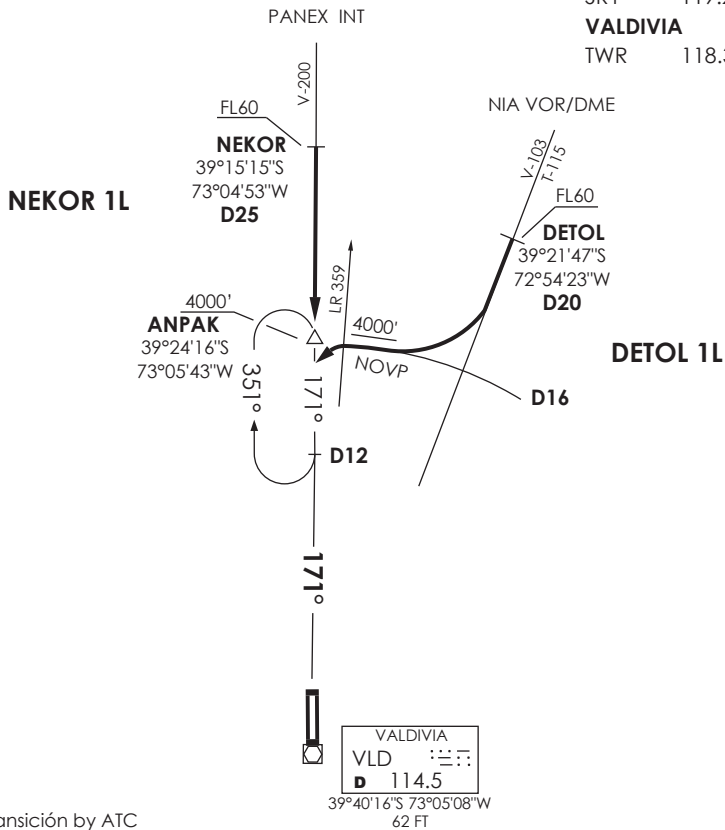


TEMUCO APP	
RDR	118.7
SRY	119.2
VALDIVIA	
TWR	118.3

VAR 7.5 E 2018



Nivel de Transición by ATC
 Transition Level by ATC

No se ajusta a escala / Not to scale

STAR NEKOR 1L / DETOL 1L

NEKOR 1L: En AWY V-200, cruzando NEKOR (D25 VLD VOR/DME), abandonar FL60 e interceptar R351 (TR171°). Cruzar ANPAK INT (D16) 4000FT o superior, luego según autorización ATC.

NEKOR 1L: On AWY V-2000, crossing NEKOR (D25 VLD VOR/DME), leave FL60 and intercept R351 (TR171°). Cross ANPAK INT (D16) at or above 4000FT, then according to ATC clearance.

DETOL 1L: En AWY V-103 / T-115, cruzando DETOL (D20 VLD VOR/DME), abandonar FL60 en descenso para 4000FT o superior, orbitar D16 para interceptar R351 (TR171°) a 4000FT o superior, luego según autorización ATC.

DETOL 1L: On AWY V-103 / T-115, crossing DETOL (D20 VLD VOR/DME), leave FL60 descending to or above 4000FT, join D16 to intercept R351 (TR171°) at or above 4000FT, then according to ATC clearance.