

# AD. PICHAY VALDIVIA - CHILE

SCVD IAC 6  
RNAV (RNP) Z Rwy 17

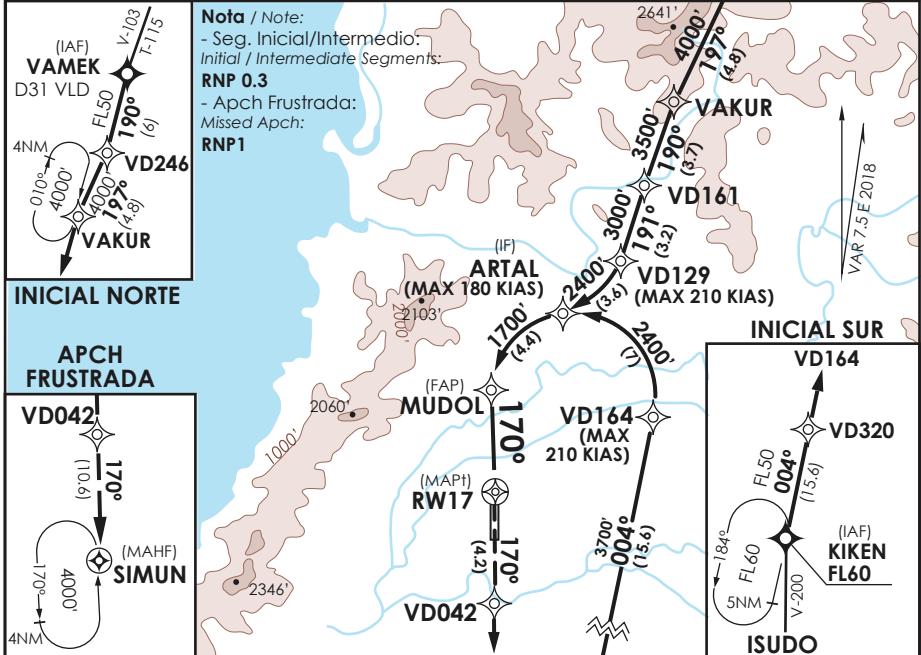
APP TEMUCO Temuco Approach	118.7/119.2	TORRE VALDIVIA Valdivia Tower	118.3	CONTROL TERRESTRE Ground Control	121.8
-------------------------------	-------------	----------------------------------	-------	-------------------------------------	-------

<b>RNAV</b>	FINAL APCH CRS <b>170°</b>	MNM ALT MUDOL <b>1700'</b>	DA (H) <b>380' (321')</b>	AD Elev. THR 17 Elev. <b>59'</b>	5600 FT
-------------	-------------------------------	-------------------------------	------------------------------	-------------------------------------	---------

APCH FRUSTRADA: Ascenso en TR170° hacia VD042 y posterior SIMUN 4000', ingrese a HLDG 350° izquierda o según ATC CLR.

Missed Apch: Climb on TR170° to VD042 and then to SIMUN 4000', enter on HLDG 350° left or according to ATC CLR.

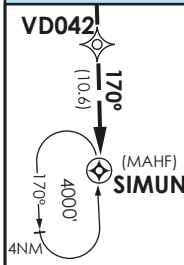
MSA 25 NM RW17



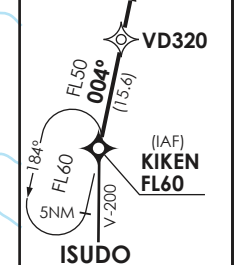
**Nota / Note:**  
- Seg. Inicial/Intermedio:  
Initial / Intermediate Segments:  
**RNP 0.3**  
- Apch Frustrada:  
Missed Apch:  
**RNP1**

### INICIAL NORTE

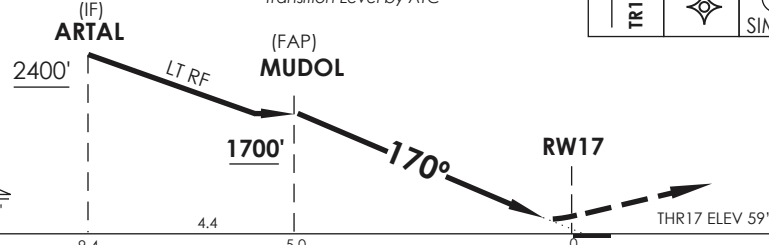
### APCH FRUSTRADA



### INICIAL SUR



Nivel de Transición by ATC  
Transition Level by ATC



CATEGORIA	DIRECTO RWY 17 Straight in RWY 17	<b>RNP AR RWY 17 SCVD:</b> Requiere RF. Para sistemas Baro NAV no compensados proc NA bajo -5°C o sobre 50°C. Autorización requerida de acuerdo a DAN 06-22.  RF required. For uncompensated Baro VNAV systems procedure NA below -5°C or above 50°C. Authorization required according to DAN 06-22.
	RNP 0.3 DA <b>380' (321')</b>	
	1.6 Km	

Veloc. Terrestre Kts	80	100	120	140	160	MNM ALTN: VER PAG GEN 2.19 See pag 2.19
Angulo DES 3° FPM	425'	531'	637'	743'	849'	<b>RQR AUTORIZACIÓN ESPECIAL PARA ACFT Y CREW</b>
MAPt en DA						SPECIAL ACFT AND AIRCREW AUTHORIZATION RQRD

DASA / SECCION AIS-MAP