

AD. PICHAY VALDIVIA - CHILE

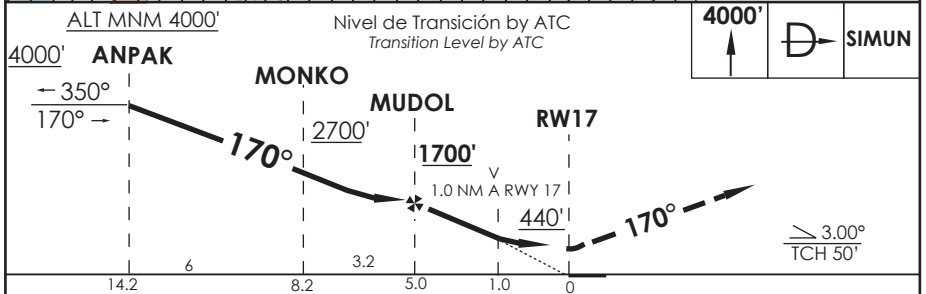
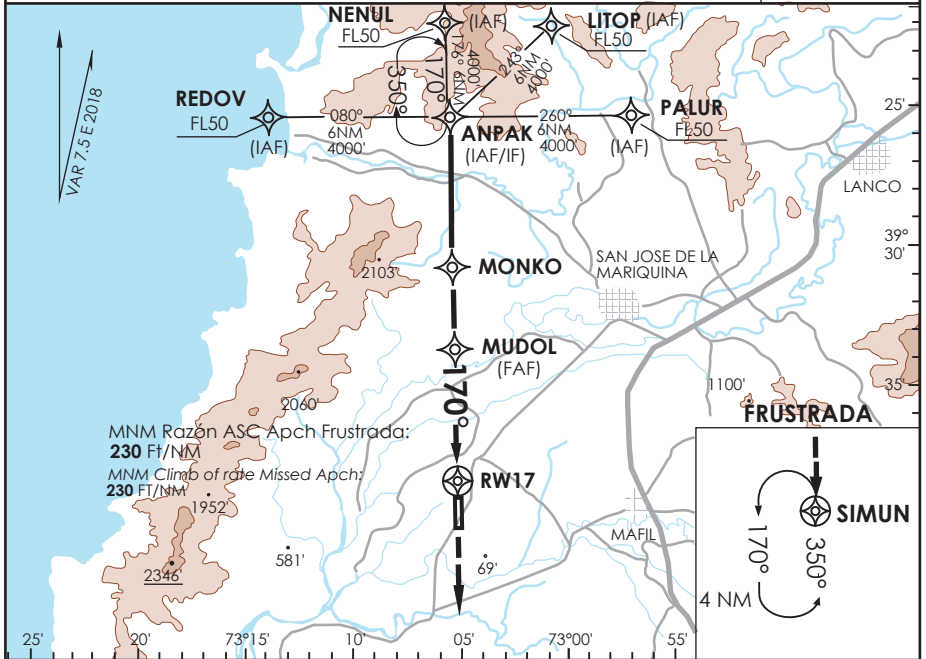
SCVD IAC 4 RNAV (GNSS) Y RWY 17

APP TEMUCO Temuco Approach	118.7/119.2	TORRE VALDIVIA Valdivia Tower	118.3	CONTROL TERRESTRE Ground Control	121.8
-------------------------------	-------------	----------------------------------	-------	-------------------------------------	-------

RNAV	FINAL APCH CRS 170°	MNM MUDOL 1700'	MDA 440' (381')	AD Elev THR 17 Elev	59' 59'
-------------	-------------------------------	---------------------------	---------------------------	------------------------	--------------------------

APCH FRUSTRADA: Ascenso a 4000' directo SIMUN. Ingreso HLDG 350° izquierda o segun ATC CLR.
Missed Apch: Climb to 4000' direct SIMUN. Enter on HLDG 350° left or according to ATC clearance.

5600 FT
MSA 25 NM RWY17



CATEGORIA	DIRECTO RWY 17 <i>Straight in RWY 17</i>	CIRCULANDO <i>Circling</i>	ALTN <i>Alternate Minimums</i>
	RNAV MDA 440' (381')		
A	1.6 Km	440' (381')	VER PAG. GEN 2.19
B		540'	
C		(481')	
D		620' (561')	
	2.0 Km	3.2 Km	

-Requiere aprobación RNP APCH.
-RNP APCH approval RQRD.

Veloc. Terrestre Kts	80	100	120	140	160
Angulo DES 3.0° FPM	425'	531'	637'	743'	849'
MAPt en RWY17					

DASA / SECCION AS-MAP