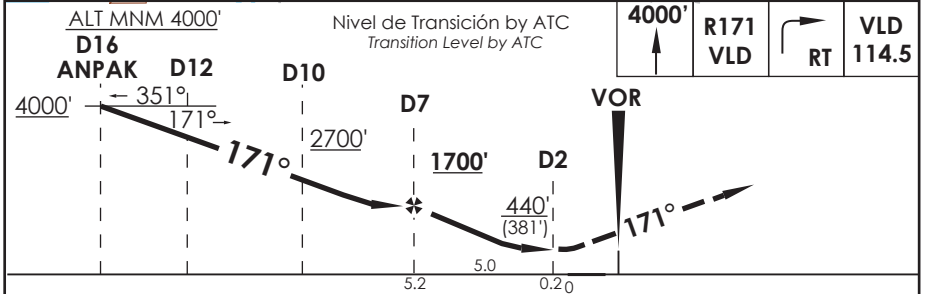
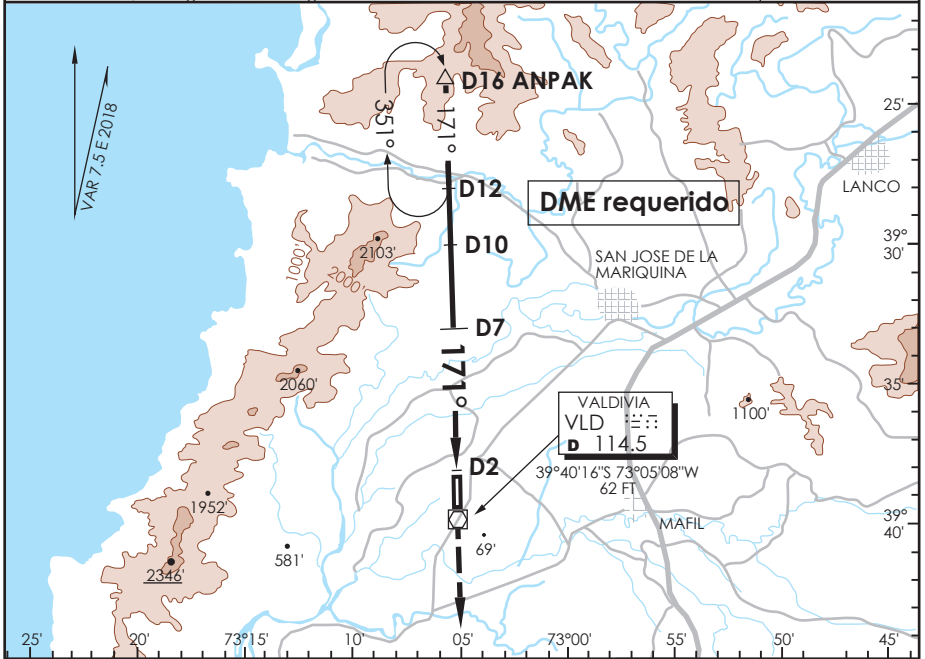


AD. PICHAY VALDIVIA - CHILE

SCVD IAC 2
VOR Rwy 17

APP TEMUCO Temuco Approach 118.7/119.2		TORRE VALDIVIA Valdivia Tower 118.3		CONTROL TERRESTRE Ground Control 121.8	
VOR VLD 114.5	FINAL APCH CRS 171°	MNM ALT D 7 1700'	MDA 440' (381')	AD Elev THR 17 Elev 59'	5600 FT MSA 25 NM VLD
APCH FRUSTRADA: Ascenso a 4000' R171 VLD, regrese derecha VOR VLD. Ingrese HLDG BTN D12 y D16 N, 171° derecha o según ATC CLR. Missed Apch: Climb to 4000' on R171 VLD, right turn direct to VLD VOR. Enter on HLDG between D12 and D16 N, 171° right or according to ATC clearance.					



CATEGORIA	DIRECTO RWY 17 <i>Straight in RWY 17</i>	CIRCULANDO <i>Circling</i>	ALTN <i>Alternate Minimums</i>
	MDA 440' (381')		
A	1.6 Km	440' (381')	VER PAG. GEN 2.19
B		540'	
C		(481')	
D	2.0 Km	620' (561')	3.2 Km

Veloc. Terrestre Kts	80	100	120	140	160
Angulo DES 2.88° FPM	404'	509'	611'	713'	815'
Dist.FAF a MAPT 5.0 NM	3:45	3:00	2:30	2:09	1:53

DASA / SECCION AS-MAP