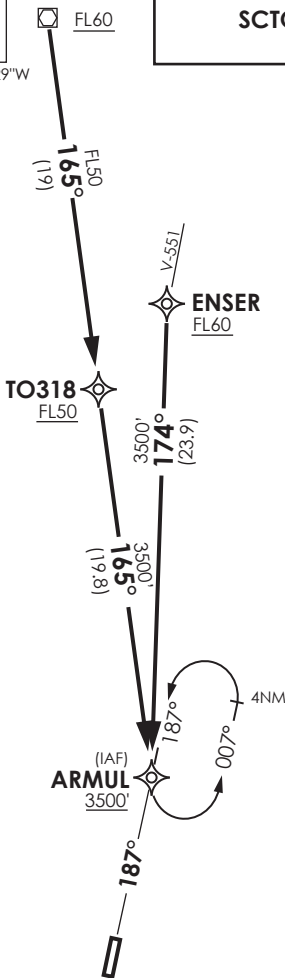


TEMUCO	
RDR	118.7
SRY	119.2
TWR	118.4
VICTORIA	
TIBA	118.2

VAR 5,9° E 2019

LOS ANGELES
 MAD : : : :
 D 112.9
 37°24'24"S 72°25'29"W
 370 FT



Nivel de Transición by ATC
 Transition Level by ATC

No se ajusta a escala / Not to scale

STAR ARMUL 1A / ARMUL 1B RNAV

ARMUL 1A: Desde MAD VOR proceder via TO318 - ARMUL. Cruzar MAD VOR FL60 o superior, TO318 FL50 o superior, ARMUL 3500 Ft o superior. Luego interceptar APCH RNAV a RWY19.

ARMUL 1A: From MAD VOR proceed via TO318 - ARMUL. Cross MAD VOR at or above FL60, TO318 at or above FL50, ARMUL at or above 3500 Ft, then intercept RNAV APCH RWY19.

ARMUL 1B: Desde ENSER proceder a IAF 19. Cruzar ENSER FL60 o superior, IAF19 3500 Ft o superior. Luego interceptar APCH RNAV a RWY19.

ARMUL 1B: From ENSER proceed to ARMUL. Cross ENSER at or above FL60, ARMUL at or above 3500 Ft, then intercept RNAV APCH RWY19.

DASA / SECCION AIS-MAP