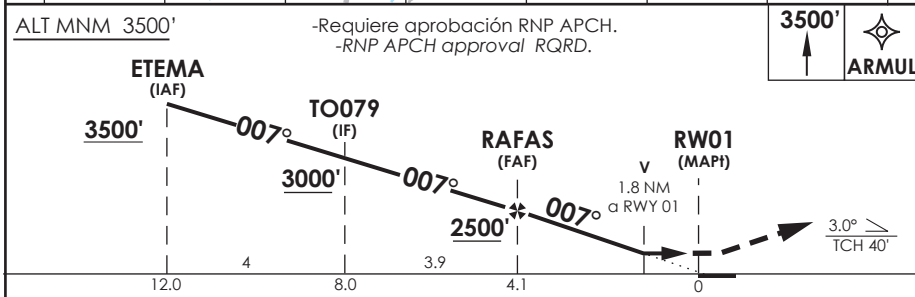
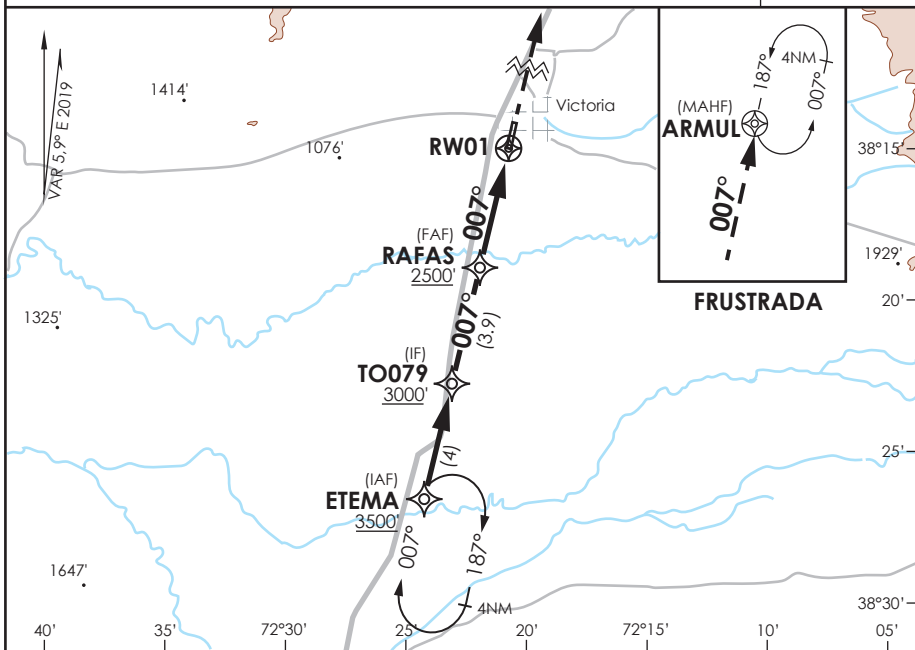
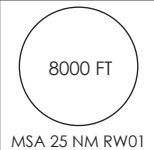


AD VICTORIA VICTORIA - CHILE

SCTO IAC 2 RNAV (GNSS) Rwy 01

TEMUCO RADAR Temuco Radar	118.7 / 119.2	TORRE TEMUCO Temuco TWR	118.4	TIBA TIBA	118.2
RNAV	FINAL APCH CRS 007°	MNM ALT RAFAS 2500'	LNAV MDA (H) 1760' (625')	AD Elev. 1150'	THR 01 Elev. 1135'

APCH FRUSTRADA: Ascenso a 3500' directo a ARMUL. Ingrese en HLDG 187° izquierda.
Missed Apch: Climb to 3500' direct to ARMUL. Enter on HLDG, 187° left.



CATEGORÍA	DIRECTO RWY 01 <i>Straight in RWY 01</i>	CIRCULANDO <i>Circling</i>	ALTN <i>Alternate Minimums</i>
	QNH SCQP TWR LNAV MDA 1760' (625')		
A	3.2 Km	NA	NA
B			

AD NO CERTIFICADO PARA OPS IFR. VER DAP 11 133 Y NOTAS SOBRE CONDICIONES PARA APROXIMAR

Usar ajuste altimétrico de Temuco Twr Freq 118.4 MHz.
Use Temuco TWR altimeter setting freq 118.4 MHz.

Veloc. Terrestre Kts	80	100	120	140	Procedimiento no ejecutable sin QNH <i>Procedure non-executable without QNH</i>
FPM (ángulo DES 3°)	425	531	637	743	