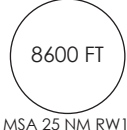
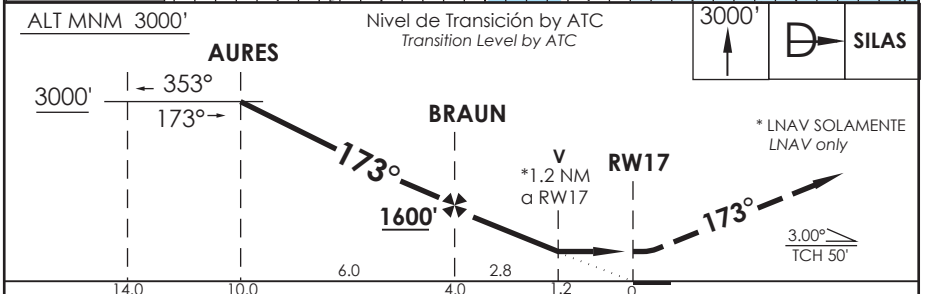
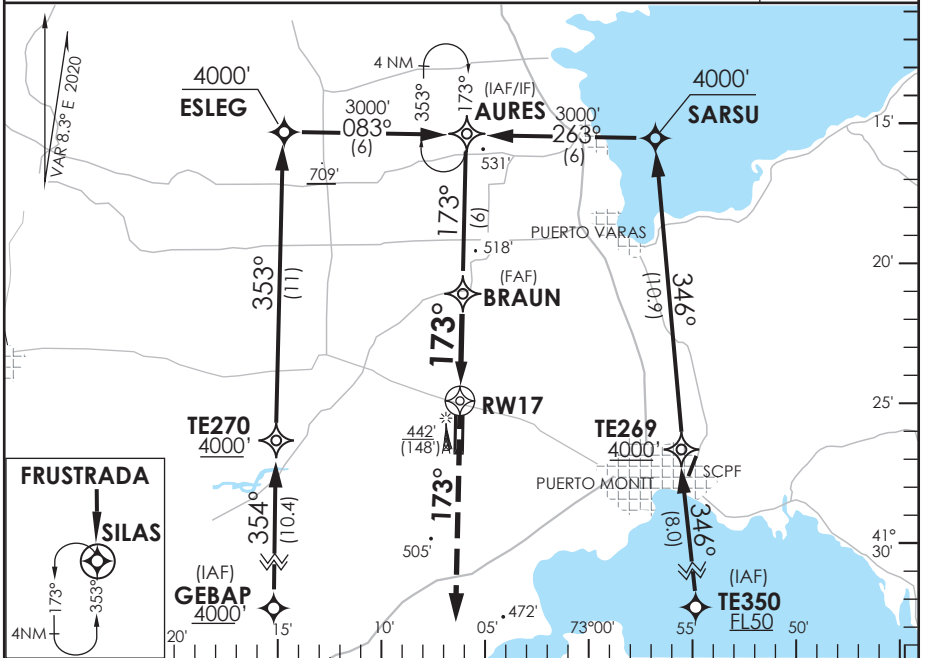


AP. EL TEPUAL PUERTO MONTT - CHILE

SCTE IAC 8
RNAV (GNSS) Rwy 17

APP PUERTO MONTT RADAR Puerto Montt Radar Approach	121.3	TORRE PUERTO MONTT Puerto Montt Tower	118.1	CONTROL TERRESTRE Ground Control	121.9
RNAV	FINAL APCH CRS 173°	MNM ALT BRAUN 1600'	LNAV/VNAV DA(H) 550' (286')	AD Elev. THR 17 Elev. 294'	
APCH FRUSTRADA: Ascenso 3000' directo SILAS, ingrese HLDG 353° izquierda o según autorización ATC. Missed Apch: Climb to 3000' direct to SILAS, enter on HLDG 353° left or according to ATC clearance.					



C A T E G O R Í A	DIRECTO RWY 17 Straight in RWY 17		CIRCULANDO Circling	ALTN Alternate Minimums		
	LNAV/VNAV DA 550'(286')	LNAV MDA 720'(456')				
	A	1.6 Km	1.6 Km	820' (526')	VER PAG. GEN 2.19	
	B					
C	2.4 Km			3.2 Km		SEE PAGE GEN 2.19
D						

-Requiere aprobación RNP APCH. -RNP APCH approval RQRD.						Para sistemas Baro VNAV no compensados proc NA bajo -10°C o sobre 39°C. For uncompensated Baro VNAV systems procedure NA below -10°C or above 39°C.						
Veloc. Terrestre Kts	80	100	120	140	160							
Angulo DES 3.0°	425'	531'	637'	743'	849'							
MAPt en RW17												

DASA / SECCION AS-MAP