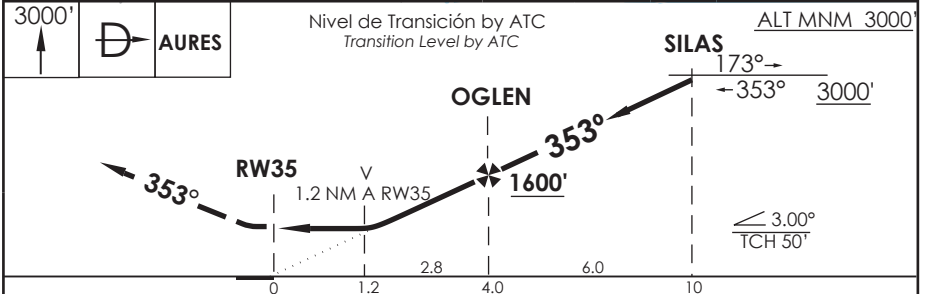
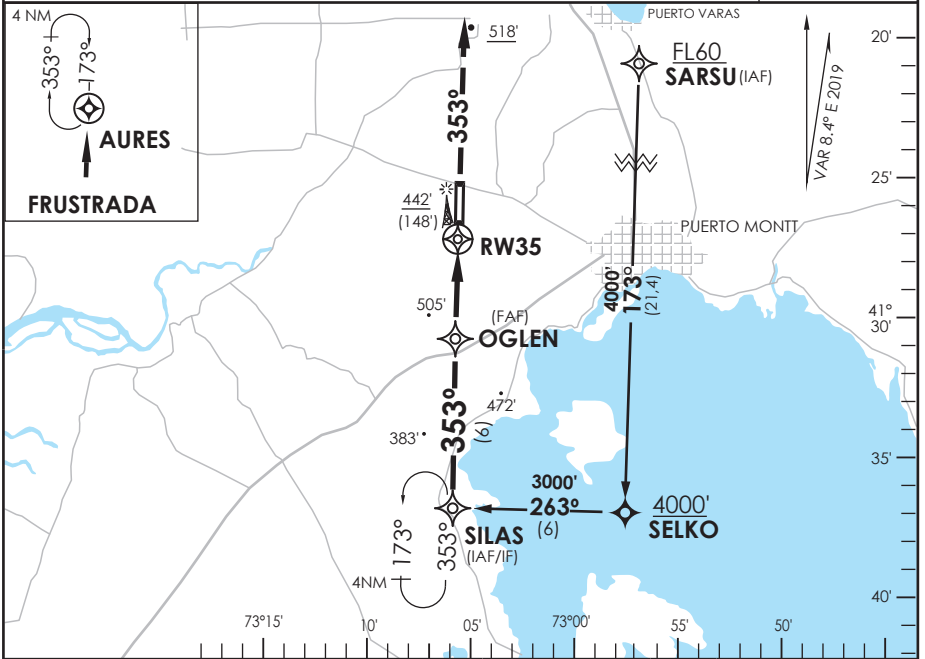


# AP. EL TEPUAL PUERTO MONTT - CHILE

## SCTE IAC 7 RNAV (GNSS) Rwy 35

APP PUERTO MONTT RADAR <i>Puerto Montt Radar Approach</i>	121.3	TORRE PUERTO MONTT <i>Puerto Montt Tower</i>	118.1	CONTROL TERRESTRE <i>Ground Control</i>	121.9
<b>RNAV</b>	FINAL APCH CRS <b>353°</b>	MNM ALT OGLEEN <b>1600'</b>	LNAV/VNAV DA(H) <b>720' (426')</b>	AD Elev. <b>294'</b>	THR 35 Elev. <b>294'</b>
APCH FRUSTRADA: Ascenso 3000' directo AURES, ingrese a HLDG 173° derecho o según autorización ATC. <i>Missed Apch: Climb to 3000' direct to AURES, enter on HLDG 173° right or according to ATC clearance.</i>					8600 FT MSA 25 NM RW35



CATEGORÍA	DIRECTO RWY 35 <i>Straight in RWY 35</i>				CIRCULANDO <i>Circling</i>	ALTN <i>Alternate Minimums</i>
	LNAV/VNAV DA 720' (426')		LNAV MDA 720' (426')			
	ALSF-2	WO ALSF-2	ALSF-2	WO ALSF-2		
A	1.2 Km	1.6 Km	1.2 Km	1.6 Km	820' (526')	VER PAG. GEN 2.19
B						
C	1.6 Km	2.0 Km	1.6 Km	2.0 Km	960' (666')	SEE PAGE GEN 2.19
D						

-Requiere aprobación RNP APCH. -RNP APCH approval RQRD.					BARO / VNAV NA BAJO -10°C o sobre 39°C. BARO / VNAV not authorized below -10°C or above 39°C.	
Veloc. Terrestre Kts	80	100	120	140	160	
Angulo DES 3.0°	425'	531'	637'	743'	849'	
MAPt en RW35						

DASA / SECCION AS-MAP