
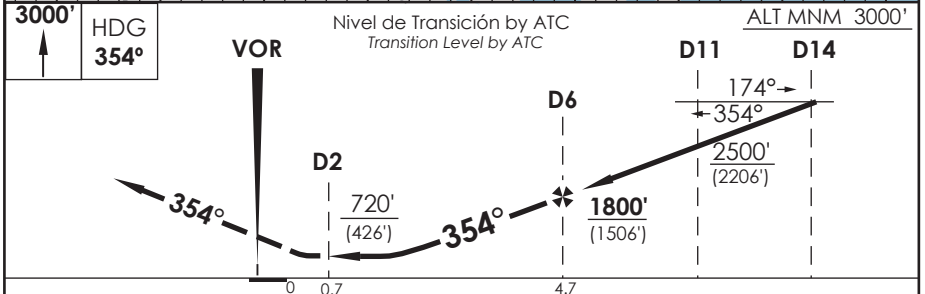
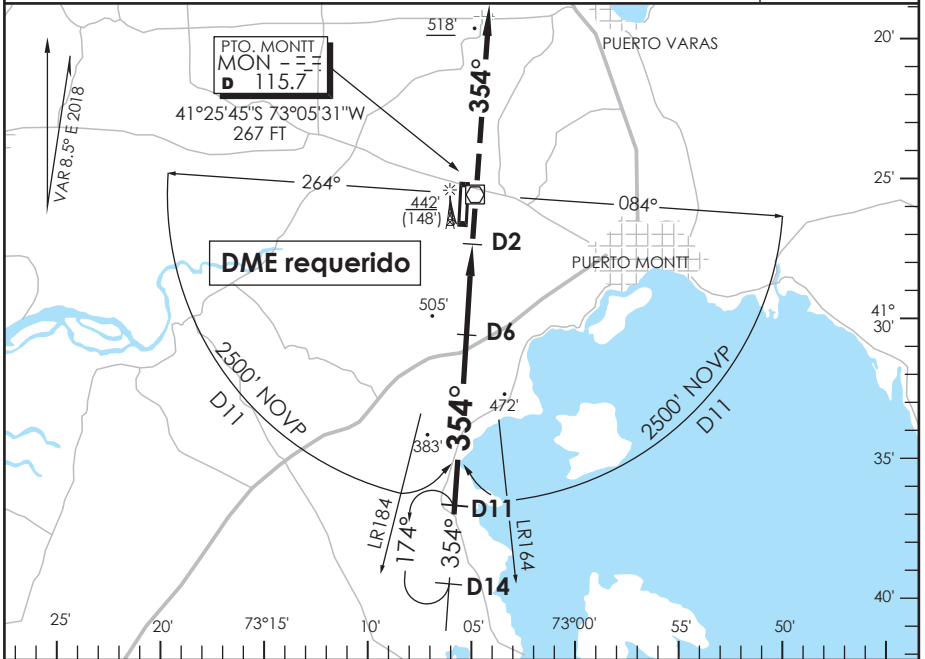


AP. EL TEPUAL PUERTO MONTT- CHILE

SCTE IAC 4
VOR Z Rwy 35

APP PUERTO MONTT RADAR Puerto Montt Radar Approach		121.3	TORRE PUERTO MONTT Puerto Montt Tower		118.1	CONTROL TERRESTRE Ground Control		121.9
VOR MON 115.7	FINAL APCH CRS 354°	MNM ALT D6 1800' (1506')	MDA 720' (426')		AD Elev. 294'	THR 35 Elev. 294'		
APCH FRUSTRADA: Ascenso 3000' HDG 354°, luego según autorización ATC. Missed Apch: Climb to 3000' on HDG 354°, then according to ATC clearance.								



CATEGORÍA	DIRECTO RWY 35 Straight in RWY 35		CIRCULANDO Circling	ALTN Alternate Minimums
	MDA 720' (426')			
		ALSF-2	WO ALSF-2	
A	1.2 Km	1.6 Km	820'	1.6 Km
B			(526')	2.4 Km
C	1.6 Km	2.0 Km	960'	VER PAG. GEN 2.19 SEE PAGE GEN 2.19
D			(666')	

Veloc. Terrestre Kts	80	100	120	140	160
Angulo DES 2.92° PFM	413'	517'	620'	723'	827'
FAF to MAPt 4.0 NM	3:00	2:24	2:00	1:43	1:30

DASA / SECCION AS-MAP