
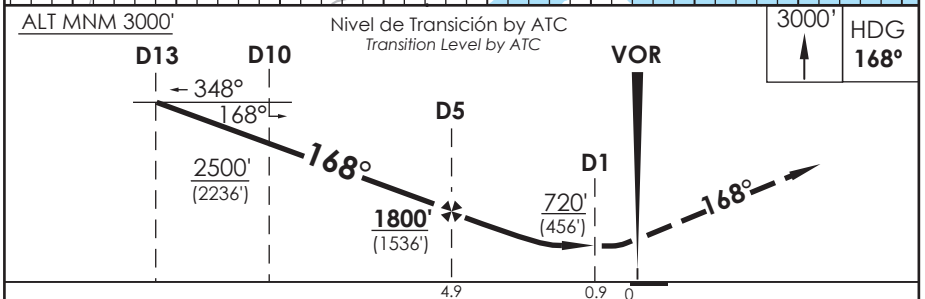
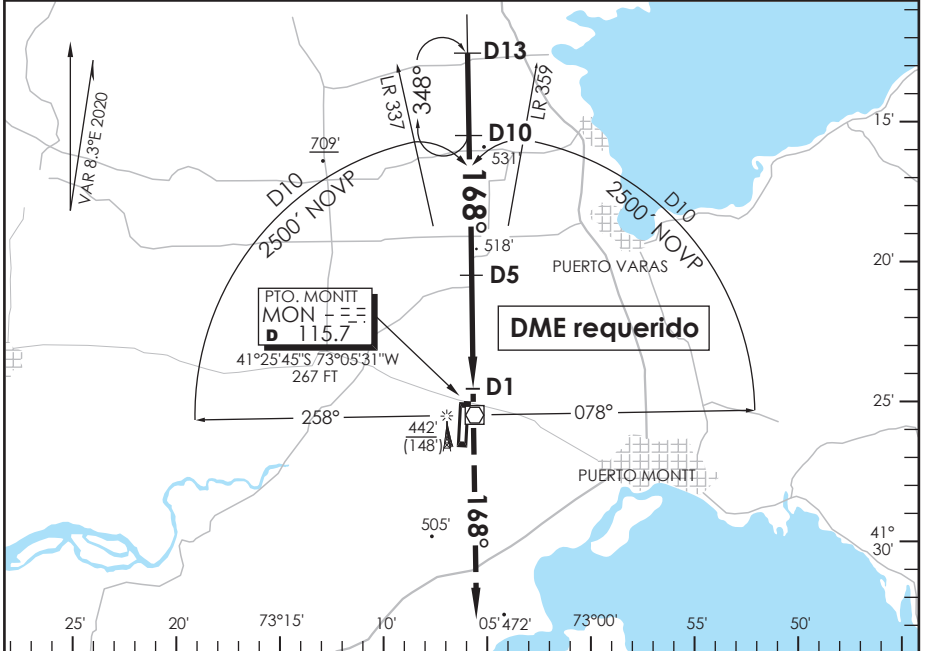


AP. EL TEPUAL PUERTO MONTT - CHILE

SCTE IAC 3
VOR Z Rwy 17

APP PUERTO MONTT RADAR Puerto Montt Radar Approach		121.3	TORRE PUERTO MONTT Puerto Montt Tower		118.1	CONTROL TERRESTRE Ground Control		121.9
VOR MON 115.7	FINAL APCH CRS 168°	MNM ALT D5 1800' (1536')	MDA 720' (456')	AD Elev. 294'	THR 17 Elev. 264'	 8600 FT MSA 25 NM MON		
APCH FRUSTRADA: Ascenso 3000' HDG 168°, luego según autorización ATC. Missed Apch: Climb to 3000' on HDG 168°, then according to ATC clearance.								



C A T E G O R I A	DIRECTO RWY 17 <i>Straight in RWY 17</i>		CIRCULANDO <i>Circling</i>	ALTN <i>Alternate Minimums</i>	
	MDA 720' (456')				
	A	1.6 Km	820'	1.6 Km	VER PAG. GEN 2.19 SEE PAGE GEN 2.19
	B		(526')		
C	2.4 Km		960'	3.2 Km	
D		(666')			

Veloc. Terrestre Kts	80	100	120	140	160
Angulo DES 2,86° PFM	405'	506'	607'	708'	810'
FAF to MAPt 4.0 NM	3:00	2:24	2:00	1:43	1:30

DASA / SECCION AS-MAP