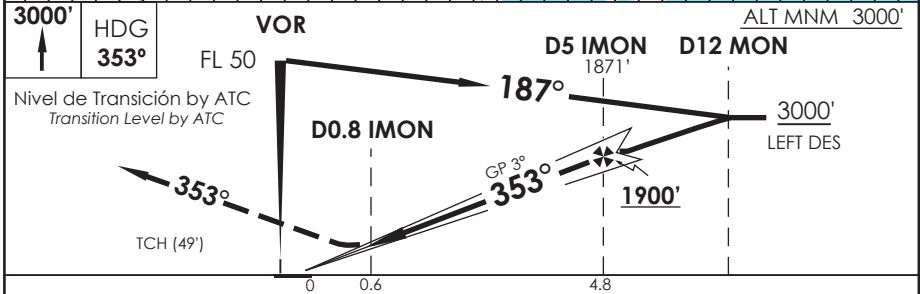
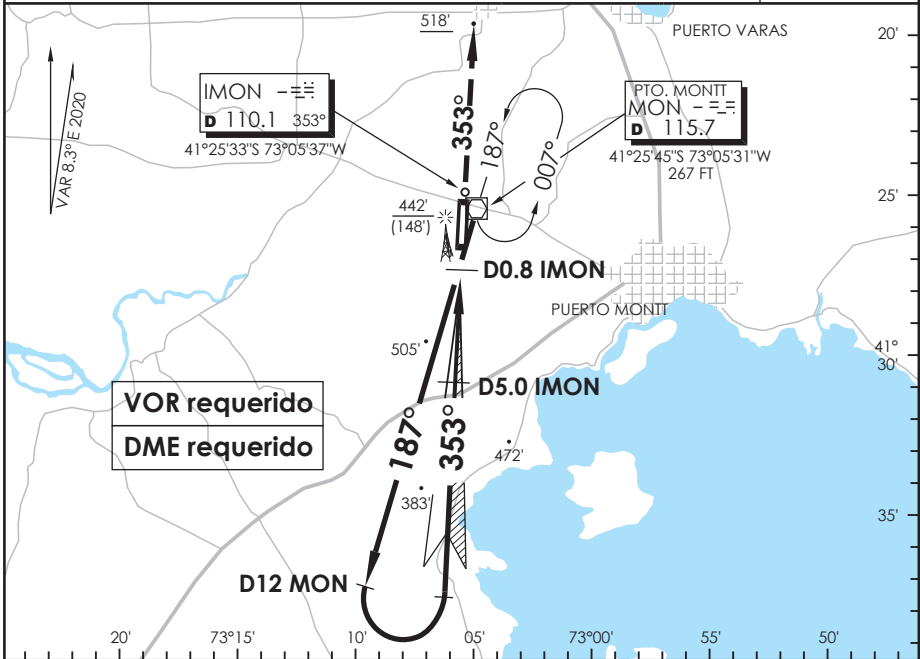


AP. EL TEPUAL PUERTO MONTT - CHILE

SCTE IAC 2
ILS Y Rwy 35

APP PUERTO MONTT RADAR Puerto Montt Radar Approach		121.3	TORRE PUERTO MONTT Puerto Montt Tower		118.1	CONTROL TERRESTRE Ground Control		121.9	
LOC IMON	FINAL APCH CRS	MNM ALT D5 IMON	DA(H)	AD Elev.	THR 35 Elev.	8600 FT			
110.1	353°	1900'	494'(200')	294'	294'				
APCH FRUSTRADA: Ascenso 3000' HDG 353°, luego según autorización ATC.							MSA 25 NM MON		
Missed Apch: Climb to 3000' on HDG 353°, then according to ATC clearance.									



CATEGORÍA	DIRECTO RWY 35 Straight in RWY 35				CIRCULANDO Circling	ALTN Alternate Minimums
	** ILS DA 494' (200')		** LOC WO GP MDA 760' (466')			
	ALSF-2	WO ALSF-2	ALSF-2	WO ALSF-2		
A	RVR 550m*	1.2 Km	0.8 Km	1.6 Km	820' (526')	VER PAG. GEN 2.19 SEE PAGE GEN 2.19
B	RVR 750m		1.6 Km	2.4 Km	960' (666')	
C	0.8 Km					
D						

* Ver pagina GEN 2.11 See page GEN 2.11		** WO IMON DME PROC NA Procedure not authorized without IMON DME			
Veloc. Terrestre Kts	80	100	120	140	160
GP 3.0° FPM	425'	531'	637'	743'	849'
Dist.FAF a MAPT 4.2 NM	3:09	2:31	2:06	1:48	1:35

CAMBIO: VAR
Change: VAR

DGAC AMDT 84

26 MARZO 2020

DASA / SECCION AS-MAP