

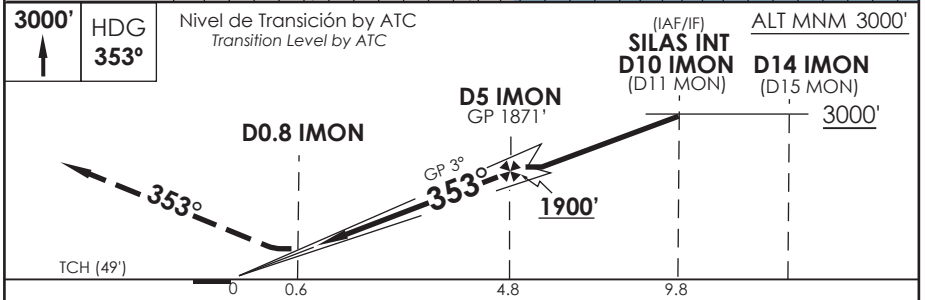
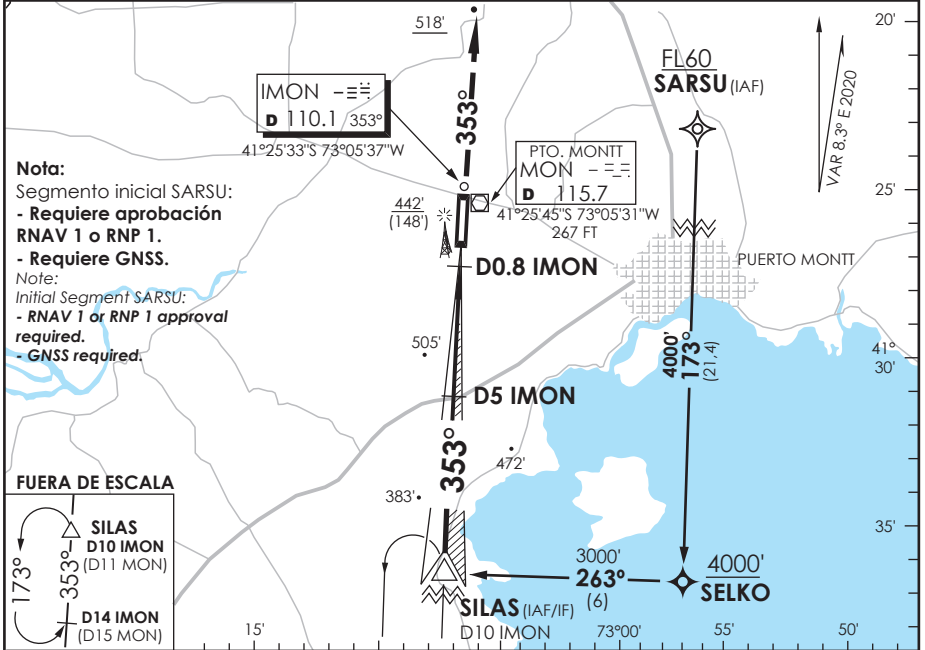
AP. EL TEPUAL PUERTO MONTT - CHILE

SCTE IAC 1
ILS Z Rwy 35

| | | | | | | | | |
|---|----------------|-----------------|--|----------|--------------|-------------------------------------|--|-------|
| APP PUERTO MONTT RADAR Puerto Montt Radar Approach | | 121.3 | TORRE PUERTO MONTT Puerto Montt Tower | | 118.1 | CONTROL TERRESTRE Ground Control | | 121.9 |
| LOC IMON | FINAL APCH CRS | MNM ALT D5 IMON | DA(H) | AD Elev. | THR 35 Elev. | 8600 FT | | |
| 110.1 | 353° | 1900' | 494' (200') | 294' | 294' | MSA 25 NM MON | | |

APCH FRUSTRADA: Ascenso 3000' HDG 353°, luego según autorización ATC.

Missed Apch: Climb to 3000' on HDG 353°, then according to ATC clearance.



| | | | | | | |
|-----------|-----------------------------------|-----------|---------------------------------|-----------|------------------------|---|
| CATEGORÍA | DIRECTO RWY 35 Straight in RWY 35 | | | | CIRCULANDO Circling | ALTN Alternate Minimums |
| | ** ILS DA 494' (200') | | ** LOC WO GP MDA 760' (466') | | | |
| | ALSF-2 | WO ALSF-2 | ALSF-2 | WO ALSF-2 | | |
| A | RVR 550m* | 1.2 Km | 0.8 Km | 1.6 Km | 820' (526') | VER PAG. GEN 2.19 SEE PAGE GEN 2.19 |
| B | RVR 750m | | | | | |
| C | 0 Km | | 1.6 Km | 2.4 Km | 960' (666') | |
| D | 0.8 Km | | | | | |

* Ver página GEN 2.11
See page GEN 2.11

** WO IMON DME PROC NA
Procedure not authorized without IMON DME

| | | | | | |
|-------------------------|------|------|------|------|------|
| Veloc. Terrestre Kts | 80 | 100 | 120 | 140 | 160 |
| GP 3,0° FPM | 425' | 531' | 637' | 743' | 849' |
| Dist. FAF a MAPT 4.2 NM | 3:09 | 2:31 | 2:06 | 1:48 | 1:35 |

CAMBIO: VAR
Change: VAR

DGAC AMDT 84

26 MARZO 2020

DASA / SECCION AS-MAP