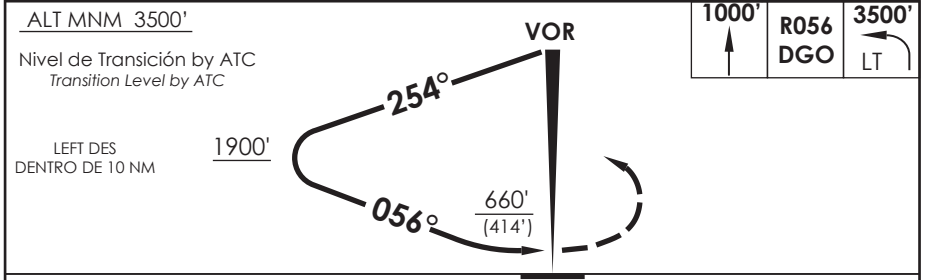
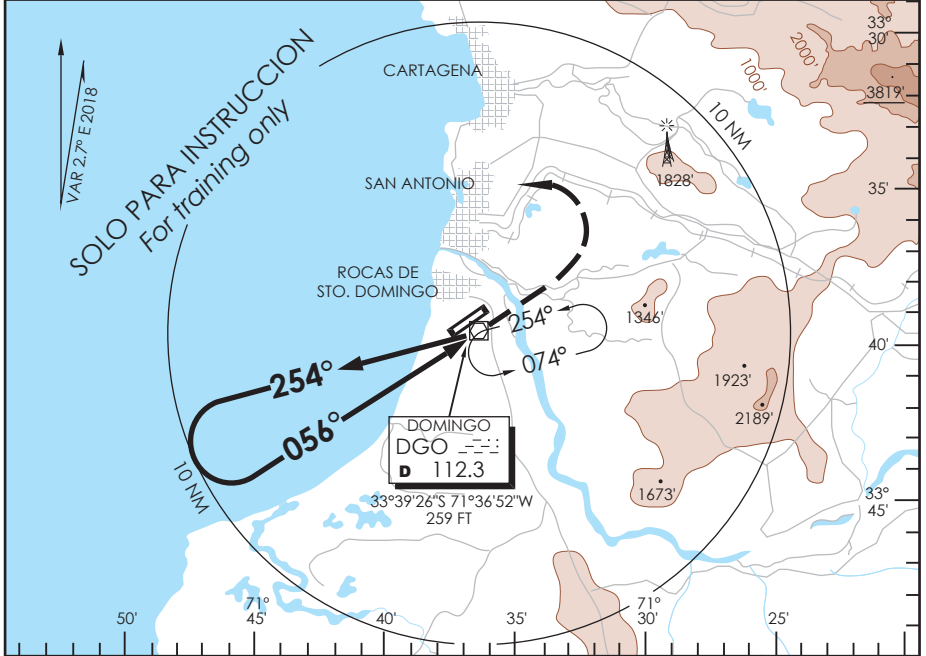


SANTO DOMINGO SANTO DOMINGO - CHILE

SCSN IAC 3
VOR Y Rwy 05

TORRE SANTO DOMINGO Santo Domingo Tower 118.5		CONTROL TERRESTRE Ground Control 121.9			
VOR DGO 112.3	FINAL APCH CRS 056°	WO FAF	MDA(H) 660'(414')	AD Elev THR 05 Elev 246'	234'
APCH FRUSTRADA: Ascenso via R056 DGO hasta 1000', viraje izquierda continuar ascenso a 3500', ingrese HLDG 254° izquierda o mantener VFR o según instrucciones ATC. Missed Apch: Climb on R056 DGO VOR until 1000', left turn continue climbing to 3500' enter on HLDG 254° left or maintain VFR or according ATC instructions.					5600 FT MSA 25 NM DGO



C A T A D A	DIRECTO RWY 05 <i>Straight in RWY 05</i>	CIRCULANDO <i>Circling</i>	ALTN <i>Alternate Minimums</i>	
	MDA 660' (414') CEIL 1150 Ft			
A	3.5 Km	800'(554') CEIL 1150'	3.5 Km	NA
B		880'(634') CEIL 1150'		