
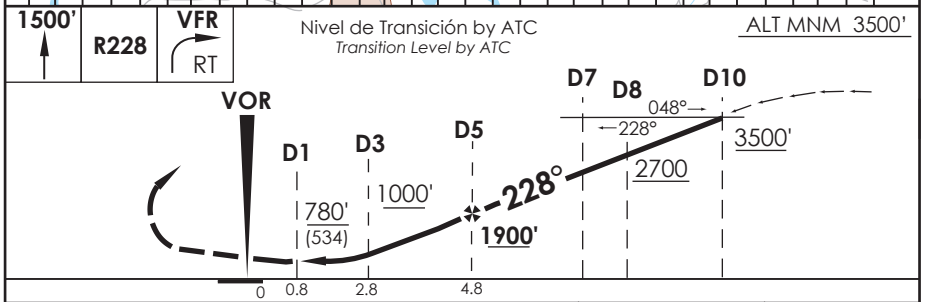
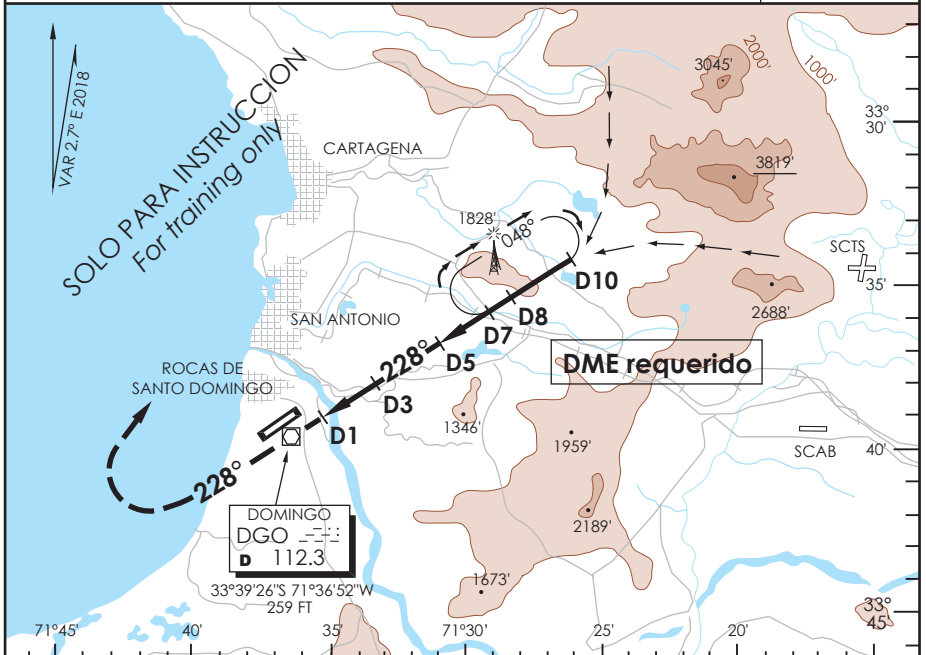


# SANTO DOMINGO SANTO DOMINGO - CHILE

SCSN IAC 2  
VOR Rwy 23

TORRE SANTO DOMINGO Santo Domingo Tower		118.5	CONTROL TERRESTRE Ground Control		121.9	
VOR DGO	FINAL APCH CRS	MNM ALT D5	MDA(H)	AD Elev	246'	
112.3	228°	1900'	780'(534')	THR 23 Elev	246'	
APCH FRUSTRADA: Ascenso en R228 hasta 1500', viraje derecha en ascenso manteniendo VFR o según instrucciones ATC. Missed Apch: Climb on R228 DGO VOR til 1500', right turn climbing and maintainig VFR or according to ATC instructions.						MSA 25 NM DGO



A	DIRECTO RWY 23 <i>Straight in RWY 23</i>		CIRCULANDO <i>Circling</i>	ALTN <i>Alternate Minimums</i>	
	MDA 780' (534') CEIL 1150 Ft				
B	3.5 Km		800'(554') CEIL 1150'	3.5 Km	NA
Holding sólo en VMC / <i>Holding in VMC only</i>					
Veloc. Terrestre Kts	80	100	120	140	160
Angulo DES 3.2° FPM	453	566	679	793	906
FAF to MAP± 4.0 NM	3:00	2:24	2:00	1:43	1:30

CAMBIO: VAR  
Change: VAR

DGAC AMDT 82

16 AGOSTO 2018