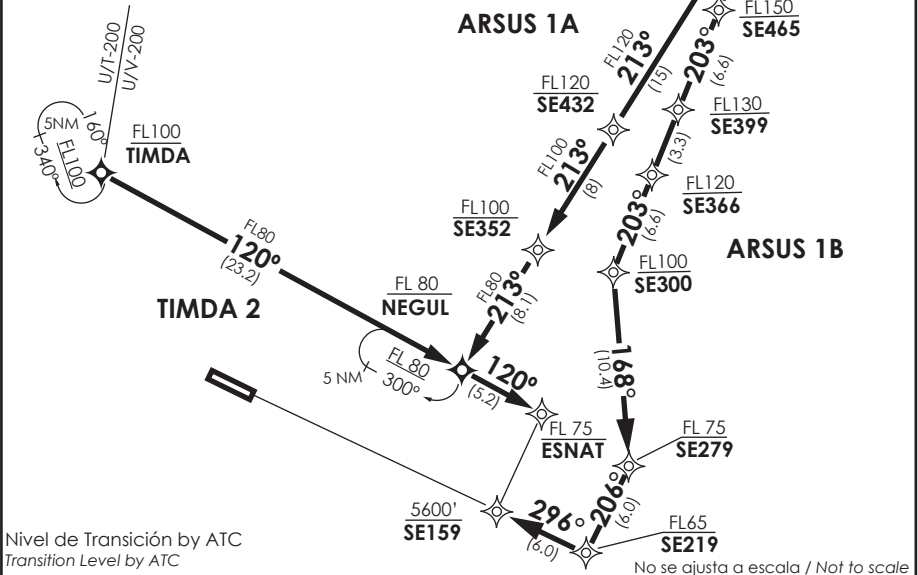


VAR 0.1° W 2020

SANTIAGO
 CTL 129.1

LA SERENA
 APP 135.35
 TWR 129.4

Notas
 1.- Requiere aprobación RNAV1 o RNP1.
 2.- Requiere GNSS.
 Notas
 1.- RNAV1 or RNP1 approval required.
 2.- GNSS required.



STAR TIMDA 2 / ARSUS 1A / ARSUS 1B RNAV

TIMDA 2: Desde TIMDA proceder via NEGUL-ESNAT. Cruzar TIMDA FL100 o superior, NEGUL FL80 o superior, ESNAT FL75 o superior, luego según autorización ATC.

TIMDA 2: From TIMDA proceed via NEGUL-ESNAT. Cross TIMDA at or above FL100, NEGUL at or above FL80, ESNAT at or above FL75, then according to ATC clearance.

ARSUS 1A: Desde ARSUS proceder via SE432-SE352-NEGUL-ESNAT. Cruzar ARSUS FL160 o superior, SE432 FL120 o superior, SE352 FL100 o superior, NEGUL FL80 o superior, ESNAT FL75 o superior, luego según autorización ATC.

ARSUS 1A: From ARSUS proceed via SE432-SE352-NEGUL-ESNAT. Cross ARSUS at or above FL160, SE432 at or above FL120, SE352 at or above FL100, NEGUL at or above FL80, ESNAT at or above FL75, then according to ATC clearance.

ARSUS 1B: Desde ARSUS proceder via SE465-SE399-SE366-SE300-SE279-SE219-SE159. Cruzar ARSUS FL160 o superior, SE465 FL150 superior, SE399 FL130 o superior, SE366 FL120 o superior, SE300 FL100 o superior, SE279 FL75 o superior, SE219 FL65 o superior, SE159 5600 Ft o superior, luego según autorización ATC.

ARSUS 1B: From ARSUS proceed via SE465-SE399-SE366-SE300-SE279-SE219-SE159. Cross ARSUS at or above FL160, SE465 at or above FL150, SE399 at or above FL130, SE366 at or above FL120, SE300 at or above FL100, SE279 at or above FL75, SE219 at or above FL65, SE159 at or above 5600 Ft, then according to ATC clearance.

DASA / SECCION AIB-MAP