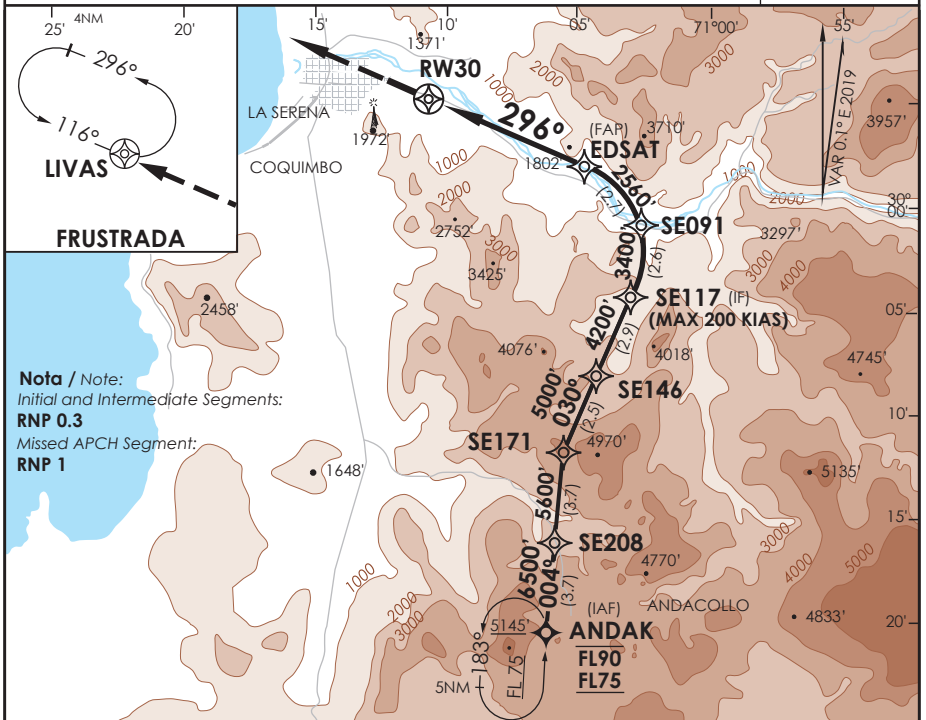


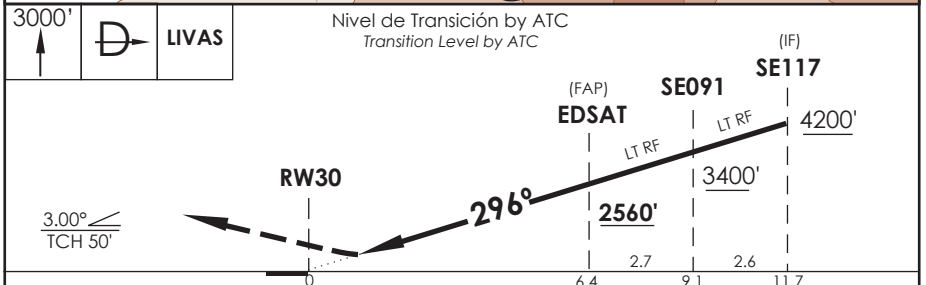
AD. LA FLORIDA LA SERENA - CHILE

SCSE IAC 4 RNAV (RNP) Z Rwy 30

APP LA SERENA La Serena Approach	135.35	TORRE LA SERENA La Serena Tower	129.4	CONTROL TERRESTRE Ground Control	121.9
RNAV	FINAL APCH CRS 296°	MNM ALT EDSAT 2560'	DA/H ver mínimos DA/H refer to minimums	AD Elev. THR30 Elev.	481' 481'
APCH FRUSTRADA: Ascenso 3000' directo a LIVAS, luego según autorización ATC.					9500 FT MSA 25 NM RW30
Missed Apch: Climb to 3000' direct to LIVAS, then according to ATC clearance.					



Nota / Note:
Initial and Intermediate Segments:
RNP 0.3
Missed APCH Segment:
RNP 1



A B C D	DIRECTO RWY 30 <i>Straight in RWY 30</i>		RNP AR RWY 30 SCSE: Requiere RF. Para sistemas Baro VNAV no compensados proc NA bajo 6.8°C o sobre 48°C. Autorización requerida de acuerdo a DAN 06-22. RF required. For uncompensated Baro VNAV systems procedure NA below 6.8°C or above 48°C. Authorization required according to DAN 06-22.			
	RNP 0.15 DA 731' (250')	RNP 0.30 DA 900' (419')				
	1.6 Km	1.6 Km				
	DA 745' (264') 1.6 Km	DA 1172' (691') 3.2 Km				
Veloc. Terrestre Kts	80	100	120	140	160	MNM ALTN RNP 0.30: VER PAG GEN 2.19 See pag 2.19
Angulo DES 3.0° FPM	425'	531'	637'	743'	849'	RQR AUTORIZACIÓN ESPECIAL PARA ACFT Y CREW
MAPt en DA						SPECIAL ACFT AND AIRCREW AUTHORIZATION RQRD

DASA / SECCION IAS-MAP