
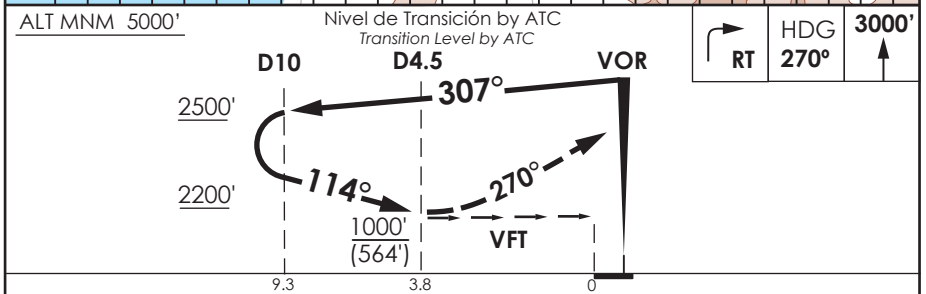
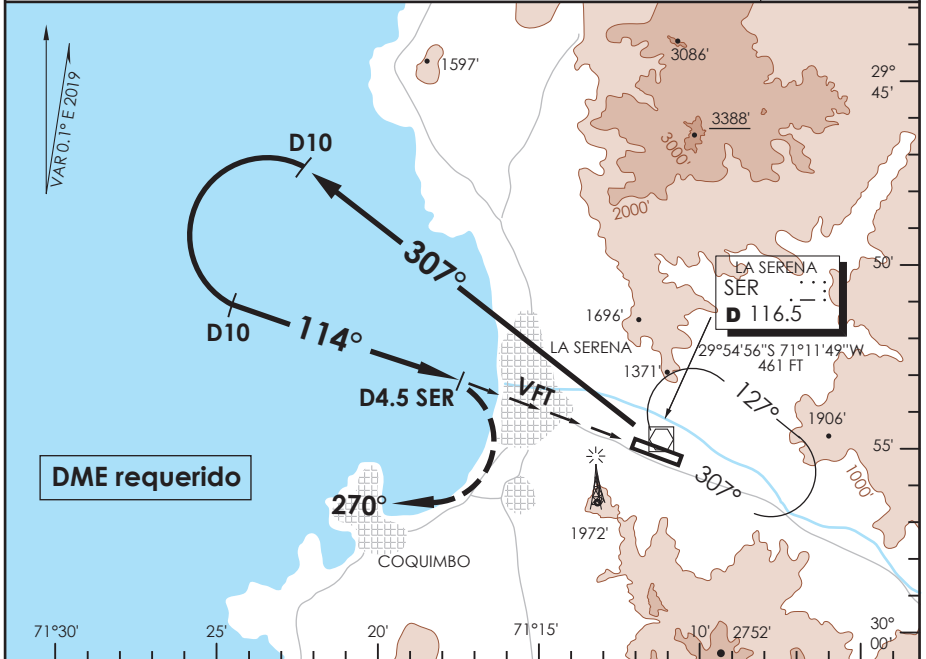


AD. LA FLORIDA LA SERENA - CHILE

SCSE IAC 2
VOR Y Rwy 12

APP LA SERENA La Serena Approach		135.35	TORRE LA SERENA La Serena Tower		129.4	CONTROL TERRESTRE Ground Control		121.9
VOR SER 116.5	FINAL APCH CRS 114°	WO FAF		MDA(H) 1000'(564')	AD Elev. 481'	THR12 Elev. 436'		 MSA 25 NM SER
APCH FRUSTRADA: Viraje derecha inmediato HDG 270°, ascenso 3000', luego según autorización ATC. Missed Apch: Right turn immediately HDG 270°, climb to 3000', then according to ATC clearance.								



CATEGORIA	DIRECTO RWY 12 <i>Straight in RWY 12</i>	CIRCULANDO NORTE * <i>Circling North</i>	ALTN <i>Alternate Minimums</i>
	MDA 1000' (564') CEIL 800 Ft		
A	3.6 Km	1000'(519') CEIL 800'	VER PAG. GEN 2.19
B		1780'(1299') CEIL 1400'	
C	4.0 Km	2120'(1639') CEIL 1800'	
D			

* Aproximación Circulando NA de noche / *Circling Approach not authorized at night*