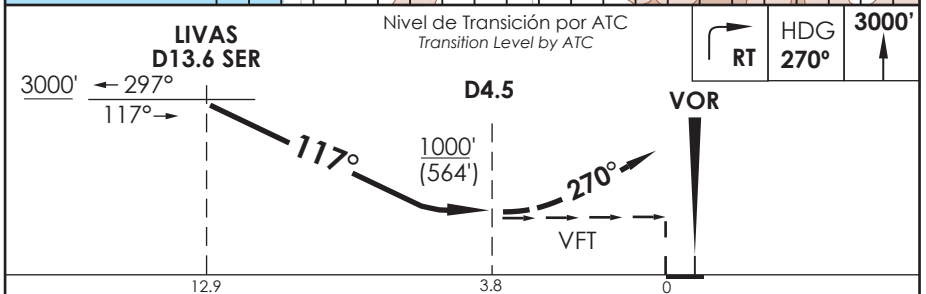
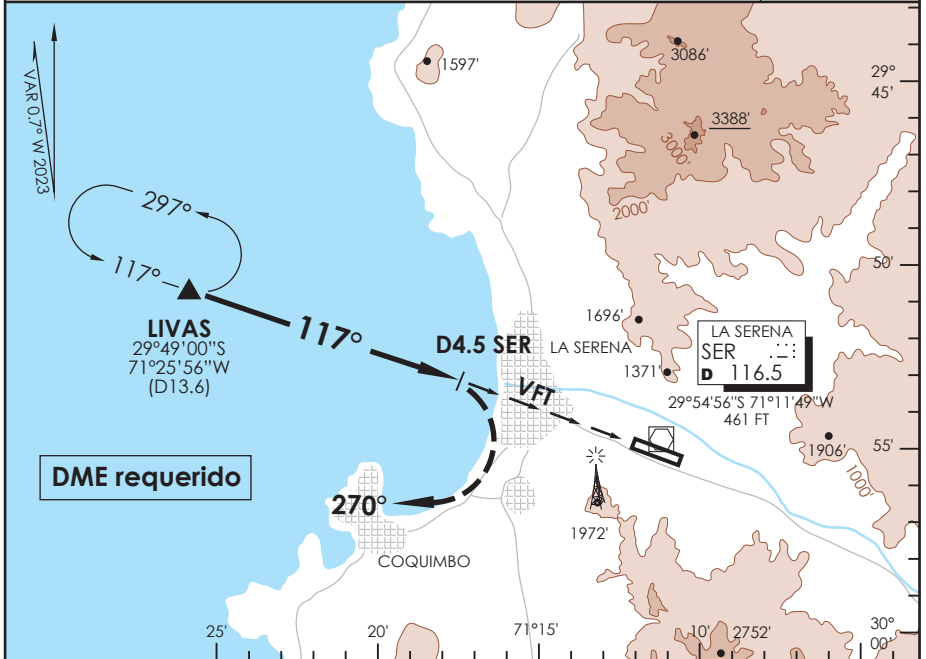


AD. LA FLORIDA LA SERENA - CHILE

SCSE IAC 1
VOR Z Rwy 12

RDR LA SERENA La Serena Radar	135.35	TORRE LA SERENA La Serena Tower	129.4	CONTROL TERRESTRE Ground Control	121.9
VOR SER 116.5	FINAL APCH CRS 117°	WO FAF	MDA(H) 1000'(564')	AD Elev. THR12 Elev. 481'	<div style="border: 1px solid black; border-radius: 50%; width: 60px; height: 60px; display: flex; align-items: center; justify-content: center; margin: 0 auto;"> 9500 FT </div> <p>MSA 25 NM SER</p>
<p>APCH FRUSTRADA: Viraje derecha inmediato HDG 270°, ascenso 3000', luego según autorización ATC. <i>Missed Apch: Right turn immediately HDG 270°, climb to 3000', then according to ATC clearance.</i></p>					



CATEGORÍA	DIRECTO RWY 12 <i>Straight in RWY 12</i>	CIRCULANDO NORTE * <i>Circling North</i>	ALTN <i>Alternate Minimums</i>
	MDA 1000' (564') CEIL 800 FT		
A	3.6 Km	1000'(519') CEIL 800'	3.6 Km
B		1780'(1299') CEIL 1400'	
C	4.0 Km	2120'(1639') CEIL 1800'	VER PAG. GEN 2.19
D			

* Aproximación Circulando NA de noche / *Circling Approach not authorized at night*