
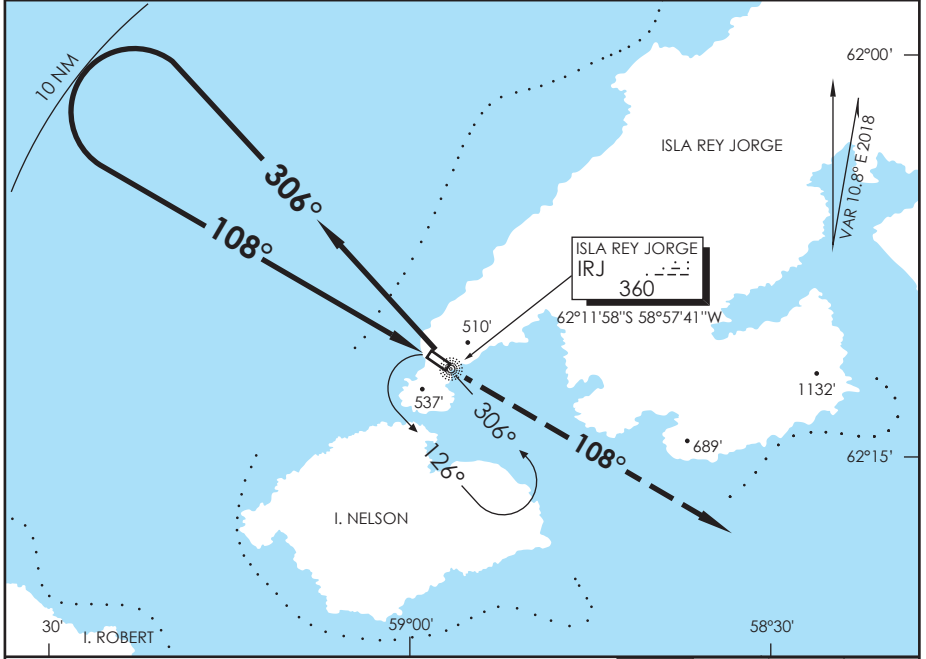


AD.TENIENTE RODOLFO MARSH M.  
**ANTÁRTICA - CHILE**

SCRM IAC 4  
**NDB Rwy 11**

APP MARSH Marsh Approach		119.7	TORRE MARSH Marsh Tower		118.1	CONTROL TERRESTRE Ground Control	
NDB IRJ <b>360</b>	FINAL APCH CRS <b>108°</b>	<b>WO FAF</b>		MDA <b>860' (713')</b>	AD Elev. THR 11 Elev.	<b>147'</b> <b>142'</b>	 MSA 25 NM IRJ
APCH FRUSTRADA: Ascenso 3500' HDG 108°, regrese derecha a NDB IRJ, ingrese a HLDG 306° izquierdo. Missed Apch: Climb to 3500' on HDG 108°, right turn to IRJ VOR, enter on HLDG 306° left.							

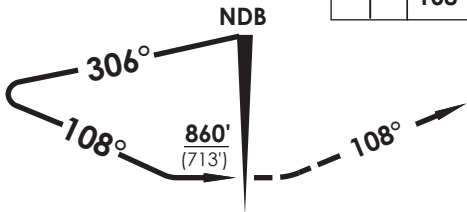


ALT MNM 3500' Nivel de Transición by ATC / Transition Level by ATC

3500' HDG 108° RT IRJ 360

LEFT DES DENTRO DE 10 NM 2000'

NDB



0 1.2

CATEGORÍA	DIRECTO RWY 11 <i>Straight in RWY 11</i>		CIRCULANDO SUROESTE <i>Circling Southwest</i>	CIRCULANDO NORESTE <i>Circling Northeast</i>
	MDA <b>860' (713')</b>			
A	1.6 Km		860' (713') 1.6 Km	860' (713') 1.6 Km
B				
C	3.2 Km		920' (773') 3.2 Km	920' (773') 3.6 Km

Possible icebergs in the approach area, readings from Radioaltimeter can be erratic over ice or snow.

Veloc. Terrestre Kts	90	120	150	180	210

DASA / SECCION AIS-MAP