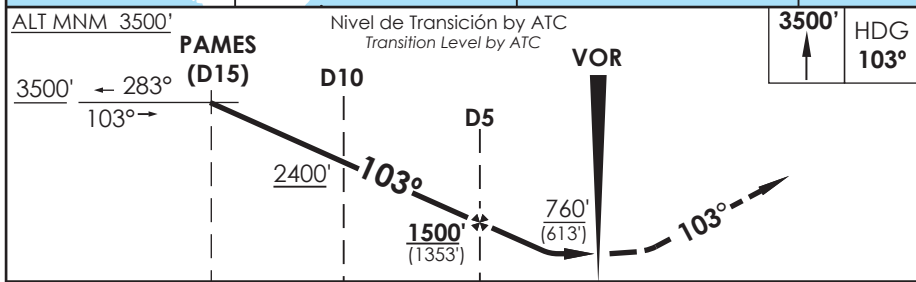
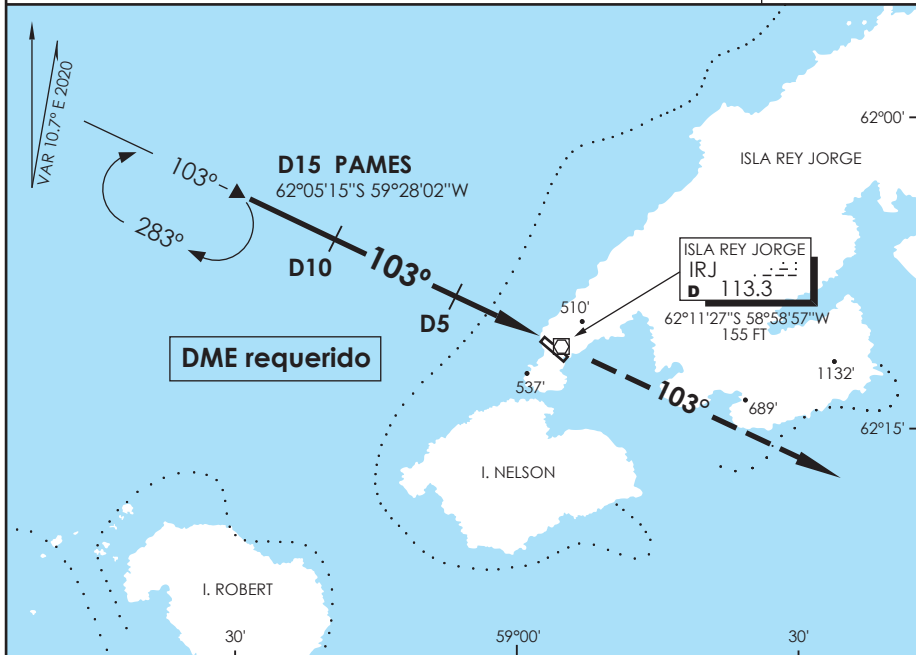


ANTARTICA - CHILE

VOR Rwy 11

APP MARSH Marsh Approach	119.7	TORRE MARSH Marsh Tower	118.1	CONTROL TERRESTRE Ground Control
VOR IRJ 113.3	FINAL APCH CRS 103°	MNM ALT D5 1500' (1353')	MDA 760' (613')	AD Elev. THR 11 Elev. 147' 142'
APCH FRUSTRADA: Ascenso 3500' HDG 103°, luego según autorización ATC. <i>Missed Apch: Climb on HDG 103°, then according to ATC clearance.</i>				<div style="border: 1px solid black; border-radius: 50%; width: 50px; height: 50px; margin: 0 auto; display: flex; align-items: center; justify-content: center;">6000 FT</div> <p>MSA 25 NM IRJ</p>



C A T E G O R Í A	DIRECTO RWY 11 <i>Straight in RWY 11</i>		CIRCULANDO SUROESTE <i>Circling Southwest</i>	CIRCULANDO NORESTE <i>Circling Northeast</i>
	MDA 760' (613')			
	A	1.6 Km	760' (613')	840' (693')
	B		860' (713')	860' (713')
C	2.8 Km	(713')	920' (773')	

Posibles témpanos en el área de aproximación, lecturas de Radioaltímetro pueden ser erráticas sobre hielo o nieve.
Possible icebergs in the approach area, readings from Radioaltimeter can be erratic over ice or snow.

Veloc. Terrestre Kts	90	120	150	180	210