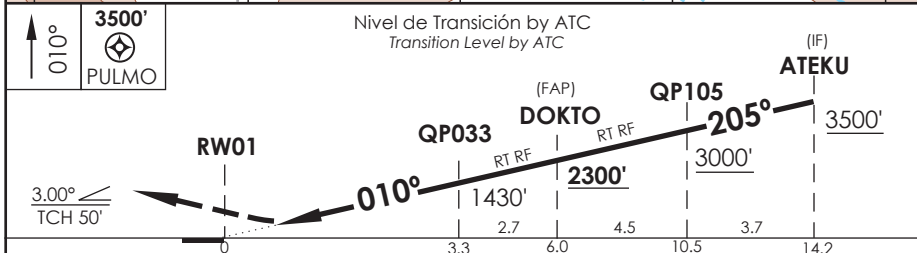
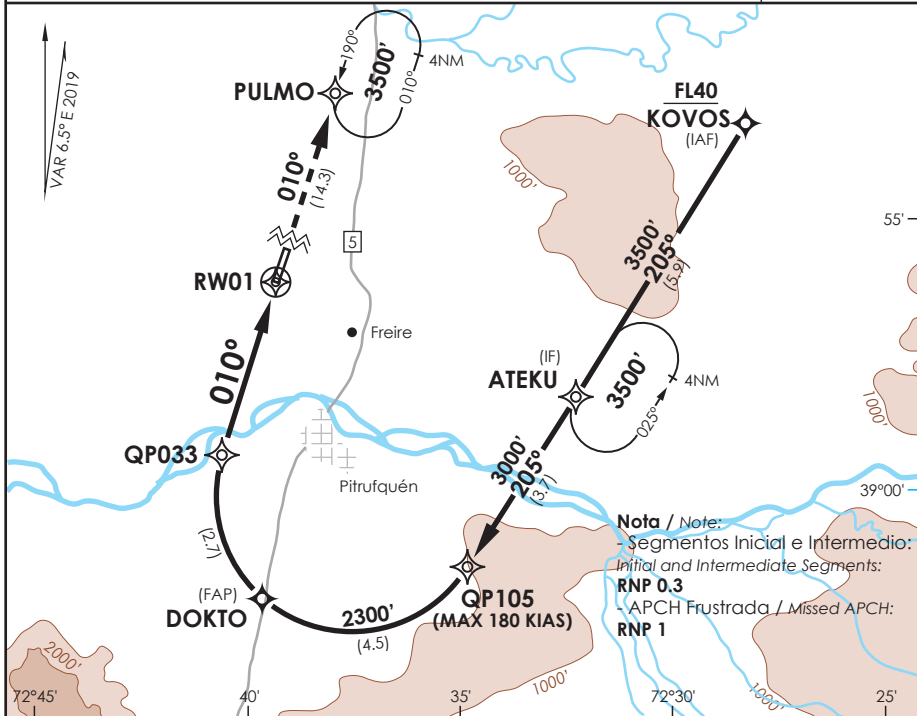


TEMUCO RADAR Temuco Radar	118.7 / 119.2	TORRE TEMUCO Temuco Tower	118.4	CONTROL TERRESTRE Ground Control	121.6
RNAV	FINAL APCH CRS 010°	MNM ALT DOKTO 2300'	DA/H ver mínimos DA/H refer to minimums	AD Elev. 321' THR01 Elev. 321'	5000 FT MSA 25 NM RW01
APCH FRUSTRADA: Ascenso en TR010° directo a PULMO, 3500' e ingresar en HLDG. Missed Apch: Climb on TR010° direct to PULMO, 3500' and enter in HLDG.					



C A B C D	DIRECTO RWY 01 Straight in RWY 01				RNP AR RWY 01 SCQP: Requiere RF. Para sistemas Baro VNAV no compensados proc NA bajo -5°C o sobre 54°C. Autorización requerida de acuerdo a DAN 06-22. RF required. For uncompensated Baro VNAV systems procedure NA below -5°C or above 54°C. Authorization required according to DAN 06-22.
	RNP 0.15		RNP 0.30		
	DA 580' (259')	DA 660' (339')			
	CAT D: DA 590' (269')				
	ALSF-2	WO ALSF-2	ALSF-2	WO ALSF-2	
A					
B	0.8 Km	1.6 Km	0.8 Km	1.6 Km	
C					
D					
	Veloc. Terrestre Kts	80 100	120 140	160	
	Angulo DES 3° FPM	425' 531'	637' 743'	849'	
	MAPt en DA				
				REQUIERE AUTORIZACIÓN ESPECIAL PARA ACFT Y CREW SPECIAL ACFT AND AIRCREW AUTHORIZATION REQUIRED	