

# AD. LA ARAUCANIA FREIRE - CHILE

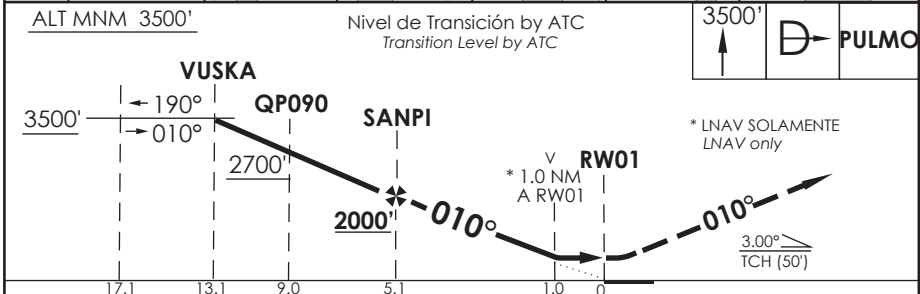
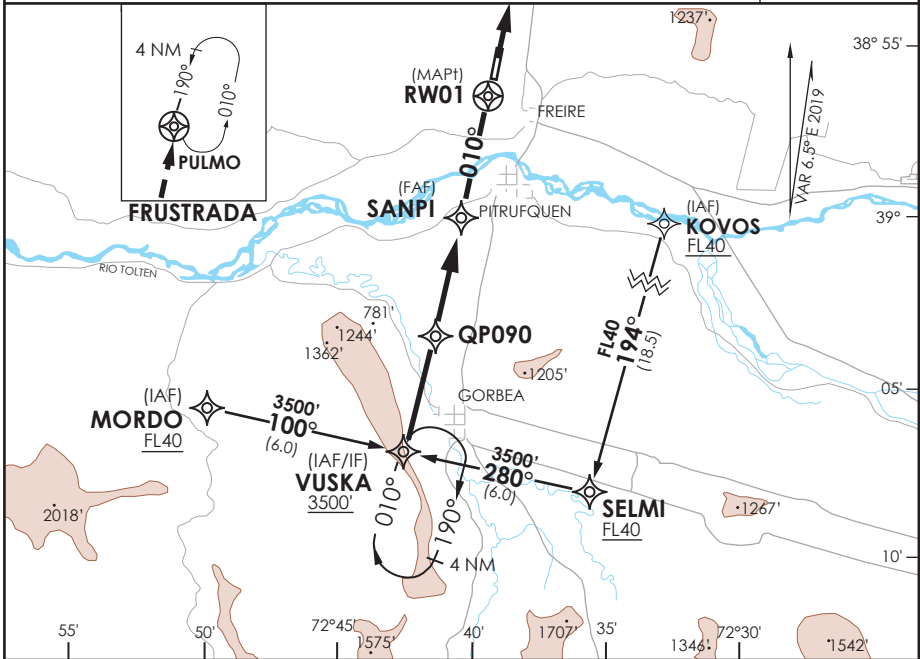
## SCQP IAC 7 RNAV (GNSS) Y Rwy 01

TEMUCO RADAR Temuco Radar	118.7 / 119.2	TORRE TEMUCO Temuco Tower	118.4	CONTROL TERRESTRE Ground Control	121.6
------------------------------	---------------	------------------------------	-------	-------------------------------------	-------

<b>RNAV</b>	FINAL APCH CRS <b>010°</b>	MNM ALT SANPI <b>2000'</b>	LNAV/VNAV DA(H) <b>640' (319')</b>	AD Elev THR 01 Elev <b>321'</b>	5000 FT
-------------	-------------------------------	-------------------------------	---------------------------------------	------------------------------------	---------

APCH FRUSTRADA: Ascenso a 3500' directo PULMO, ingreso HLDG 190° izquierda o según autorización ATC.  
 Missed Apch: Climb to 3500' direct PULMO, enter on HLDG 190° left or according to ATC clearance.

MSA 25 NM RWY01



CATEGORIA	DIRECTO RWY 01 <i>Straight in RWY 01</i>				CIRCULANDO Circling	ALTN Alternate Minimums
	LNAV/VNAV DA 640' (319')		LNAV MDA 700' (379')			
	ALSF-2	WO ALSF-2	ALSF-2	WO ALSF-2		
A	0.8 Km	1.6 Km	0.8 Km	1.6 Km	760' (439')	1.6 Km
B			860' (539')	2.4 Km		
C			960' (639')	3.2 Km		
D						

- Requiere aprobación RNP APCH.  
 - RNP APCH approval RQRD.

Para sistemas Baro VNAV no compensados proc NA bajo -10°C o sobre 47°C.  
 For uncompensated Baro VNAV systems procedure NA below -10°C or above 47°C.

Veloc. Terrestre Kts	80	100	120	140	160
Angulo DES 3°	425'	531'	637'	743'	849'
MAPt en RW01					

DASA / SECCION AS-MAP