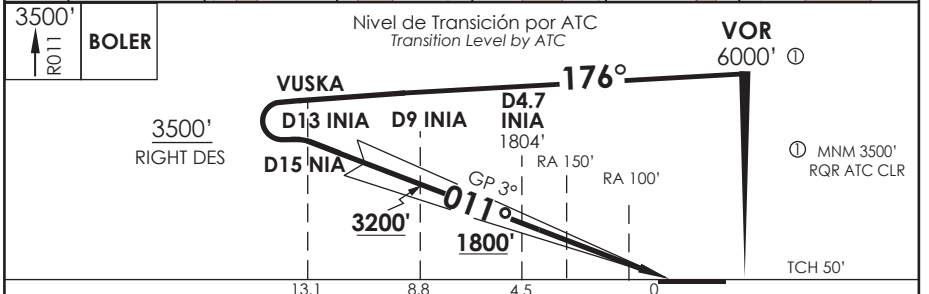
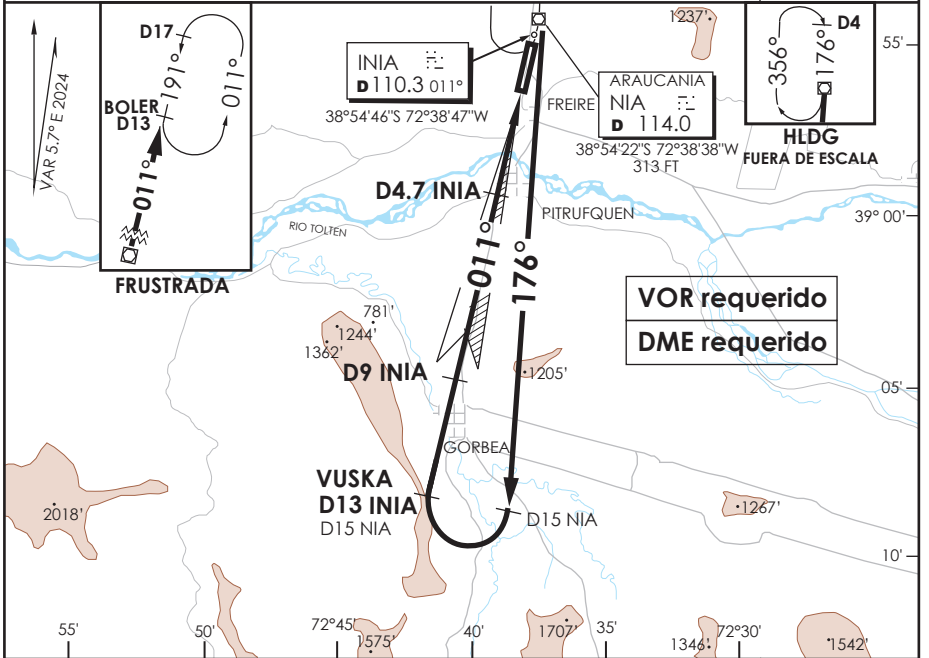


# AD. LA ARAUCANIA FREIRE - CHILE

SCQP IAC 3  
ILS X Rwy 01

TEMUCO RADAR Temuco Radar	119.2/128.7	TORRE TEMUCO Temuco Tower	118.4	CONTROL TERRESTRE Ground Control	121.6
LOC INIA <b>110.3</b>	FINAL APCH CRS <b>011°</b>	MNM ALT D4.7 <b>1800'</b>	CAT II & IIA/B De acuerdo a CAT According to CAT	AD Elev THR 01 Elev	<b>321'</b> <b>321'</b>
APCH FRUSTRADA: Ascenso a 3500' en R011 NIA directo BOLER D13 NIA, ingrese HLDG 191° izquierda o según autorización ATC. <i>Missed Apch: Climb to 3500' on R011 NIA, direct to BOLER D13 NIA, enter HLDG 191° left or according to ATC clearance</i>					5000 FT MSA 25 NM NIA



A B C D	<b>** DIRECTO RWY 01</b> <i>Straight in RWY 01</i>				Aeronaves operando "FAIL PASSIVE" DA(H) 371' (50 FT) * Aircraft operating "FAIL PASSIVE" DA(H) 371' (50 FT) <b>MNM ALTN VER PAG GEN 2.19</b> ALTN MNM See pag 2.19
	<b>ILS CAT III-B</b> *		<b>ILS CAT III-A</b> *		
	<b>ILS CAT II</b>				
	RA 100' DA 421'(100')		RA 150' DA 471'(150')		
	RVR 150m	RVR 200m	RVR 350m	RVR 500m	

Se requiere certificación de ACFT y Habilitación de Tripulación Especial: DAN 06-02, 06-12  
Special Aircraft and aircrew certification required: DAN 06-02, 06-12

Veloc. Terrestre Kts	80	100	120	140	160	** WO INIA DME PROC NA PROC not authorized without INIA DME
GP 3° FPM	425'	531'	637'	743'	849'	

CAMBIO: VAR  
Change: VAR

DGAC AMDT 98

28 NOVIEMBRE 2024

DASA / SECCION TAB-MAP