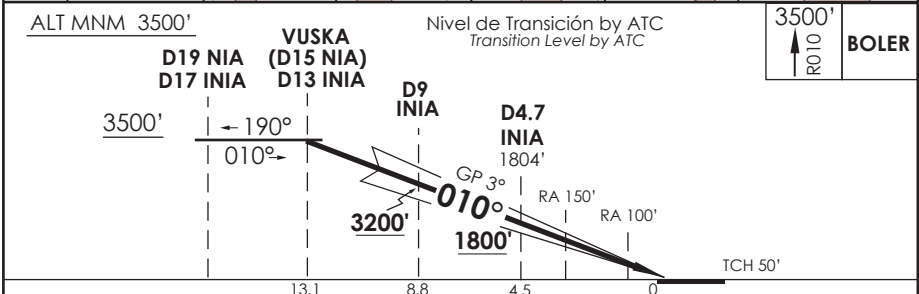
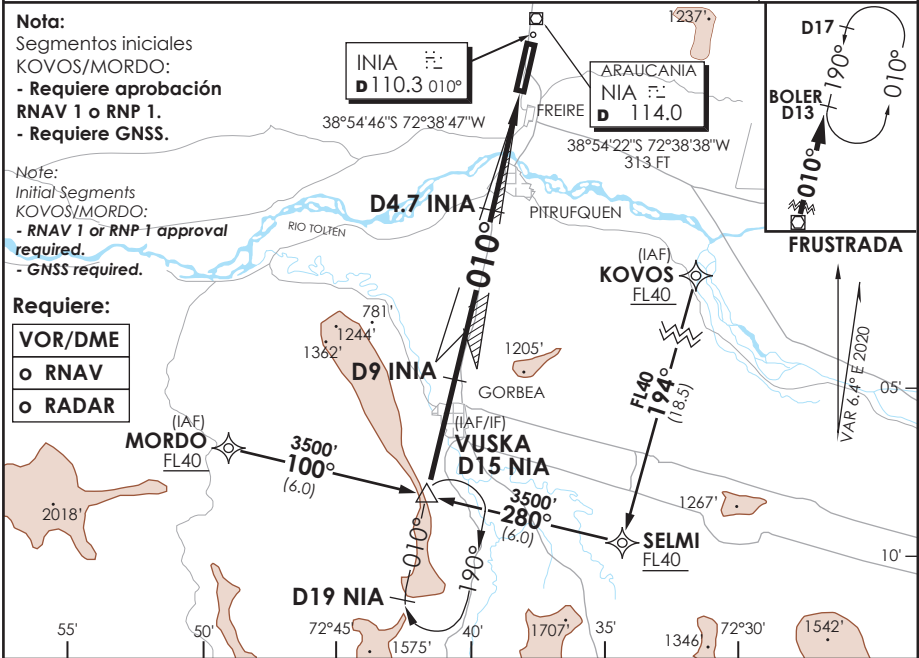


AD. LA ARAUCANIA FREIRE - CHILE

SCQP IAC 1 ILS Z Rwy 01

TEMUCO RADAR Temuco Radar	118.7/119.2	TORRE TEMUCO Temuco Tower	118.4	CONTROL TERRESTRE Ground Control	121.6
LOC INIA 110.3	FINAL APCH CRS 010°	MNM ALT D4.7 1800'	CAT II & IIA/B De acuerdo a CAT According to CAT	AD Elev 321'	THR 01 Elev 321'
APCH FRUSTRADA: Ascenso a 3500' en R010 NIA directo BOLER D13 NIA, ingreso HLDG 190° izquierda o según autorización ATC. Missed Apch: Climb to 3500' on R010 NIA, direct to BOLER D13 NIA, enter HLDG 190° left or according to ATC clearance					5000 FT MSA 25 NM NIA



CATEGORIA	** DIRECTO RWY 01 Straight in RWY 01				Aeronaves operando "FAIL PASSIVE" DA(H) 371' (50 FT) * Aircraft operating "FAIL PASSIVE" DA(H) 371' (50 FT)
	ILS CAT III-B *		ILS CAT III-A *		
			ILS CAT II		
			RA 100' DA 421'(100')	RA 150' DA 471'(150')	
A					
B	RVR 150m	RVR 200m	RVR 350m	RVR 500m	
C					
D					MNM ALTN VER PAG GEN 2.19 ALTN MNM See pag 2.19

Se requiere certificación de ACFT y Habilitación de Tripulación Especial: DAN 06-02, 06-12
Special Aircraft and aircrew certification required: DAN 06-02, 06-12

Veloc. Terrestre Kts	80	100	120	140	160	** WO INIA DME PROC NA
GP 3° FPM	425'	531'	637'	743'	849'	PROC not authorized without INIA DME

CAMBIO: VAR
Change: VAR

DGAC AMDT 85

13 AGOSTO 2020