
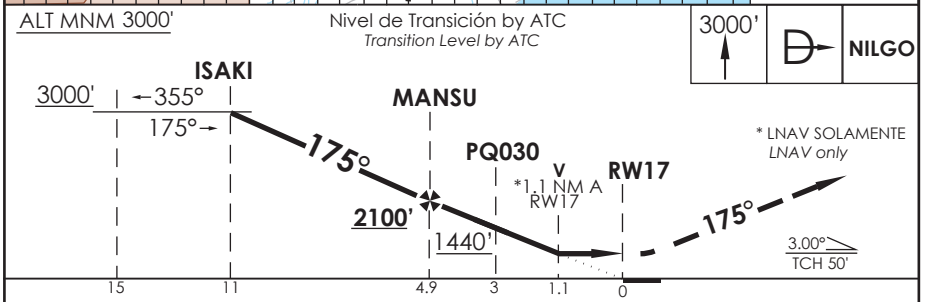
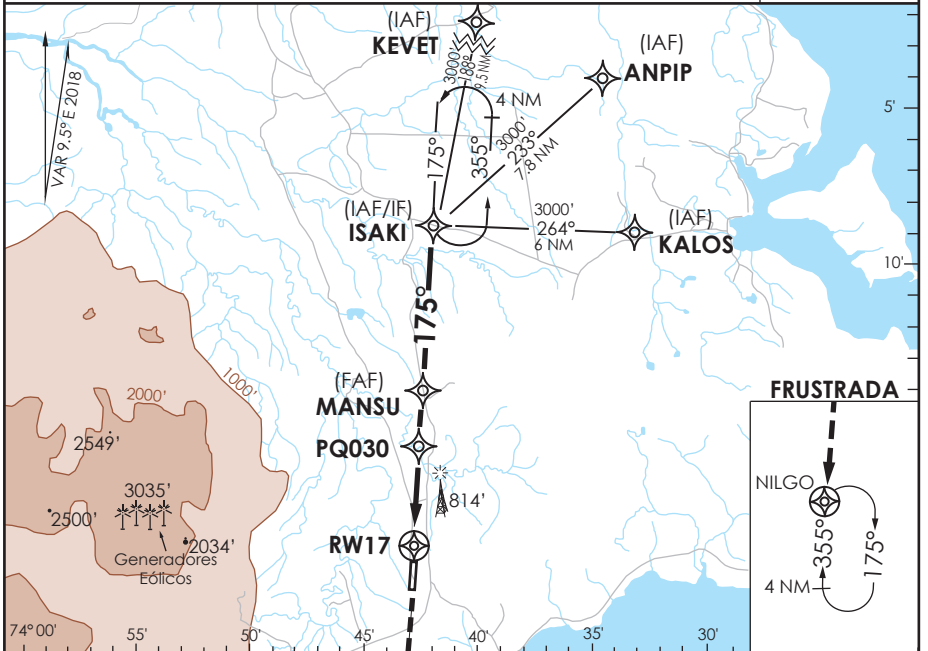


AD. MOCOPULLI DALCAHUE - CHILE

SCPQ IAC 5
RNAV (GNSS) Rwy 17

APP PUERTO MONTT RADAR Puerto Montt Radar Approach 121.3		CHILOÉ Torre CHILOÉ Tower 118.4	CONTROL TERRESTRE Ground Control 121.6
RNAV	FINAL APCH CRS 175°	MNM MANSU 2100'	LNAV/VNAV DA(H) 880' (388')
AD Elev. 528' THR 17 Elev. 492'			 MSA 25 NM RW 17
APCH FRUSTRADA: Ascenso 3000' directo NILGO, ingreso HLDG 355° derecho o según autorización ATC. Missed Apch: Climb to 3000' direct to NILGO, enter on HLDG 355° right or according to ATC clearance.			



CATEGORÍA	DIRECTO RWY 17 Straight in RWY 17		CIRCULANDO Circling	ALTN Alternate Minimums
	LNAV/VNAV DA 880' (388')	LNAV MDA 880' (388')		
A	1.6 Km	1.6 Km	880' (352')	VER PAG. GEN 2.19 SEE PAGE GEN 2.19
B			1.6 Km	
C	2.0 Km	2.0 Km	1120' (592')	
D			2.4 Km 3.2 Km	

- Requiere aprobación RNP APCH. - RNP APCH approval RQRD.					Para sistemas Baro VNAV no compensados proc NA bajo -10°C o sobre 47°C. For uncompensated Baro VNAV systems procedure NA below -10°C or above 47°C.					
Veloc. Terrestre Kts	80	100	120	140	160					
Angulo DES 3° FPM	425'	531'	637'	743'	849'					
MÁPI en RW17										

DASA / SECCION AS-MAP