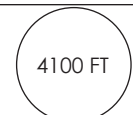
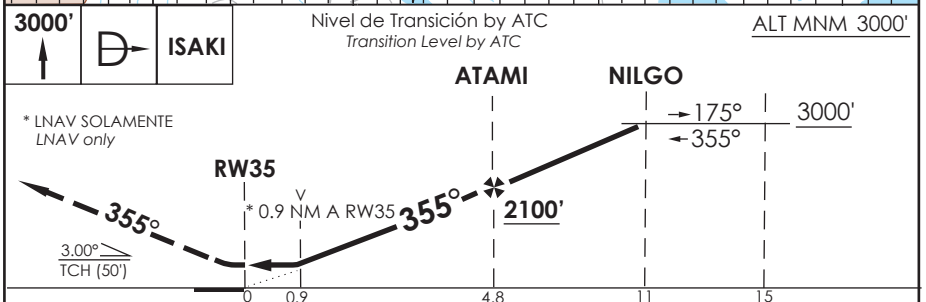
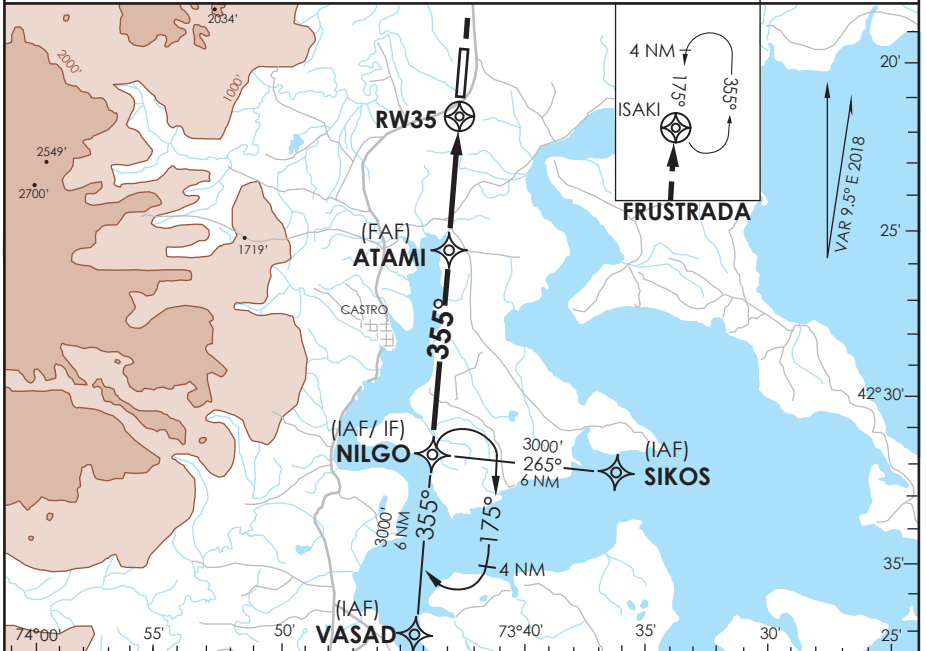


# AD. MOCOPULLI DALCAHUE - CHILE

# SCPQ IAC 4 RNAV (GNSS) Rwy 35

|   |                                    |   |                                      |  |   |
|---|------------------------------------|---|--------------------------------------|--|---|
| APP PUERTO MONTT RADAR<br>Puerto Montt Radar Approach 121.3   | CHILOÉ Torre<br>CHILOÉ Tower 118.4 | CONTROL TERRESTRE<br>Ground Control 121.6 |                                      |  |   |
| <b>RNAV</b>   | FINAL APCH CRS<br><b>355°</b>      | MNM ATAMI<br><b>2100'</b>                 | LNAV/VNAV DA(H)<br><b>830'(302')</b> | AD Elev. <b>528'</b><br>THR 35 Elev. <b>528'</b> | <br>4100 FT<br>MSA 25 NM RW 35 |
| APCH FRUSTRADA: Ascenso 3000' directo ISAKI, ingreso HLDG 175° izquierda o según autorización ATC.<br>Missed Apch: Climb to 3000' direct to ISAKI, enter on HLDG 175° left or according to ATC clearance. |                                    |   |                                      |  |   |



|           |                                   |        |                             |        |                        |                            |        |   |
|-----------|-----------------------------------|--------|-----------------------------|--------|------------------------|----------------------------|--------|---|
| CATEGORÍA | DIRECTO RWY 35 Straight in RWY 35 |        |                             |        | CIRCULANDO<br>Circling | ALTN<br>Alternate Minimums |        |   |
|           | LNAV/VNAV DA <b>830' (302')</b>   |        | LNAV MDA <b>880' (352')</b> |        |                        |                            |        |   |
|           | A                                 | SSALF  | WO SSALF                    | SSALF  | WO SSALF               | 880' (352')                | 1.6 Km | VER PAG.<br>GEN 2.19<br>SEE PAGE GEN 2.19 |
|           | B                                 | 1.2 Km | 1.6 Km                      | 1.2 Km | 1.6 Km                 | 1120' (592')               | 2.4 Km |   |
| C         |                                   |        |                             |        |                        | 3.2 Km                     |        |   |
| D         |                                   |        |                             |        |                        |                            |        |   |

|  |      |      |      |      |  |  |  |  |  |  |
|--|------|------|------|------|--|--|--|--|--|--|
| - Requiere aprobación RNP APCH.<br>- RNP APCH approval RQRD. |      |      |      |      | Para sistemas Baro VNAV no compensados proc NA bajo -10°C o sobre 47°C.<br>For uncompensated Baro VNAV systems procedure NA below -10°C or above 47°C. |  |  |  |  |  |
| Veloc. Terrestre Kts   | 80   | 100  | 120  | 140  | 160  |  |  |  |  |  |
| Angulo DES 3° FPM  | 425' | 531' | 637' | 743' | 849'   |  |  |  |  |  |
| MAPt en RW35   |      |      |      |      |  |  |  |  |  |  |

DASA / SECCION AS-MAP