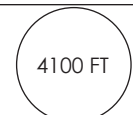
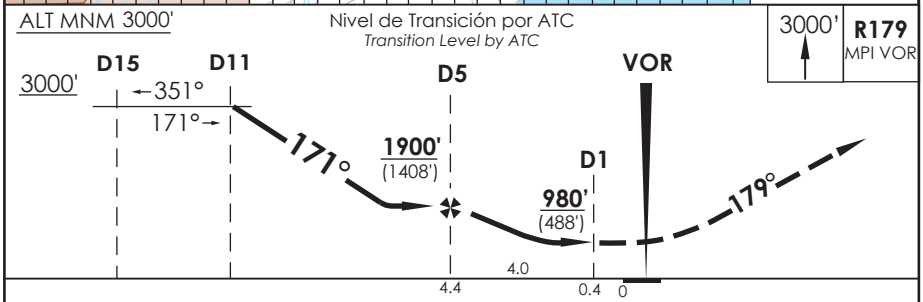
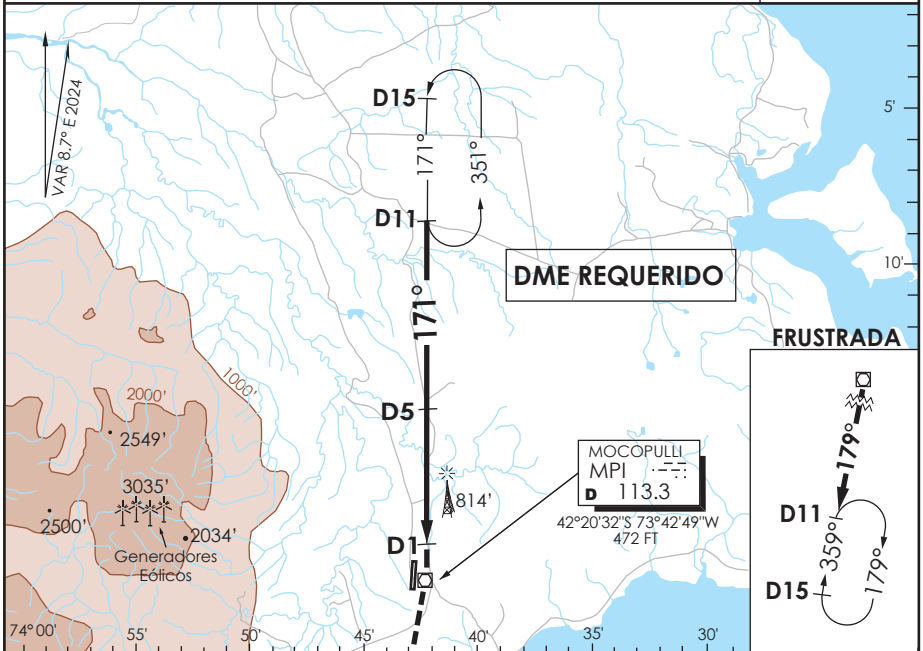


AD. MOCOPULLI DALCAHUE - CHILE

SCPQ IAC 3
VOR Rwy 17

APP PUERTO MONTI RADAR Puerto Montt Radar Approach 119.5 / 126.6		CHILOÉ Torre CHILOÉ Tower 118.4		CONTROL TERRESTRE Ground Control 121.6	
VOR MPI 113.3	FINAL APCH CRS 171°	MNM ALT D5 1900'(1408')	MDA 980'(488')	AD Elev. 528' THR 17 Elev. 492'	 4100 FT MSA 25 NM MPI
APCH FRUSTRADA: Ascenso 3000FT R179 VOR MPI, ingreso HLDG BTN D11 y D15 S 359° derecho o según autorización ATC. Missed Apch: Climb to 3000FT on R179 MPI VOR/DME, enter on HLDG BTN D11 and D15 S 359°, right or according to ATC clearance.					



Categoría	DIRECTO RWY 17 <i>Straight in RWY 17</i>	CIRCULANDO <i>Circling</i>	ALTN <i>Alternate Minimums</i>
	MDA 980' (488')		
A	1.6 Km	980' (452')	VER PAG. GEN 2.19 SEE PAGE GEN 2.19
B		1.6 Km	
C		2.4 Km	
D		3.2 Km	

Veloc. Terrestre Kts	80	100	120	140	160
Angulo DES 3.0° FPM	425'	531'	637'	743'	849'
MIN:SEC (FAF TO MAP1 4.0)	3:00	2:24	2:00	1:43	1:30

DASA / SECCION AS-MAP