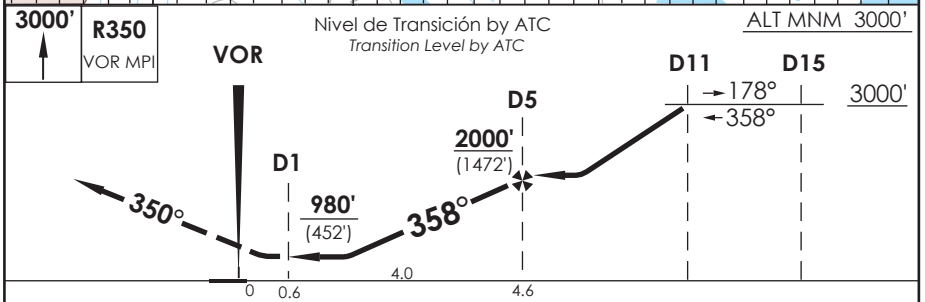
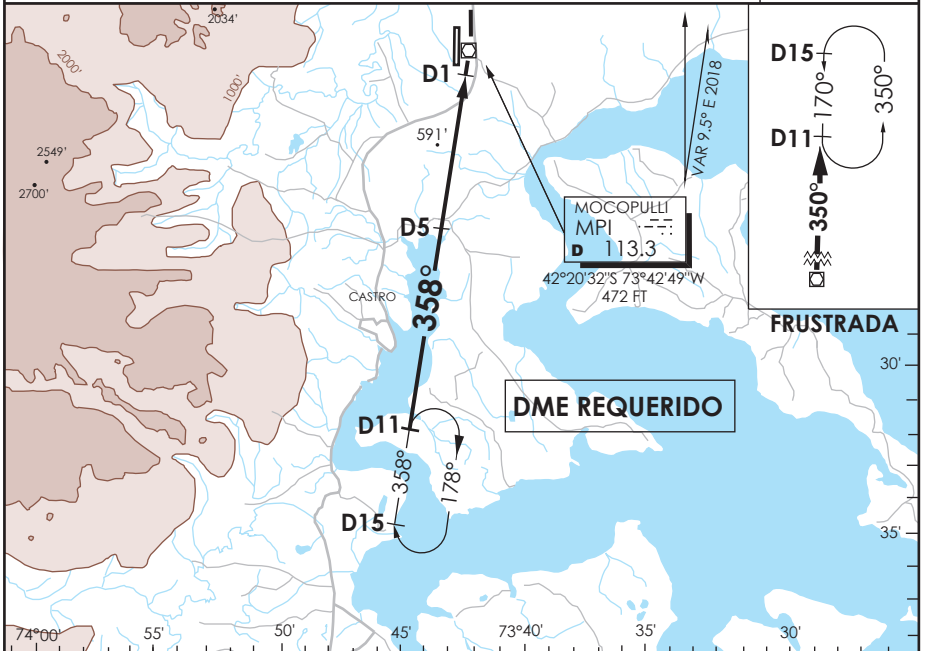


AD. MOCOPULLI DALCAHUE - CHILE

SCPQ IAC 2
VOR Rwy 35

APP PUERTO MONTT RADAR Puerto Montt Radar Approach		121.3	CHILOÉ Torre CHILOÉ Tower		118.4	CONTROL TERRESTRE Ground Control		121.6
VOR MPI 113.3	FINAL APCH CRS 358°	MNM ALT D5 2000' (1472')	MDA 980' (452')		AD Elev. 528'	THR 35 Elev. 528'		 MSA 25 NM MPI
APCH FRUSTRADA: Ascenso 3000FT R350 VOR MPI, ingrese HLDG BTN D11 y D15 N 170° izquierda o según autorización ATC. Missed Apch: climb to 3000FT on R350 MPI VOR, enter on HLDG BTN D11 and D15 N 170° left or according to ATC clearance.								



CATEGORÍA	DIRECTO RWY 35 Straight in RWY 35		CIRCULANDO Circling	ALTN Alternate Minimums	
	MDA 980' (452')				
		SSALF	WO SSALF		
	A	1.2 Km	1.6 Km	980' (452')	VER PAG. GEN 2.19 SEE PAGE GEN 2.19
B	2.0 Km	2.4 Km	1.6 Km		
C			2.4 Km		
D			3.2 Km		

Veloc. Terrestre Kts	80	100	120	140	160
Angulo DES 3.0° FPM	425'	531'	637'	743'	849'
MIN:SEC (FAFTO MAPT 4.0)	3:00	2:24	2:00	1:43	1:30

DASA / SECCION AS-MAP