


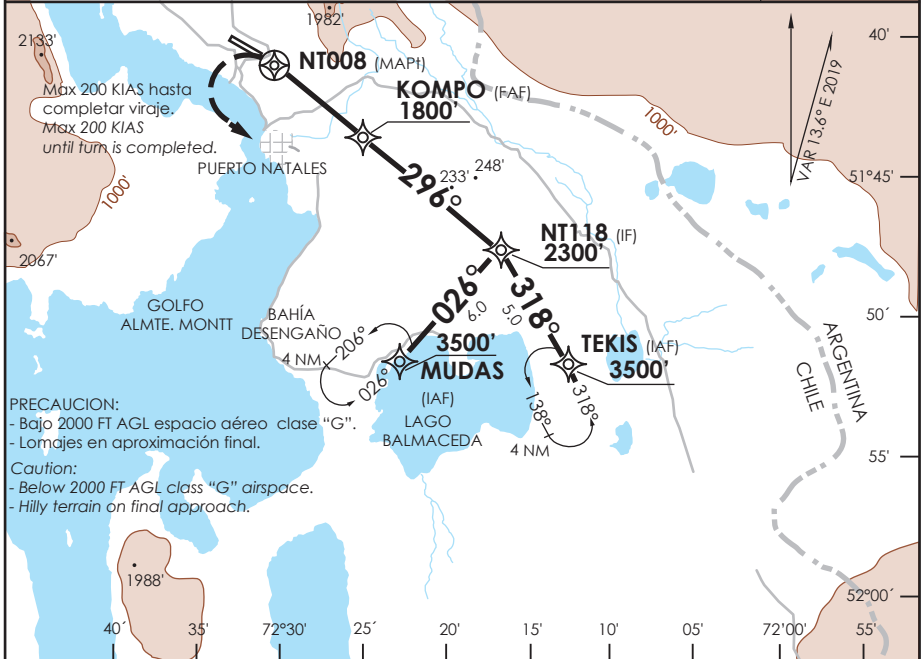
AD. TTE. JULIO GALLARDO
NATALES - CHILE


SCNT IAC 2
RNAV (GNSS) RWY 28

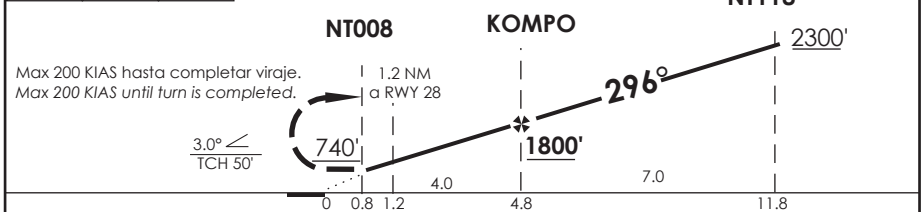
ACC PUNTA ARENAS Punta Arenas Center	123.9/128.1	NATALES INFORMACION Natales Information		127.7	
RNAV	FINAL APCH CRS 296°	MNM ALT KOMPO 1800'	LNAV MDA(H) 740'(522')	AD Elev. THR 28 Elev. 218'	

APCH FRUSTRADA: Viraje izquierda en ascenso para 3500' directo TEKIS
 ingrese HLDG 318° izquierdo o según autorización ATC.
 Missed Apch: Left turn climbing to 3500' direct to TEKIS, enter on HLDG 318° left or according to ATC clearance.

MSA 25 NM RWY28



3500'  **TEKIS** Nivel de Transición by ATC SCCI / Transition Level by ATC SCCI **ALT MNM 3500'**



CATEGORIA	DIRECTO RWY 28 Straight in RWY 28*	CIRCULANDO SUROESTE Circling Southwest		ALTN Alternate Minimums	
	LNAV MDA 740' (522')				
A	1.6 Km	800' (582')	1.6 Km	VER PAG. GEN 2.19	
B					
C		960' (742')			3.6 Km
- Requiere aprobación RNP APCH. * Desalineado 10° respecto a RCL - RNP APCH approval QRDR.		NGT LDG RWY 28 NA WO PAPI			
Veloc. Terrestre Kts	80	100	120	140	160
Angulo DES 3.0° FPM	425'	531'	637'	743'	849'
MAPt en NT008					

DASA / SECCION AIS-MAP