

**OSORNO - CHILE**

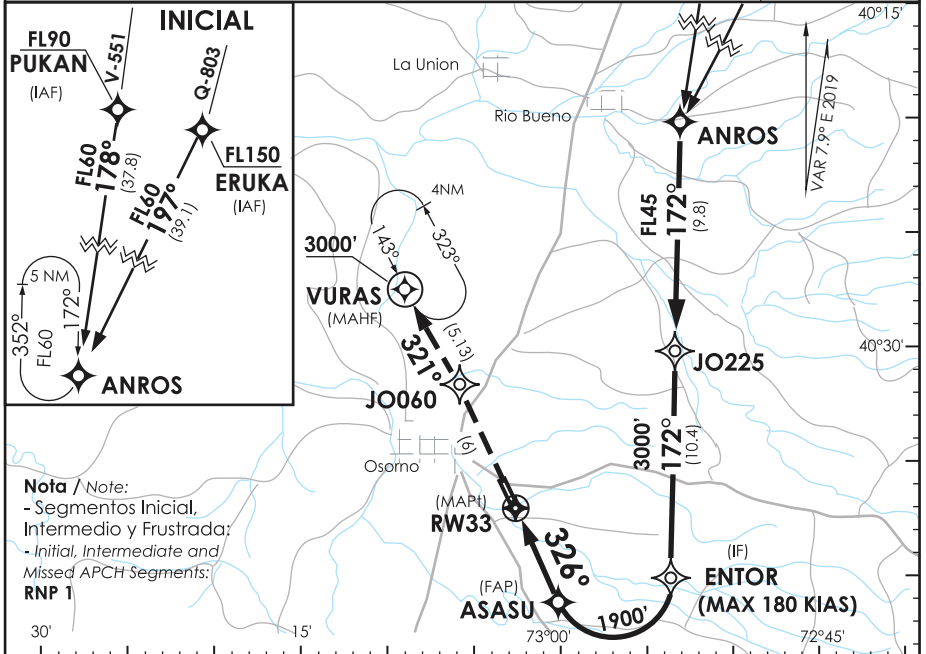
**RNAV (RNP) Z Rwy 33**

ACC PTO. MONTT Puerto Montt Center	121.3	TORRE OSORNO Osorno Tower	118.9	CONTROL TERRESTRE Ground Control	121.7
---------------------------------------	-------	------------------------------	-------	-------------------------------------	-------

<b>RNAV</b>	FINAL APCH CRS <b>326°</b>	MNM ALT ASASU <b>1900'</b>	DA/H ver mínimos DA/H refer to minimums	AD Elev. <b>187'</b> THR 33 Elev. <b>181'</b>	5500 FT MSA 25 NM RW33
-------------	-------------------------------	-------------------------------	--	--	---------------------------

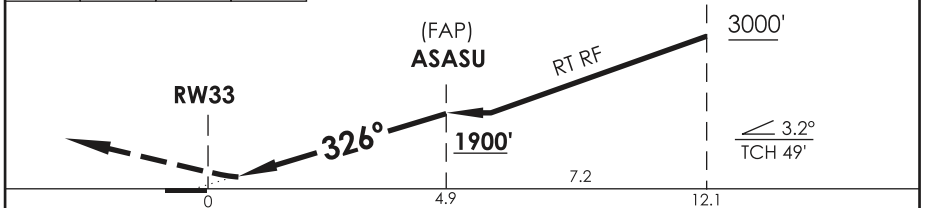
APCH FRUSTRADA: Ascenso en TR326° hacia JO060, continuar en TR321° hacia VURAS 3000', ingrese HLDG 143° izquierdo.

Missed Apch: Climb TR326° to JO060, continue climbing on TR321° to VURAS 3000', enter on HLDG 143° left.



**Nota / Note:**  
 - Segmentos Inicial, Intermedio y Frustrada;  
 - Initial, Intermediate and Missed APCH Segments:  
**RNP 1**

↑ TR326°	JO060	TR 321°	3000'	Nivel de Transición by ATC Transition Level by ATC	ALT MNM 3000'
----------	-------	---------	-------	---	---------------



C A T E G O R I A	DIRECTO RWY 33 Straight in RWY 33		<b>RNP AR RWY 33 SCJO:</b> Requiere RF. Para sistemas Baro VNAV no compensados proc NA bajo 0°C o sobre 38°C. Autorización requerida de acuerdo a DAN 06-22.  RF required. For uncompensated Baro VNAV systems procedure NA below 0°C or above 38°C. Authorization required according to DAN 06-22.
	RNP 0.15 DA <b>500'</b> (319')	RNP 0.30 DA <b>620'</b> (439')	
	A	1.6 Km	
B	1.6 Km	2.0 Km	
C			

Veloc. Terrestre Kts	80	100	120	140	160	<b>MNM ALTN RNP 0.30: VER PAG GEN 2.19</b> See pag 2.19 <b>RQR AUTORIZACIÓN ESPECIAL PARA ACFT Y CREW</b> SPECIAL ACFT AND AIRCREW AUTHORIZATION RQRD
Ángulo DES 3.2°	453'	566'	679'	793'	906'	
MAPt en DA						

DASA / SECCION AIS-MAP