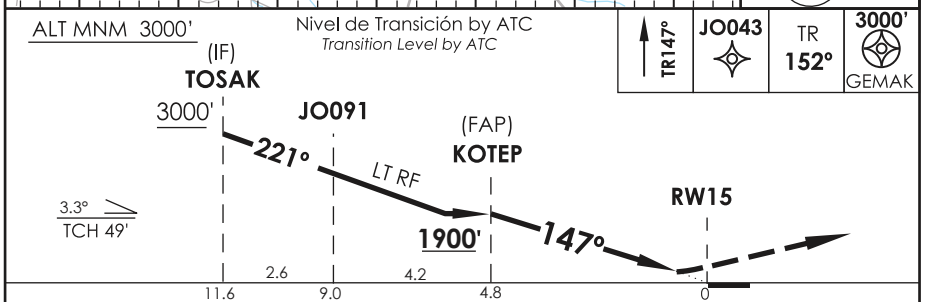
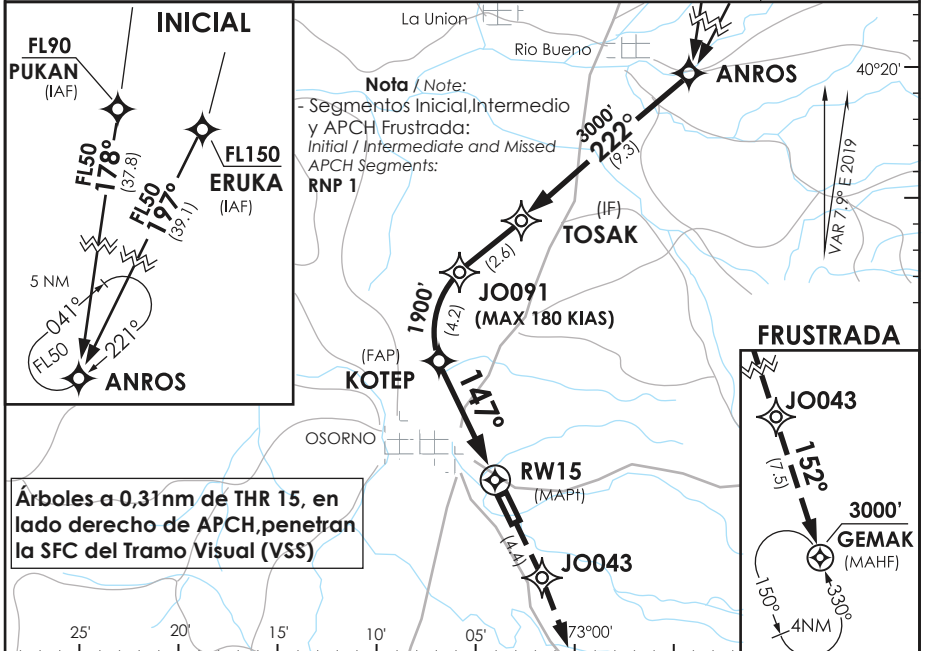


ACC PTO. MONIT Puerto Montt Center	121.3	TORRE OSORNO Osorno Tower	118.9	CONTROL TERRESTRE Ground Control	121.7
RNAV	FINAL APCH CRS 147°	MINM ALT KOTEP 1900'	DA (H) 580' (400')	AD Elev. 187' THR 15 Elev. 180'	5500 FT MSA 25 NM RW15
APCH FRUSTRADA: Ascenso en TR147° hacia JO043, continuar en TR152° hacia GEMAK 3000', ingrese HLDG 330° izquierdo. Missed Apch: Climb TR147° to JO043, continue climbing on TR152° to GEMAK 3000', enter on HLDG 330° left.					



CATEGORIA	DIRECTO RWY 15 Straight in RWY 15					RNP AR RWY 15 SCJO: Requiere RF. Para sistemas Baro VNAV no compensados proc NA bajo 0°C o sobre 38°C. Autorización requerida de acuerdo a DAN 06-22. RF required. For uncompensated Baro VNAV systems procedure NA below 0°C or above 38°C. Authorization required according to DAN 06-22.
	RNP 0.30 DA 580' (400')					
	A	1.6 Km				
B	2.0 Km					
C						
Veloc. Terrestre Kts	80	100	120	140	160	MNM ALTN RNP 0.30: VER PAG GEN 2.19 See pag 2.19 RQR AUTORIZACION ESPECIAL PARA ACFT Y CREW SPECIAL ACFT AND AIRCREW AUTHORIZATION RQRD
Ángulo DES 3,3°	467'	584'	701'	818'	934'	
MAPt en DA						

DASA / SECCION AIS-MAP