

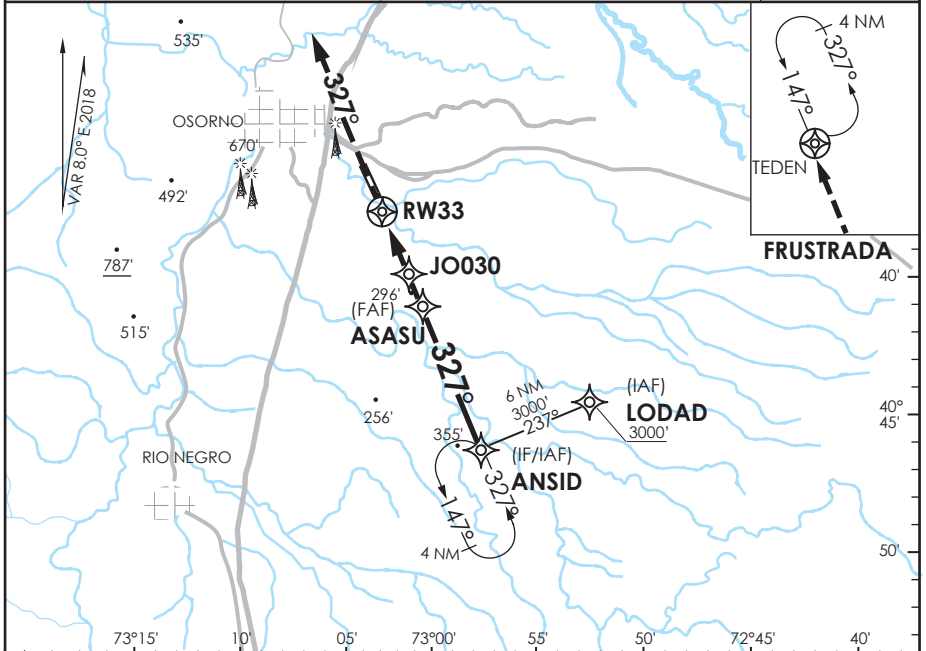
**OSORNO - CHILE**

**RNAV (GNSS) Y Rwy 33**

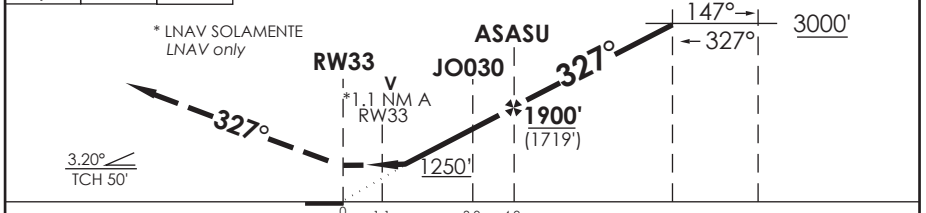
ACC PTO. MONTT Puerto Montt Center	121.3	TORRE OSORNO Osorno Tower	118.9	CONTROL TERRESTRE Ground Control	121.7
<b>RNAV</b>	FINAL APCH CRS <b>327</b>	MNM ALT ASASU <b>1900'</b>	LNAV/VNAV DA(H) <b>580'(399')</b>	AD Elev. <b>187'</b>	THR 33 Elev. <b>181'</b>

APCH FRUSTRADA: Ascenso 3000' directo TEDEN, ingrese a HLDG 147° izquierda o segun autorizacion ATC.  
 Missed Apch: Climb to 3000' direct to TEDEN, enter on HLDG 147° left or according ATC clearance.

5500 FT  
MSA 25 NM RWY33



3000' Nivel de Transición by ATC  
 Transition Level by ATC ALT MNM 3000'



C A T E G O R I A	DIRECTO RWY 33 <i>Straight in RWY 33</i>		CIRCULANDO <i>Circling</i>	ALTN <i>Alternate Minimums</i>
	LNAV/VNAV DA <b>580' (399')</b>	LNAV MDA <b>620' (439')</b>		
A	1.6 Km		780'	VER PAG. GEN 2.19
B			(593')	
C	2.0 Km		2.4 Km	

- Requiere aprobación RNP APCH. - RNP APCH approval RQRD.						Para sistemas Baro VNAV no compensados proc NA bajo -10°C o sobre 47°C. For uncompensated Baro VNAV systems procedure NA below -10°C or above 47°C.					
Veloc. Terrestre Kts	80	100	120	140	160						
Angulo DES 3,2°	453'	566'	679'	793'	906'						
MAPt en RW33											

DASA / SECCION AIS-MAP