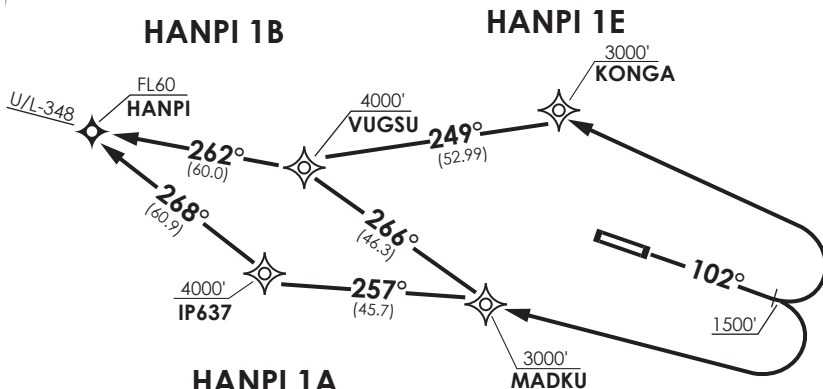


VAR 1° E 2020

**ISLA DE PASCUA**

GNDC 121.9  
 TWR 118.1  
 APP 127.3



**Notas**

1.- Requiere aprobación RNAV1 o RNP1.

2.-Requiere GNSS.

**Notes**

1.- RNAV1 or RNP1 approval required.

2.- GNSS required.

Altitud de Transición 10000Ft  
 Transition Altitude 10000Ft

No se ajusta a escala / Not to scale

**HANPI 1A / HANPI 1B / HANPI 1E RNAV Rwy10**

**HANPI 1A:** Ascienda en TR102° hasta 1500FT, viraje derecha directo a MADKU-IP637-HANPI para interceptar AWY U/L-348. Cruzar MADKU a 3000ft o superior, IP637 a 4000FT o superior, HANPI a FL60 o superior, luego según autorización ATC.

**HANPI 1A:** Climb on TR102° until 1500FT, turn right direct to MADKU-IP637-HANPI to intercept AWY U/L-348. Cross MADKU at or above 3000FT, IP637 at or above 4000FT, HANPI at or above FL60, then according to ATC clearance.

**HANPI 1B:** Ascienda en TR102° hasta 1500FT, viraje derecha directo a MADKU-VUGSU-HANPI para interceptar AWY U/L-348. Cruzar MADKU a 3000FT o superior, VUGSU a 4000FT o superior, HANPI a FL60 o superior.

**HANPI 1B:** Climb on TR102° until 1500FT, turn right direct to MADKU-VUGSU-HANPI to intercept AWY U/L-348. Cross MADKU at or above 3000FT, VUGSU at or above 4000FT, HANPI at or above FL60, then according to ATC clearance.

**HANPI 1E:** Ascienda en TR102° hasta 1500FT, viraje izquierdo directo a KONGA-VUGSU-HANPI para interceptar AWY U/L-348. Cruzar KONGA a 3000FT o superior, VUGSU a 4000FT o superior, HANPI a FL60 o superior.

**HANPI 1E:** Climb on TR102° until 1500FT, turn left direct to KONGA-VUGSU-HANPI to intercept AWY U/L-348. Cross KONGA at or above 3000FT, VUGSU at or above 4000FT, HANPI at or above FL60, then according to ATC clearance.