

AP. MATAVERI
ISLA DE PASCUA - CHILE

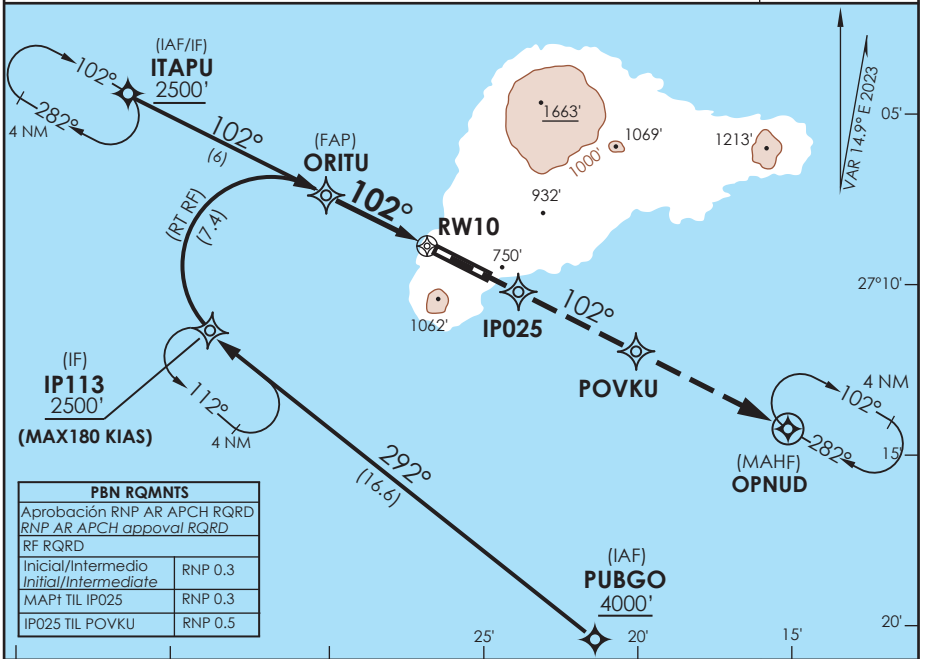
SCIP IAC 8
RNP X Rwy 10 (AR)

APP PASCUA Pascua Approach	127.3/118.1	TORRE PASCUA Pascua Tower	118.1	CONTROL TERRESTRE Ground Control	121.9
-------------------------------	-------------	------------------------------	-------	-------------------------------------	-------

RNP	FINAL APCH CRS 102°	MNM ALT ORITU 1300' (1173')	DA(H) 470' (343')	AD Elev. THR 10 Elev. 227'	127'
------------	-------------------------------	---------------------------------------	-----------------------------	--------------------------------------	-------------



APCH FRUSTRADA: ASC a 2500' vía IP025-POVKU-OPNUD, ingrese en HLDG 282° derecha o según autorización ATC.
 Missed Apch: Climb to 2500' via IP025-POVKU-OPNUD, enter HLDG 282° right or according to ATC clearance.

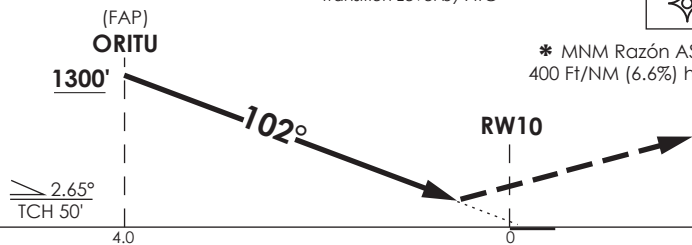


PBN RQMNTS	
Aprobación RNP AR APCH RQRD	
RNP AR APCH approval RQRD	
RF RQRD	
Inicial/Intermedia	RNP 0.3
Initial/Intermediate	RNP 0.3
MAP1 TIL IPO25	RNP 0.3
IP025 TIL POVKU	RNP 0.5

PAPI y GP RNAV no coincidentes.
 PAPI and RNAV GP not coincident.

Nivel de Transición por ATC
 Transition Level by ATC

IP025	POVKU	2500'
		OPNUD



* MNM Razón ASC MA:
 400 Ft/NM (6.6%) hasta 2000'

CATEGORÍA	DIRECTO RWY 10 Straight in RWY 10		RNP AR RWY 10 SCIP: PROC NA BLW 0°C ó ABV 54°C
	*RNP 0.3 DA 470' (343')		
	ALS	W/O ALS	
A	1.2 Km	1.6 Km	
B			
C			
D			

Veloc. Terrestre Kts						REQUIERE AUTORIZACIÓN ESPECIAL PARA ACFT Y TRIPULACIÓN SPECIAL ACFT AND AIRCREW AUTHORIZATION REQUIRED
----------------------	--	--	--	--	--	---

DASA / SECCION AIS-MAP