
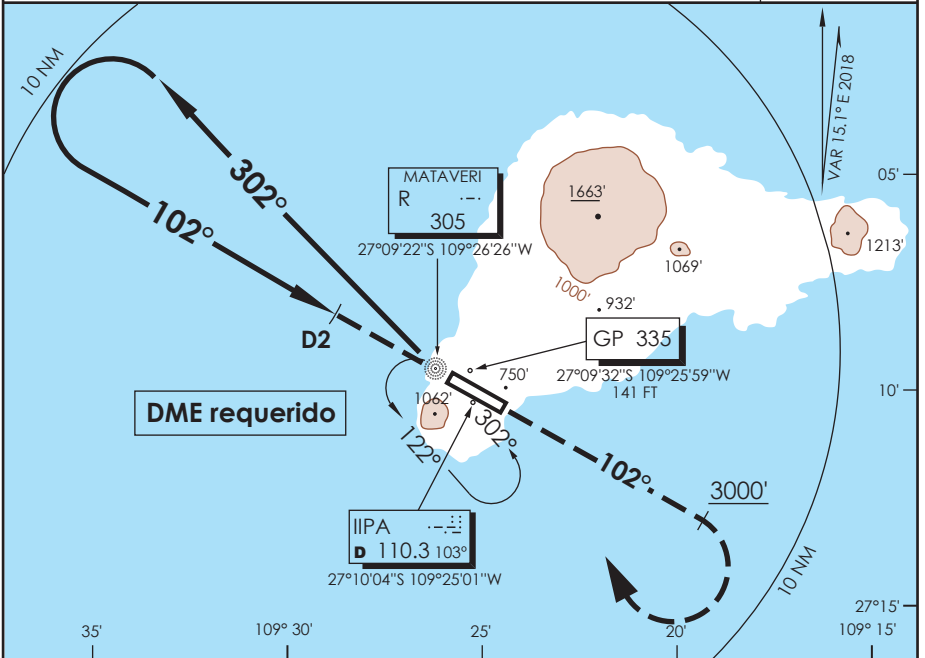


AP. MATAVERI ISLA DE PASCUA - CHILE

SCIP IAC 7
NDB Z Rwy 10

APP PASCUA Pascua Approach		127.3/118.1	TORRE PASCUA Pascua Tower		118.1	CONTROL TERRESTRE Ground Control		121.9
L "R" 305	FINAL APCH CRS 102°	WO FAF		MDA(H) 700' (573')	AD Elev. 227'	THR 10 Elev. 127'		 MSA 25 NM IPA
APCH FRUSTRADA: Ascenso a 3000' HDG 102° L "R", viraje derecha directo a L "R", ingrese en HLDG 302° izquierda según autorización ATC. Missed Apch: Climb to 3000' on HDG 102° "R" L, turn right direct to "R" L, enter HLDG 302° left then according to ATC clearance.								



ALT MNM 3000'	Nivel de Transición by ATC Transition Level by ATC	3000'	HDG 102°	RT	R 305

CATEGORIA	DIRECTO RWY 10 Straight in RWY 10		CIRCULANDO Circling	ALTN Alternate Minimums
	MDA 700' (573')			
	SSALF	WO SSALF	NA	VER PAG. GEN 2.19
A	1.6 Km	2.0 Km		
B	1.6 Km	2.0 Km		
C	2.4 Km	2.8 Km		
D	2.4 Km	2.8 Km		