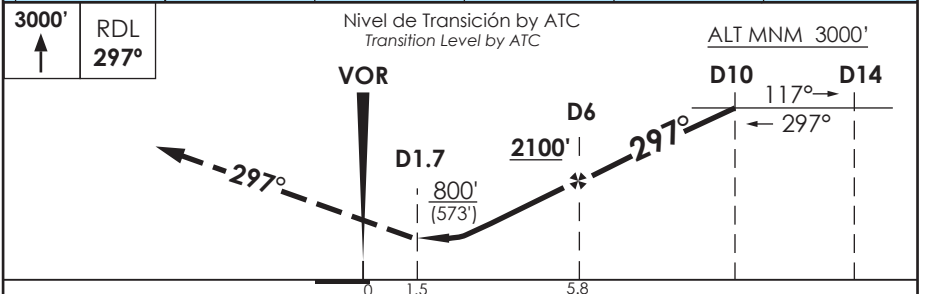
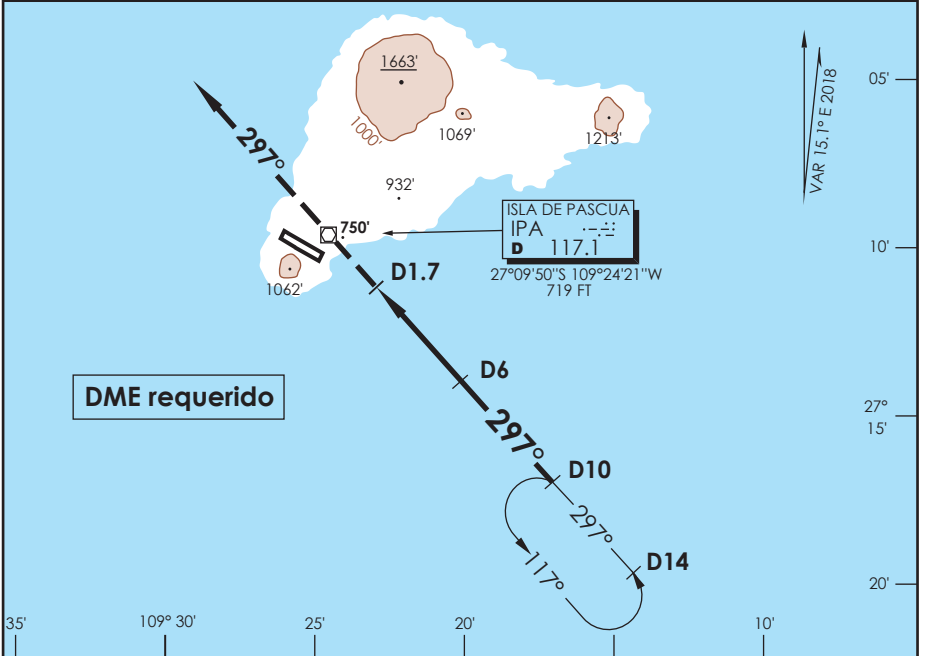


AP. MATAVERI ISLA DE PASCUA - CHILE

SCIP IAC 6
VOR Y Rwy 28

APP PASCUA Pascua Approach		127.3/118.1	TORRE PASCUA Pascua Tower		118.1	CONTROL TERRESTRE Ground Control		121.9
VOR IPA 117.1	FINAL APCH CRS 297°	MNM ALT D 6.0 2100'	MDA(H) 800' (573')	AD Elev. 227'	THR 28 Elev. 227'	<div style="border: 1px solid black; border-radius: 50%; width: 100px; height: 100px; display: flex; align-items: center; justify-content: center;"> 3000 FT </div> <p>MSA 25 NM IPA</p>		
<p>APCH FRUSTRADA: Ascenso a 3000' via R297, luego según autorización ATC.</p> <p>Missed Apch: Climb to 3000' on R297, then according to ATC clearance.</p>								



Categoría	DIRECTO RWY 28 <i>Straight in RWY 28</i>		CIRCULANDO <i>Circling</i>	ALTN <i>Alternate Minimums</i>
	MDA 800' (573')			
A	1.6 Km		NA	VER PAG. GEN 2.19
B				
C	2.8 Km			
D				

CTN: VOR/DME INSTALADO SOBRE TERRENO ALTO, ELEV TOTAL 750 FT					PROC DESALINEADO 15° RESPECTO A RCL				
CTN: VOR/DME installed over high terrain, total elevation 750 FT					PROC offset 15° with respect to RCL				
Veloc. Terrestre Kts	80	100	120	140	160				
Angulo DES 2.96° FPM	419'	524'	628'	733'	838'				
Dist. FAF a MAPT 4.3 NM	3:14	2:35	2:09	1:51	1:37				